

# INTRODUCTION

# GTG1205: LED BULKHEAD LIGHT

## FEATURE

Durable Optimized LED Lighting  
 Skilled Manufacturing Technology  
 Long Lifespan >50,000hours  
 Working Temperature: -30°C~50°C

## MAIN MATERIAL

LED Brand: GUBO  
 Driver Brand: GUBO  
 Housing: Die-casted Aluminum  
 Diffuser: Anti-UV Opal PC Diffuser

## INSTALLATION

Surface Mounted: Ceiling, Wall, Pillar-top  
 Suitable for Architecture Illumination, Like Balcony, Veranda, External Wall...

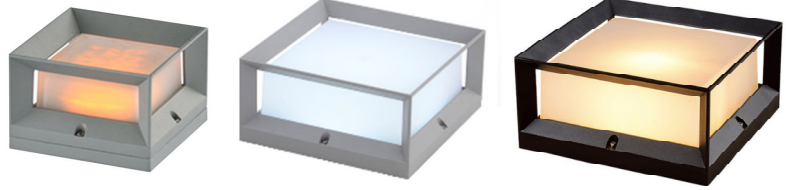
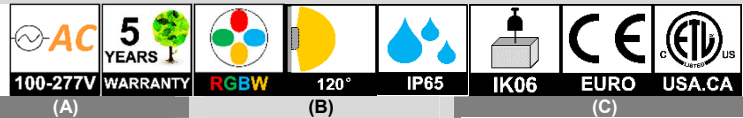
## STANDARD

Designed and Manufactured to Comply with  
 TUV/CB/CE/RoHS/SAA/Erp/cETL/FCC  
 IP65 Protection, Class I Electrical

## OPTION

LED CCT: 1,800K~10,000K/R/G/B/Y  
 [CRI]: [E] RA80, [G] RA90, [H] RA97  
 [MBJ]: JBOX Mounting Kit  
 [CBE] Emergency: 90min 5W  
 [CSL]: Photocell Lux Sensor  
 [CSMD]: Dimmable Microwave Motion Sensor  
 Custom Housing Finish: Colors by RAL Code

WHITE	BLACK	GREY	DARK GREY	BRASS
RAL9010P	RAL9005P	RAL7042P	RAL7016P	RAL1024P



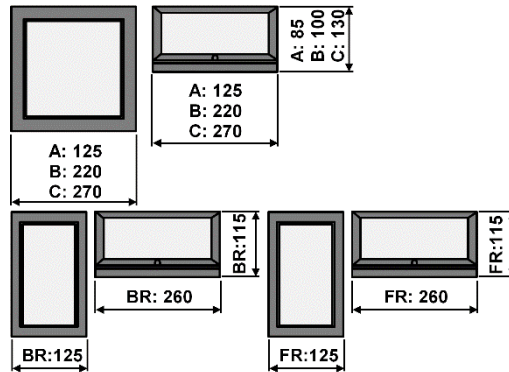
(BR)

(FR): Bilayer Diffuser



## CASE STUDY

DIMENSION: [UNIT: MM]



MODEL	POWER [W]	LED TYPE	CCT [K]	CRI	FLUX [LM]	POWER FACTOR	BEAM ANGLE	OPTIONAL DIMMING	INPUT [V]
+GTG1205A	+6W	24x0.5W SMD2835	G2000K	RA90	400	>0.9	120°	*CDT: TRIAC(10%) [CDV]: 0/1~10V(8%) *CDV0: 0~10V(1%) [CDV1]: 1~10V(15%) [CDX]: DMX512(1%) [CDA]: DALI(1%) [CDZ]: ZIGBEE(1%) +CRF: 2.4G RF (1%) +CDP: PWM(1%) [CSL]: Lux Sensor +CSMD: Dim Sensor	*AC100~277V [AC220~240V] [AC110~130V] [AC100~240V] [AC100~347V] 50/60Hz [ CV DC12V ] [+CV DC24V ] [ CV DC36V ] [ CV DC48V ]
			G2700K	RA90	500				
			G3000K	RA90	530				
			G3500K	RA90	530				
			G4000K	RA90	570				
			G5000K	RA90	570				
			G6000K	RA90	570				
+2C@6W	TWG	G2700K G6000K	RA90	360	>0.6				
3C@6W	RGB	620nm 520nm 460nm	\	220	>0.5				
+4C@6W	RGBWG	620nm 520nm 460nm G2700K	\	360	>0.5				
5C@6W	RGBTWG	620nm 520nm 460nm G2700K G6000K	\	360	>0.5				
**GTG1205B **GTG1205BR **GTG1205FR	**15W [10W]	96x0.5W SMD2835	G2000K	RA90	920	>0.9	120°	*CDT: TRIAC(10%) [CDV]: 0/1~10V(8%) *CDV0: 0~10V(1%) [CDV1]: 1~10V(15%) [CDX]: DMX512(1%) [CDA]: DALI(1%) [CDZ]: ZIGBEE(1%) +CRF: 2.4G RF (1%) +CDP: PWM(1%) [CSL]: Lux Sensor +CSMD: Dim Sensor	*AC100~277V [AC220~240V] [AC110~130V] [AC100~240V] [AC100~347V] 50/60Hz [ CV DC12V ] [+CV DC24V ] [ CV DC36V ] [ CV DC48V ]
			G2700K	RA90	1160				
			G3000K	RA90	1230				
			G3500K	RA90	1230				
			G4000K	RA90	1330				
			G5000K	RA90	1330				
			G6000K	RA90	1330				
+2C@15W	TWG	G2700K G6000K	RA90	1080	>0.6				
3C@15W	RGB	620nm 520nm 460nm	\	660	>0.5				
+4C@15W	RGBWG	620nm 520nm 460nm G2700K	\	1080	>0.5				
5C@15W	RGBTWG	620nm 520nm 460nm G2700K G6000K	\	1080	>0.5				
**GTG1205C	**30W [24W] **20W [15W]	120x0.5W SMD2835	G2000K	RA90	1900	>0.9	120°	*CDT: TRIAC(10%) [CDV]: 0/1~10V(8%) *CDV0: 0~10V(1%) [CDV1]: 1~10V(15%) [CDX]: DMX512(1%) [CDA]: DALI(1%) [CDZ]: ZIGBEE(1%) +CRF: 2.4G RF (1%) +CDP: PWM(1%) [CSL]: Lux Sensor +CSMD: Dim Sensor	*AC100~277V [AC220~240V] [AC110~130V] [AC100~240V] [AC100~347V] 50/60Hz [ CV DC12V ] [+CV DC24V ] [ CV DC36V ] [ CV DC48V ]
			G2700K	RA90	2370				
			G3000K	RA90	2480				
			G3500K	RA90	2480				
			G4000K	RA90	2610				
			G5000K	RA90	2610				
			G6000K	RA90	2610				
+2C@30W	TWG	G2700K G6000K	RA90	2250	>0.6				
3C@30W	RGB	620nm 520nm 460nm	\	1380	>0.5				
+4C@30W	RGBWG	620nm 520nm 460nm G2700K	\	2250	>0.5				
5C@30W	RGBTWG	620nm 520nm 460nm G2700K G6000K	\	2250	>0.5				

## NOTE:

All parameters are measured at 25°C ambient temperature, 35% humidity experimental environment.  
 Tolerances of power and luminous flux are ±10%, tolerance of color rendering index is ±5.