



The post top provides a unique, scalable lighting solution targeted for 8' to 20' mounting heights. Its design brings proportion to parking lots, drive lanes, entrances, building perimeters and pathways. The excellent optical design that deliver the smooth light with a very good uniformity. The structure is clean and more popular, promotes harmony between the outdoor lighting and architecture.

## SPECIFICATION FEATURES

### Construction

- Rugged die-cast aluminum housing secures the thermally conductive LED panel and electrical cha.
- Show off urban style by the simple shape and the solid material.
- Housing is completely sealed against moisture and environmental contaminants.

### Optics

- Single CCT 4000K and 5000K are available for standard version, and the 130W offer the color tunable version, the CCT can be changed to 3000K/4000K/5000K.
- Scalable Lumen Packages from 5,400 to 17,200 Lumens.
- High performance UV stabilized optical grade polymer optic lenses to achieve desired distribution optimized to get target lumens and a superior lighting uniformity.
- The optics can conform to dark sky requirement.

### Electrical

- Universal 120-277 VAC or 347-480 VAC input voltage.
- Standard with 0-10V dimming allowing for 10% to 100% dimming.
- The 130W optional for 4 positions wattage regulation: 130W, 87W, 70W, 45W.
- THD:  $\leq 20\%$
- Power Factor:  $\geq 90\%$

### Controls

- Optional occupancy sensor.
- Optional Photocell.

### Ambient Temperature

- Ambient operating temperature  $-40^{\circ}\text{C}$  to  $45^{\circ}\text{C}$  ( $-40^{\circ}\text{F}$  to  $113^{\circ}\text{F}$ ).

### Lifespan

- Estimated 100,000-hour LED lifespan based on IES LM-80 results and TM-21 calculations.

### Warranty

- Five-year warranty.

### Certifications

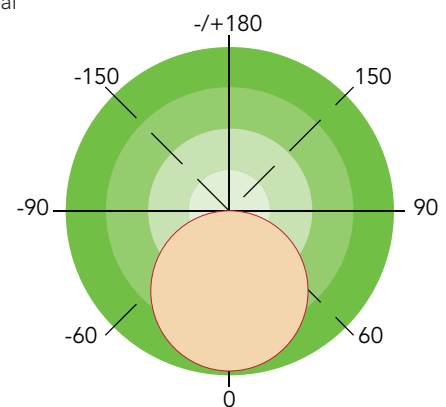
- UL cUL wet location listed.
- DesignLights Consortium™ Qualified.

Note: Please refer to the DLC website for specific product qualifications at [www.designlights.org](http://www.designlights.org).



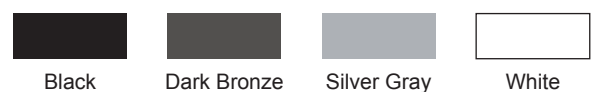
## PHOTOMETRICS

General



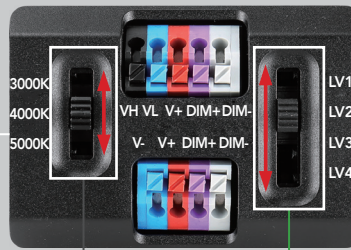
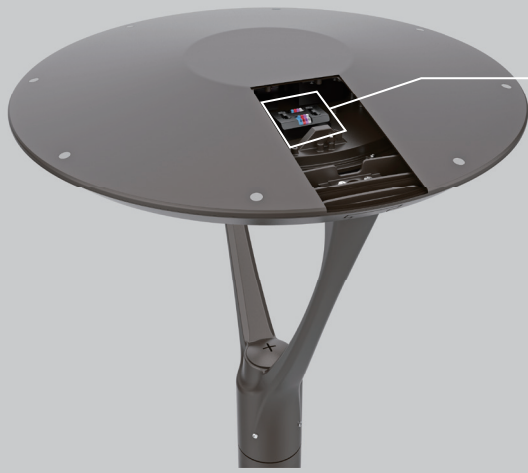
### Finish

- It's available in black or optional dark bronze, silver gray or white.



### Note

- Actual performance may differ as a result of end-user environment and application. All values are design or typical values, measured under laboratory conditions at  $25^{\circ}\text{C}(\pm 5^{\circ}\text{C})$  specifications subject to change without notice.



### CCT AND WATTAGE SELECTABLE

This fixture has the function of adjusting the lumens output and color temperature on-site.

**CCT SELECT**

3000K 4000K 5000K

Offer three CCT adjustable (3000K, 4000K, 5000K).

**WATTAGE SELECT**

45W 70W 87W 130W

Each model supports 4 positions wattage regulation : 130W, 87W, 70W, 45W

### DIMENSION

unit: inch/mm

Net weight:  
130W: 25.699lbs

**Pole Sleeve**

$\Phi 75\text{mm} \pm 0.5\text{mm}$   
 $\Phi 61.5\text{mm} - 0.2\text{mm}$   
120mm  $\pm$  1mm

$\Phi 640\text{mm} (\Phi 25.2\text{in})$   
70mm (2.8in)  
616mm (24.3in)  
100.4mm (4.0in) 20mm (0.8in)

### EPA OF POST TOP

Item	
EPA	0.9696

### PERFORMANCE DATA (@ Single CCT)

SYSTEM WATTS	VOLTAGE	CRI	LUMENS 3000K	LPW 3000K	LUMENS 4000K	LPW 4000K	LUMENS 5000K	LPW 5000K
45W	120-277VAC	70	5400lm	120 lm/W	5450lm	121 lm/W	5500lm	122 lm/W
70W	120-277VAC	70	8400lm	120 lm/W	8450lm	121 lm/W	8500lm	121 lm/W
87W	120-277VAC	70	10500lm	121 lm/W	10600lm	122 lm/W	10600lm	122 lm/W
130W	120-277VAC	70	16000lm	123 lm/W	16300lm	125 lm/W	16300lm	125 lm/W

### ADJUSTABLE LUMEN OUTPUT TABLE

SWITCH SETTING	SETTING WATTS	VOLTAGE	CRI	LUMENS 3000K	LPW 3000K	LUMENS 4000K	LPW 4000K	LUMENS 5000K	LPW 5000K
LV1	130W	120-277VAC	70	16000lm	123 lm/W	17200lm	132 lm/W	16300lm	125 lm/W
LV2	87W	120-277VAC	70	11600lm	133 lm/W	12000lm	138 lm/W	11800lm	136 lm/W
LV3	70W	120-277VAC	70	9700lm	139 lm/W	10000lm	143 lm/W	9900lm	141 lm/W
LV4	45W	120-277VAC	70	6500lm	144 lm/W	6700lm	149 lm/W	6600lm	147 lm/W

## ELECTRICAL DATA

NUMBER OF DRIVERS	DRIVER CURRENT (mA)	NOMINAL POWER (W)	INPUT VOLTAGE (V)	CURRENT (Amps)
1	1120	45	120	0.38
		45	208	0.22
		45	240	0.19
		45	277	0.16
1	1750	70	120	0.58
		70	208	0.34
		70	240	0.29
		70	277	0.25
2	2240	87	120	0.73
		87	208	0.42
		87	240	0.36
		87	277	0.31
2	3500	130	120	1.08
		130	208	0.63
		130	240	0.54
		130	277	0.47

## ACCESSORIES (Optional)

	<p><b>PIR Motion Sensor, 120-277V</b> USE: Sensor can be pre-installed in factory or field installed.</p>		<p><b>Photocell - 120V-277V 347V/480V</b> USE: Photocell is field installed.</p>
---	---	--	--

## ORDERING GUIDE Example: FINN 1-130W-27V-D-(Photocell option)-(Sensor option)

Fixture Type	Power Consumption	Voltage	CCT	Finish	Photocell (Option)	Sensor (Option)	Photometry	Internal Code
<input type="checkbox"/>	<input type="checkbox"/>	<input type="checkbox"/>	<input type="checkbox"/>	<input type="checkbox"/>	<input type="checkbox"/>	<input type="checkbox"/>	<input type="checkbox"/>	<input type="checkbox"/>
<b>FINN 1</b> Post Top Light	45W 70W 87W 130W	27V 120-277V	<b>DDK</b> Adjustable color temperature 40K 4000K 50K 5000K	<b>D</b> Dark Bronze <b>B</b> Black <b>W</b> White	<b>P0</b> 120-277V Photocell <b>Blank</b> Without Photocell	<b>M</b> With Motion Sensor <b>Blank</b> Without Sensor	<b>Blank</b> General Photometry	<b>Blank</b> <b>Alphanumeric</b>

Note: Only 130W optional for DDK.

We try to keep the highlighted above in US stock