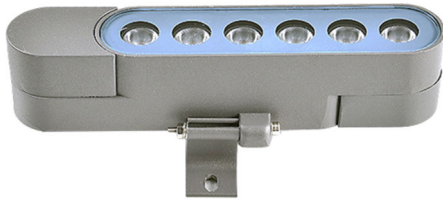


GTE6605A:MODULAR CHAIN LED PROJECTOR LIGHT

(MA166MA)				BACKVIEW			

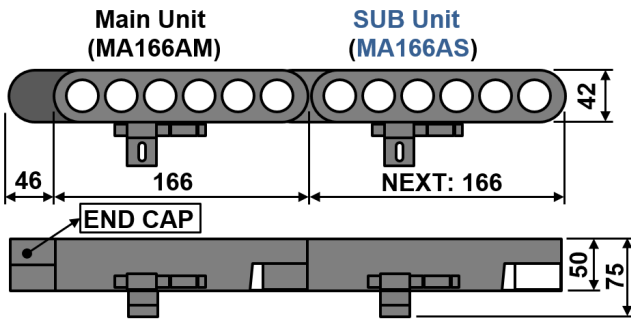


STRAIGHT LINEAR

BENDABLE



DIMENSION: [UNIT: MM]



INTRODUCTION

FEATURE

Optimized Professional Architecture Lighting
 Modular Structure For Various Installation Location
 Long Lifespan Design >50,000hours
 Working Temperature: -30°C~50°C

MAIN MATERIAL

LED Brand: GUBO
 Driver Brand: GUBO
 Housing: Die-casted Aluminum Radiator
 Optics: High Efficiency PC Lens
 Diffuser: Clear Tempered Glass Diffuser

INSTALLATION

Suitable for Exterior Illumination, Like Architecture.....
 [FBA]: Adjustable Mounting Bracket
 [FBS]: Ground Spike

NOTES: Custom Installation and Accessories Referred to Another Catalogue of Fixing Kits.

STANDARD

Designed and Manufactured to Comply with CE/RoHS/CB/cETL/SAA/SASO Standard
 IP67 Protection, Class III Electric

CUSTOM OPTION

LED CCT: 1,800K~10,000K/R/G/B/Y
 LED Grown Light: **Full Spectrum** 380nm~840nm
 [CRI]: [E] Ra80, [G] Ra90, [H] Ra97
 [NEST]: Rattan Nest
 [PCW-FM]: Female&Male Waterproof Connector
 [SFH] Custom Housing Finish by RAL Code

WHITE	BLACK	GREY	DARK GREY	BRASS
RAL9010P	RAL9005P	RAL7042P	RAL7016P	RAL1024P

CASE STUDY



MODEL	Parameter of Only One Modular MQ1S					POWER FACTOR	BEAM ANGLE	CUSTOM DRIVER	INPUT [V]
	POWER [W]	LED TYPE	CCT [K]	CRI	FLUX [LM]				
GTE6605A-MA166AM MA166AS	6W	6x2W SMD3030	G2700K	RA90	450	> 0.9	[Symmetric] BL15D:15° BL25D:25° BL30D:30° BL45D:45° BL60D:60° BL90D:90° BL120D:120°	[CDP]:PWM(1%)	DC24V [DC12V] [DC42V]
			G3000K	RA90	490				
			G3500K	RA90	490				
			G4000K	RA90	520				
			G5000K	RA90	520				
	9W	6x2W SMD3030	G2700K	RA90	680	> 0.9	[Oval] BLV15x45° BLV15x60°	[CDT]:TRIAC(10%) [CDV]:0~10V(8%) [CDV0]:0~10V(1%) [CDV1]:1~10V(10%) [CDX]:DMX512(1%) [CDA]:DALI(1%) [CDS]:SPI(1%) [CRZ]:ZIGBEE(1%) [CRF]:2.4G RF(1%) [CRB]:Bluetooth(1%)	Following by Remote Driver
			G3000K	RA90	730				
			G3500K	RA90	730				
			G4000K	RA90	780				
			G5000K	RA90	780				
	2C@6W	TWG	G2700K	G6500K	RA90	320	> 0.9	[BDM] BDM:120°	[BGL] LM-25% Louver
			G3000K	RA90	730				
			G3500K	RA90	730				
3C@6W	RGB	620nm 520nm 460nm	\	320	> 0.9				
4C@6W	RGBW	620nm 520nm 460nm G2700K	\						
4C@6W	RGBA	620nm 520nm 460nm 590nm	\						

NOTE:

All parameters are measured at 25°C ambient temperature, 35% humidity experimental environment.
 Tolerances of power and luminous flux are ±10%, tolerance of color rendering index is ±5.