

CIP-SR6C/W/P-G2 Series

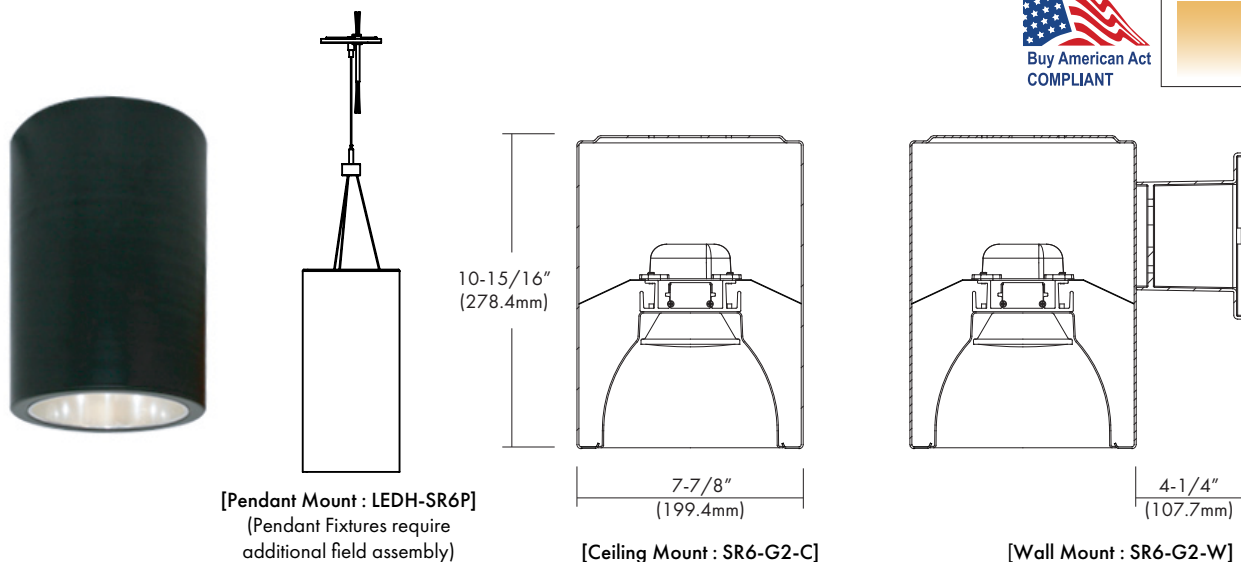
120-277 VAC, 6" LED Ceiling, Wall and Pendant Mount Cylinders



6" LED Cylinder



Dimmable



DESCRIPTION

The CIP-SR6-G2 Series 6" Surface Mount Cylinders come in three versions: Ceiling "C", Wall "W" and Pendant "P". The fixtures are offered in 10W, 14W, 22W, and 30W LED, COB modules plus State-of-the-Art universal drivers with Triac, ELV or 0-10V dimming.

DESIGN FEATURES

LED Module

- Durable extruded aluminum heat sink is integrated with the LED COB (chip on board).
- Inner reflector enables even distribution with excellent uniformity.

Reflector

- Anodized haze clear and White painted finishes. Optional Baffle style reflectors are also available. Contact factory for other finishes.

Housing

- Round, 0.60" thick spun aluminum housing available in semi-matte White, Black, Bronze and Silver.

Heat Sink

- Extruded Aluminum Heat Sink computer designed for superior thermal management to ensure constant light output, color and life of solid state engine components.

LED Power Supply Driver

- Universal, 120~277 VAC input, high efficiency dimming drivers with ① Triac/ELV dimmer switches or ② Triac/ELV/0-10V dimmer switches.
- Drivers feature power factor >.90, THD <20% with integral thermal protection to sense over temperature or electrical issues.
- Driver mounts externally to the LED module for thermal isolation and allows for easy maintenance if needed.
- Optional Lutron Hi-lume 1%, LED drivers are available. Lutron drivers provide flicker-free, smooth, continuous dimming down to 1%. (Contact factory for dimming system requirements)

Wall Bracket (SR6-G2-W)

- Cast aluminum bracket easily secures to housing's cross-bar with set screws.

Pendant Kit

- Pendant Fixtures require additional field assembly.

Limited Warranty

- LED Module & Product: 3 years

Listing

- cCSAus

SPECIFICATION				
Input Voltage	120-277VAC			
Wattage (+/-5%)	10W	14W	22W	30W
Lumen (+/-5%)	1,000 lm	1,400 lm	2,200 lm	3,000 lm
Efficacy (LPW)	100 lm/W	100 lm/W	100 lm/W	100 lm/W
Beam Angle	67.7°	75°	75.5°	77°
CRI (Typical)	80, 90			
CCT (Color +/-5%)	2700K, 3000K, 3500K, 4000K			
Dimming	Triac/ELV/0~10V/LUTRON			
Environment	Indoor/Outdoor (Ceiling Mount)			

Triac/ELV/0-10V Approved Dimmers

* Lutron:

Triac: Skylark S-600
ELV: NovaT NTELV-300 & 600
Diva DVELV-300P & 303P
Maestro MAELV-600
Skylark SEL-VB-300P
0-10V: Diva DDTV
Diva DVSTV-IV
CFL/LED: Diva DVCL-253P
Ariadni AYCL-253P

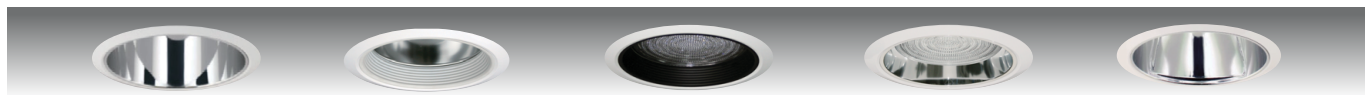
* Leviton:

Triac: Trimatron #705W
ELV: IPE04-1L (ELV)
Acenti: ATE06-1LW

* Consult tech. service or factory for additional dimmers

TRIMS

* Wide beam reflector is standard. Also available in narrow beam in reflector (consult with factory).



TR-R64
Specular Open Reflector

TR-R614
Baffle w / Reflector

TR-R641
Baffle w /
Regressed Lens

TR-R622
Reflector w /
Regressed Lens

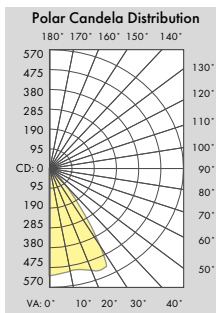
TR-R636
Wall Wash w /
Reflector Plate

* All trims are rated for damp location and regressed lens trims are wet location listed.

* TR-R641 & TR-R622 are suitable and rated for shower location.

PHOTOMETRIC REPORT

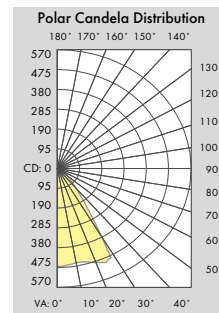
* Contact Factory for IES File



Illuminance at a Distance

Center Beam FC	Beam Width
138.2 fc	3.0 ft
34.6 fc	6.0 ft
15.4 fc	9.0 ft
8.6 fc	12.0 ft
5.5 fc	15.0 ft
3.8 fc	18.0 ft

Beam Spread: 75°



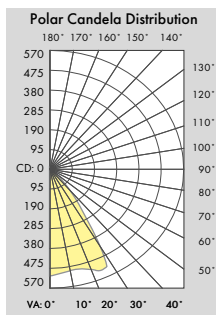
Illuminance at a Distance

Center Beam FC	Beam Width
244.2 fc	3.0 ft
61.0 fc	6.1 ft
27.1 fc	9.1 ft
15.3 fc	12.2 ft
9.8 fc	15.2 ft
6.8 fc	18.2 ft

Beam Spread: 75°

SR6C/SR6W/SR6P-14

SR6C/SR6W/SR6P-22



Illuminance at a Distance

Center Beam FC	Beam Width
316.1 fc	2.4 ft
79.0 fc	4.9 ft
35.1 fc	7.3 ft
19.8 fc	9.8 ft
12.6 fc	12.2 ft
8.8 fc	14.7 ft

Beam Spread: 75°

SR6C/SR6W/SR6P-30

Ordering Information

Model	Pendant Style/Length	Watts	CRI	Color Temp. *	Driver	Housing Finish *	Trim	Reflector Finish **	Baffle Finish for LEDT-R614 & R641	Reflector Collar for LEDT-R622	Lens for LEDT-R641 & R622
CIP-SR6C-G2 (Ceiling Mount)	Place Style <i>before</i> Length - = Standard Pendant -S = Swivel Mount Pendant	-10 = 10W (UZTD & UTMD Driver Only)	-8 = 80 CRI -9 = 90 CRI	27 = 2700K 30 = 3000K 35 = 3500K 40 = 4000K	UTD = 120-277VAC, Triac/ ELV Dimming (14, 22 & 30W Only) UZTD = 0-10V Dimming (10, 14, 22 & 30W) UTMD = 120-277VAC, Tri- Mode (0-10V/ Triac/ELV) Dimming (10, 14, & 22W Only) LDE1 = CLUTRON Hi-lume 1% EcoSystem FadeToBlack PEQ01 = CLUTRON Hi-lume Premier 0.1% EcoSystem FadeToBlack (For 23W or less only)	-WH = White -BK = Black -BZ = Bronze -SI = Silver	TR-R64 TR-R614 TR-R641 TR-R622 TR-R636	-HC = Haze Clear -WH = White Painted	-WH = White -BK = Black	-CL = Clear	-FR = Fresnel
CIP-SR6W-G2 (Wall Mount)	Pendant Lengths 12 = 12 Inches 18 = 18 Inches 24 = 24 Inches 36 = 36 Inches 48 = 48 Inches	-14 = 14W -22 = 22W -30 = 30W									
CIP-SR6P-G2 (Pendant Mount)	Cable and Cord Lengths -C32 = 32 Inches -C58 = 58 Inches -C108 = 108 Inches -C128 = 128 Inches										

Example : CIP-SR6-G2-P-24-23-80UZTD-WH

TR-R64-HC

* Consult factory for other Color Temperatures and Finishes