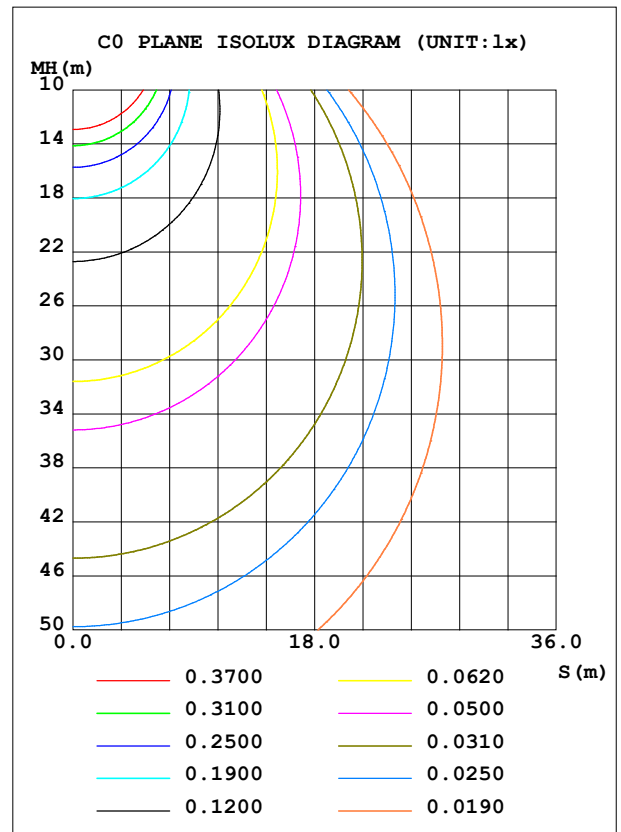
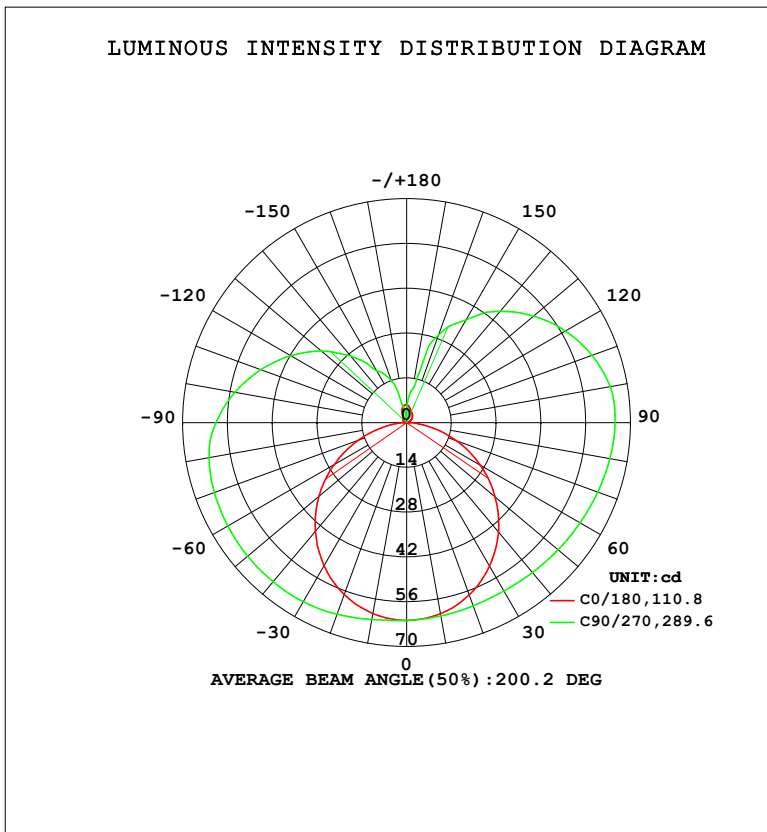


LUMINAIRE PHOTOMETRIC TEST REPORT

NAME: R25	TYPE:	WEIGHT:
SPEC.:	DIM.:	SERIAL No.:
MFR.:	SUR.: 0.025*1	Shielding Angle:

DATA OF LAMP		PHOTOMETRIC DATA				Eff: 48.22 lm/W
MODEL	4000K 10W	Imax (cd)	65.20	S/MH (C0/180)	1.24	
NOMINAL POWER (W)	10	LOR (%)	100.0	S/MH (C90/270)	1.60	
RATED VOLTAGE (V)	24	TOTAL FLUX (lm)	469.46	<input type="checkbox"/> UP, DN (C0-180)	21.4, 31.4	
NOMINAL FLUX (lm)	469.463	CIE CLASS	SEMI-D.	<input type="checkbox"/> UP, DN (C180-360)	15.1, 32.1	
LAMPS INSIDE	1	<input type="checkbox"/> up (%)	36.5	CIBSE SHR NOM	1.50	
TEST VOLTAGE (V)	24	<input type="checkbox"/> down (%)	63.5	CIBSE SHR MAX	1.55	



C Range: 0 - 360DEG
 C Interval: 22.5DEG
 Test Speed: HIGH
 Temperature: 25.3DEG
 Operators:
 Test Date: 2021-12-03

Range: 0 - 180DEG
 Interval: 2.0DEG
 Test System: EVERFINE GO-2000B_V1 SYSTEM V2.00.450
 Humidity: 65.0%
 Test Distance: 5.749m [K=1.0000]
 Remarks:

ZONAL FLUX DIAGRAM

ZONAL FLUX DIAGRAM:

°	C0	C45	C90	C135	C180	C225	C270	C315	°	□ zone	□ total	%lum, lamp
10	60.67	60.88	61.38	60.91	60.62	61.60	62.49	61.75	0- 10	5.875	5.875	1.25,1.25
20	57.27	58.86	60.93	58.95	57.15	60.62	63.74	60.99	10- 20	17.16	23.04	4.91,4.91
30	51.84	55.94	60.74	56.10	51.64	58.69	64.63	59.28	20- 30	27.12	50.15	10.7,10.7
40	44.67	52.62	61.19	52.71	44.39	55.78	64.98	56.40	30- 40	35.00	85.16	18.1,18.1
50	36.14	49.34	61.83	49.50	35.79	52.19	64.94	52.92	40- 50	40.43	125.6	26.8,26.8
60	26.62	46.29	62.61	46.68	26.21	48.38	64.59	49.31	50- 60	43.35	168.9	36,36
70	16.58	43.99	63.54	44.61	16.11	44.86	63.97	45.93	60- 70	44.12	213.1	45.4,45.4
80	7.000	42.56	64.49	43.52	6.502	41.87	62.72	42.91	70- 80	43.35	256.4	54.6,54.6
90	1.044	42.28	65.17	43.30	0.7950	38.83	59.64	39.49	80- 90	41.68	298.1	63.5,63.5
100	0.4322	42.00	64.62	43.17	0.5442	34.39	54.56	35.10	90-100	39.46	337.6	71.9,71.9
110	0.7310	40.59	61.67	40.25	0.8202	28.70	48.54	30.71	100-110	35.78	373.3	79.5,79.5
120	1.531	38.63	57.33	35.34	1.295	23.22	41.91	26.46	110-120	30.68	404.0	86.1,86.1
130	2.344	36.11	51.87	28.85	1.647	17.89	34.95	22.37	120-130	24.53	428.5	91.3,91.3
140	2.926	33.01	45.48	23.92	1.989	13.61	27.17	18.32	130-140	18.07	446.6	95.1,95.1
150	3.434	28.98	37.10	18.61	2.580	9.652	18.51	13.81	140-150	11.98	458.6	97.7,97.7
160	4.023	23.03	29.26	14.72	4.282	7.111	13.84	10.12	150-160	6.969	465.6	99.2,99.2
170	5.030	18.02	10.67	15.59	5.400	3.857	4.156	3.165	160-170	3.150	468.7	99.8,99.8
180	5.692	6.170	3.532	10.81	5.715	6.177	3.503	10.70	170-180	0.7466	469.5	100,100
DEG	LUMINOUS INTENSITY:cd									UNIT:lm		

Conical surface Flux(90deg): 108.93 lm

%lum = 23.2%

%lamp = 23.2%

Conical surface Flux(120deg): 168.94 lm

%lum = 36.0%

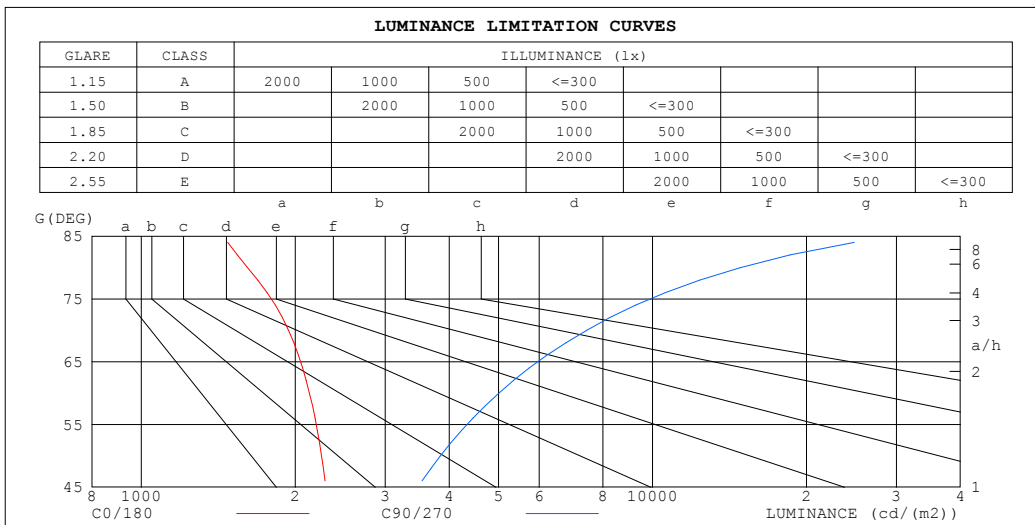
%lamp = 36.0%

C Range: 0 - 360DEG
 C Interval: 22.5DEG
 Test Speed: HIGH
 Temperature:25.3DEG
 Operators:
 Test Date:2021-12-03

□ Range: 0 - 180DEG
 □ Interval: 2.0DEG
 Test System:EVERFINE GO-2000B_V1 SYSTEM V2.00.450
 Humidity:65.0%
 Test Distance:5.749m [K=1.0000]
 Remarks:

LUMINANCE LIMITATION CURVES

NAME: R25	TYPE:	WEIGHT:
SPEC.:	DIM.:	SERIAL No.:
MFR.:	SUR.: 0.025*1	Shielding Angle:



LUMINANCE cd/(m2)		
G (DEG)	C0/180	C90/270
85	1770	29738
80	1614	14846
75	1947	9870
70	1941	7426
65	2146	5955
60	2132	5005
55	2264	4329
50	2252	3845
45	2345	3472

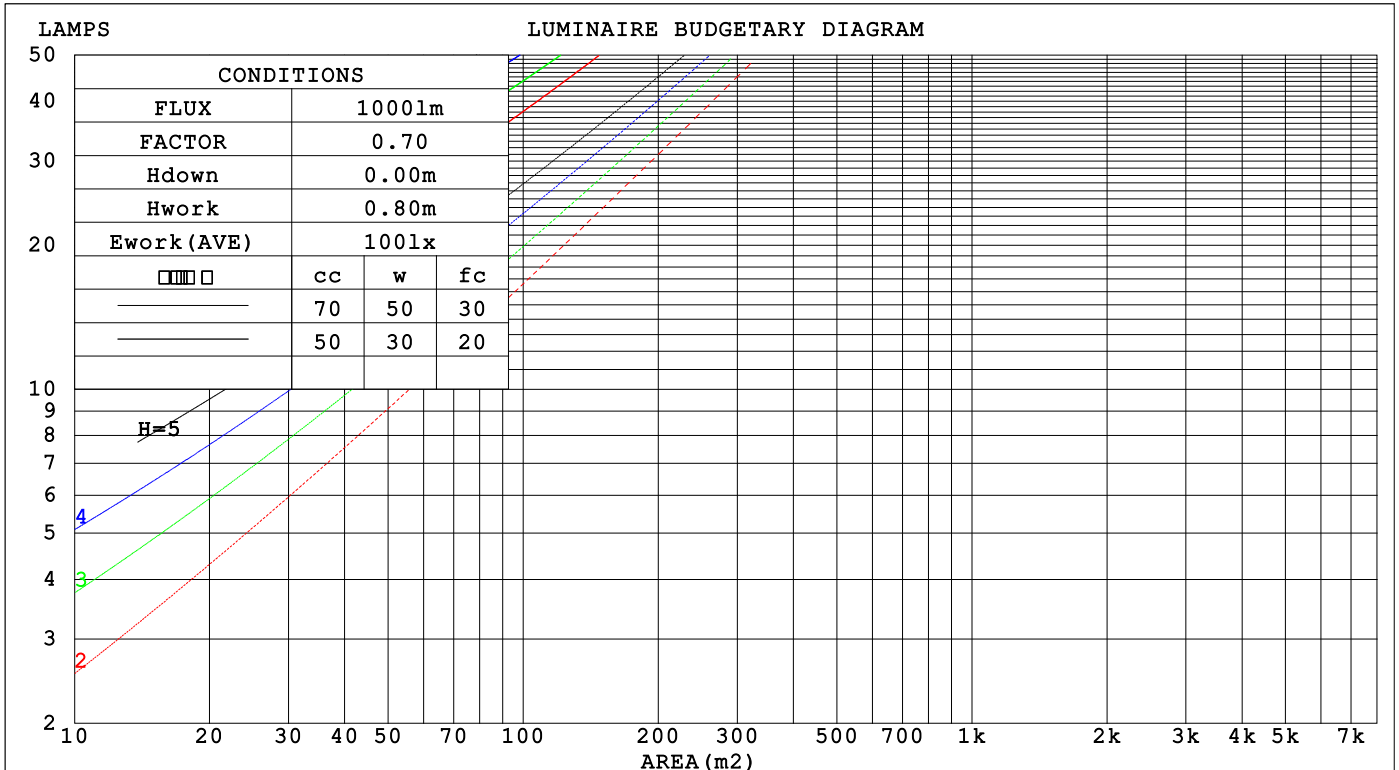
C Range: 0 - 360DEG
 C Interval: 22.5DEG
 Test Speed: HIGH
 Temperature: 25.3DEG
 Operators:
 Test Date: 2021-12-03

Range: 0 - 180DEG
 Interval: 2.0DEG
 Test System: EVERFINE GO-2000B_V1 SYSTEM V2.00.450
 Humidity: 65.0%
 Test Distance: 5.749m [K=1.0000]
 Remarks:

CU AND LUMINAIRE BUDGETARY ESTIMATE DIAGRAM

NAME: R25	TYPE:	WEIGHT:
SPEC.:	DIM.:	SERIAL No.:
MFR.:	SUR.: 0.025*1	Shielding Angle:

□cc	80%			70%			50%			30%			10%			0
□w	50%	30%	10%	50%	30%	10%	50%	30%	10%	50%	30%	10%	50%	30%	10%	0
□fc	20%			20%			20%			20%			20%			0
RCR	RCR:Room Cavity Ratio						Coefficients of Utilization(CU)									
0.0	1.10	1.10	1.10	1.04	1.04	1.04	.91	.91	.91	.79	.79	.79	.69	.69	.69	.63
1.0	.90	.85	.80	.85	.80	.75	.73	.70	.66	.63	.60	.58	.54	.52	.50	.45
2.0	.77	.69	.62	.72	.65	.59	.62	.57	.52	.53	.49	.45	.45	.42	.39	.35
3.0	.66	.57	.50	.62	.54	.47	.54	.47	.42	.46	.41	.37	.39	.35	.31	.28
4.0	.58	.49	.41	.54	.46	.39	.47	.40	.35	.40	.35	.30	.34	.30	.26	.23
5.0	.51	.42	.35	.48	.39	.33	.42	.35	.29	.36	.30	.26	.30	.26	.22	.19
6.0	.46	.37	.30	.43	.34	.28	.37	.30	.25	.32	.27	.22	.27	.23	.19	.16
7.0	.41	.32	.26	.39	.30	.25	.34	.27	.22	.29	.24	.19	.25	.20	.17	.14
8.0	.37	.29	.23	.35	.27	.22	.31	.24	.19	.27	.21	.17	.23	.18	.15	.12
9.0	.34	.26	.20	.32	.24	.19	.28	.22	.17	.24	.19	.15	.21	.17	.13	.11
10.0	.31	.23	.18	.29	.22	.17	.26	.20	.15	.23	.17	.14	.19	.15	.12	.10



C Range: 0 - 360DEG
 C Interval: 22.5DEG
 Test Speed: HIGH
 Temperature:25.3DEG
 Operators:
 Test Date:2021-12-03

□ Range: 0 - 180DEG
 □ Interval: 2.0DEG
 Test System:EVERFINE GO-2000B_V1 SYSTEM V2.00.450
 Humidity:65.0%
 Test Distance:5.749m [K=1.0000]
 Remarks:

WEC AND CCEC

NAME: R25	TYPE:	WEIGHT:
SPEC.:	DIM.:	SERIAL No.:
MFR.:	SUR.: 0.025*1	Shielding Angle:

<input type="checkbox"/> cc	80%			70%			50%			30%			10%			0
<input type="checkbox"/> w	50%	30%	10%	50%	30%	10%	50%	30%	10%	50%	30%	10%	50%	30%	10%	0
<input type="checkbox"/> fc	20%			20%			20%			20%			20%			0
RCR	RCR:Room Cavity Ratio						Wall Exitance Coefficients(WEC)									
0.0																
1.0	.400	.228	.072	.382	.218	.069	.347	.199	.064	.316	.182	.058	.287	.166	.054	
2.0	.338	.185	.057	.321	.177	.055	.290	.161	.050	.261	.147	.046	.235	.133	.042	
3.0	.297	.158	.047	.282	.151	.045	.253	.137	.042	.227	.124	.038	.202	.112	.035	
4.0	.265	.138	.041	.251	.132	.039	.225	.120	.036	.201	.108	.033	.179	.097	.030	
5.0	.240	.122	.035	.227	.117	.034	.203	.106	.031	.181	.096	.028	.160	.086	.026	
6.0	.219	.110	.031	.208	.105	.030	.186	.095	.028	.165	.086	.025	.146	.077	.023	
7.0	.202	.100	.028	.191	.095	.027	.171	.086	.025	.152	.078	.023	.134	.070	.020	
8.0	.187	.091	.026	.177	.087	.025	.158	.079	.023	.140	.071	.021	.124	.064	.019	
9.0	.174	.084	.023	.165	.080	.023	.147	.073	.021	.131	.066	.019	.115	.059	.017	
10.0	.162	.078	.022	.154	.074	.021	.138	.067	.019	.122	.061	.017	.108	.054	.016	

<input type="checkbox"/> cc	80%			70%			50%			30%			10%			0
<input type="checkbox"/> w	50%	30%	10%	50%	30%	10%	50%	30%	10%	50%	30%	10%	50%	30%	10%	0
<input type="checkbox"/> fc	20%			20%			20%			20%			20%			0
RCR	RCR:Room Cavity Ratio						Ceiling Cavity Exitance Coefficients(CCEC)									
0.0																
1.0	.469	.469	.469	.400	.400	.400	.273	.273	.273	.157	.157	.157	.050	.050	.050	
2.0	.467	.436	.408	.400	.374	.351	.273	.257	.243	.157	.149	.141	.050	.048	.046	
3.0	.461	.414	.375	.395	.356	.324	.270	.247	.226	.156	.143	.132	.050	.046	.043	
4.0	.453	.398	.354	.389	.344	.307	.267	.239	.215	.154	.139	.127	.050	.045	.042	
5.0	.446	.386	.341	.383	.334	.296	.263	.233	.209	.152	.136	.123	.049	.044	.041	
6.0	.438	.377	.332	.376	.326	.289	.259	.228	.204	.150	.134	.121	.048	.044	.040	
7.0	.431	.369	.325	.371	.320	.283	.256	.224	.200	.148	.132	.119	.048	.043	.039	
8.0	.424	.363	.320	.365	.315	.279	.252	.221	.198	.146	.130	.118	.047	.043	.039	
9.0	.418	.358	.317	.360	.310	.276	.249	.218	.196	.145	.129	.117	.047	.042	.039	
10.0	.411	.353	.314	.354	.307	.274	.246	.216	.194	.143	.127	.116	.046	.042	.038	

C Range: 0 - 360DEG
 C Interval: 22.5DEG
 Test Speed: HIGH
 Temperature:25.3DEG
 Operators:
 Test Date:2021-12-03

Range: 0 - 180DEG
 Interval: 2.0DEG
 Test System:EVERFINE GO-2000B_V1 SYSTEM V2.00.450
 Humidity:65.0%
 Test Distance:5.749m [K=1.0000]
 Remarks:

UGR(Unified Glare Rating) Table

NAME: R25		TYPE:					WEIGHT:				
SPEC.:		DIM.:					SERIAL No.:				
MFR.:		SUR.: 0.025*1					Shielding Angle:				
ceiling/cavity		0.7	0.7	0.5	0.5	0.3	0.7	0.7	0.5	0.5	0.3
walls		0.5	0.3	0.5	0.3	0.3	0.5	0.3	0.5	0.3	0.3
working plane		0.2	0.2	0.2	0.2	0.2	0.2	0.2	0.2	0.2	0.2
Room dimensions		Viewed crosswise					Viewed endwise				
x = 2H y = 2H		15.2	16.4	15.9	17.2	18.1	18.8	20.0	19.6	20.8	21.7
	3H	16.8	17.9	17.6	18.7	19.6	22.2	23.3	23.0	24.1	25.0
	4H	17.5	18.5	18.3	19.3	20.3	24.1	25.1	24.9	25.9	26.9
	6H	18.1	19.0	18.9	19.8	20.8	26.3	27.2	27.0	28.0	29.0
	8H	18.3	19.2	19.1	20.0	21.0	27.5	28.4	28.2	29.2	30.2
	12H	18.4	19.3	19.2	20.1	21.1	28.8	29.7	29.6	30.5	31.6
	4H 2H	16.9	17.9	17.7	18.7	19.7	19.4	20.4	20.1	21.2	22.1
	3H	18.8	19.7	19.6	20.5	21.5	23.0	23.9	23.8	24.7	25.7
	4H	19.7	20.5	20.5	21.4	22.4	25.1	25.9	25.9	26.8	27.8
	6H	20.5	21.2	21.3	22.1	23.1	27.5	28.2	28.3	29.1	30.1
	8H	20.8	21.5	21.6	22.3	23.4	28.8	29.5	29.7	30.4	31.4
	12H	21.0	21.7	21.9	22.5	23.6	30.3	30.9	31.2	31.8	32.9
	8H 4H	21.5	22.2	22.4	23.1	24.1	25.4	26.1	26.3	27.0	28.1
	6H	22.8	23.3	23.6	24.2	25.4	28.1	28.7	29.0	29.6	30.7
	8H	23.3	23.8	24.2	24.7	25.9	29.7	30.2	30.6	31.1	32.3
	12H	23.8	24.3	24.7	25.2	26.3	31.5	31.9	32.4	32.9	34.0
	12H 4H	22.2	22.8	23.0	23.7	24.8	25.4	26.1	26.3	27.0	28.1
	6H	23.7	24.3	24.6	25.2	26.3	28.3	28.8	29.1	29.7	30.8
	8H	24.5	25.0	25.5	25.9	27.1	29.9	30.4	30.8	31.3	32.5
Variations with the observer position at spacings(CIE Pub.117):											
S = 1.0H		+ 0.1 / - 0.1					+ 0.1 / - 0.1				
1.5H		+ 0.2 / - 0.2					+ 0.2 / - 0.3				
2.0H		+ 0.3 / - 0.4					+ 0.3 / - 0.4				

CIE Pub.117, 469.5 lm Total Lamp Luminous Flux Correct (8log(F/F0) = -2.6)
 Area: 0.025 m2

C Range: 0 - 360DEG
 C Interval: 22.5DEG
 Test Speed: HIGH
 Temperature:25.3DEG
 Operators:
 Test Date:2021-12-03

Range: 0 - 180DEG
 Interval: 2.0DEG
 Test System:EVERFINE GO-2000B_V1 SYSTEM V2.00.450
 Humidity:65.0%
 Test Distance:5.749m [K=1.0000]
 Remarks:

UTILIZATION FACTORS TABLE

NAME: R25	TYPE:	WEIGHT:
SPEC.:	DIM.:	SERIAL No.:
MFR.:	SUR.: 0.025*1	Shielding Angle:

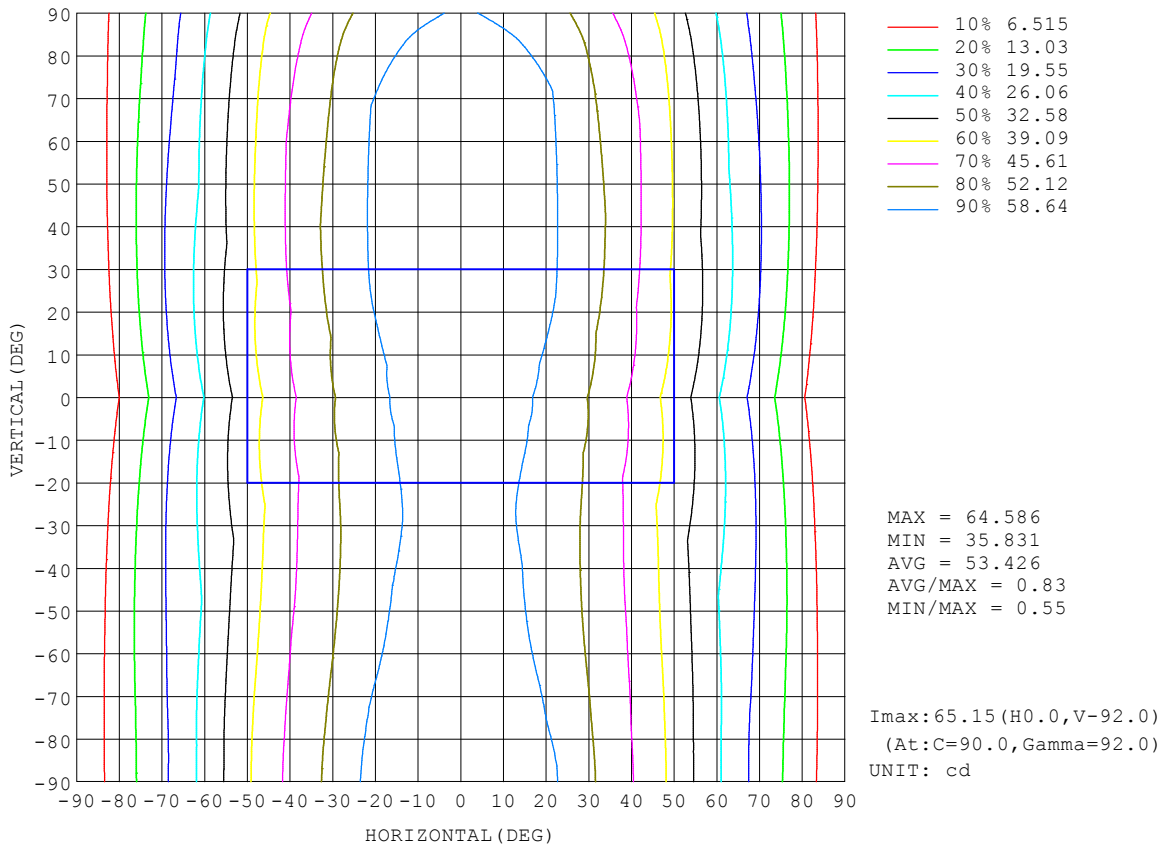
REFLECTANCE										
Ceiling	0.8	0.8	0.8	0.7	0.7	0.7	0.5	0.5	0.5	0
Walls	0.7	0.5	0.3	0.7	0.5	0.3	0.7	0.5	0.3	0
Working plane	0.2	0.2	0.2	0.2	0.2	0.2	0.2	0.2	0.2	0
ROOM INDEX	UTILIZATION FACTORS (PERCENT) $k(RI) \times RCR = 5$									
$k = 0.60$	41	29	21	39	28	21	37	26	20	13
0.80	50	36	28	48	35	27	44	33	26	17
1.00	57	44	35	54	42	34	49	41	32	21
1.25	64	50	41	61	48	40	55	44	37	25
1.50	69	56	47	65	53	45	58	49	42	28
2.00	77	65	55	72	61	53	64	55	49	33
2.50	82	70	61	77	67	59	68	60	53	36
3.00	85	75	67	80	71	64	71	64	57	39
4.00	90	82	74	85	77	70	75	69	63	43
5.00	94	86	79	88	81	75	77	72	67	46
ROOM INDEX	UF(total)									Direct
According to DIN EN 13032-2 2004			Suspended				SHRNOM = 1.25			

C Range: 0 - 360DEG
 C Interval: 22.5DEG
 Test Speed: HIGH
 Temperature: 25.3DEG
 Operators:
 Test Date: 2021-12-03

Range: 0 - 180DEG
 Interval: 2.0DEG
 Test System: EVERFINE GO-2000B_V1 SYSTEM V2.00.450
 Humidity: 65.0%
 Test Distance: 5.749m [K=1.0000]
 Remarks:

ISOCANDELA DIAGRAM

NAME: R25	TYPE:	WEIGHT:
SPEC.:	DIM.:	SERIAL No.:
MFR.:	SUR.: 0.025*1	Shielding Angle:

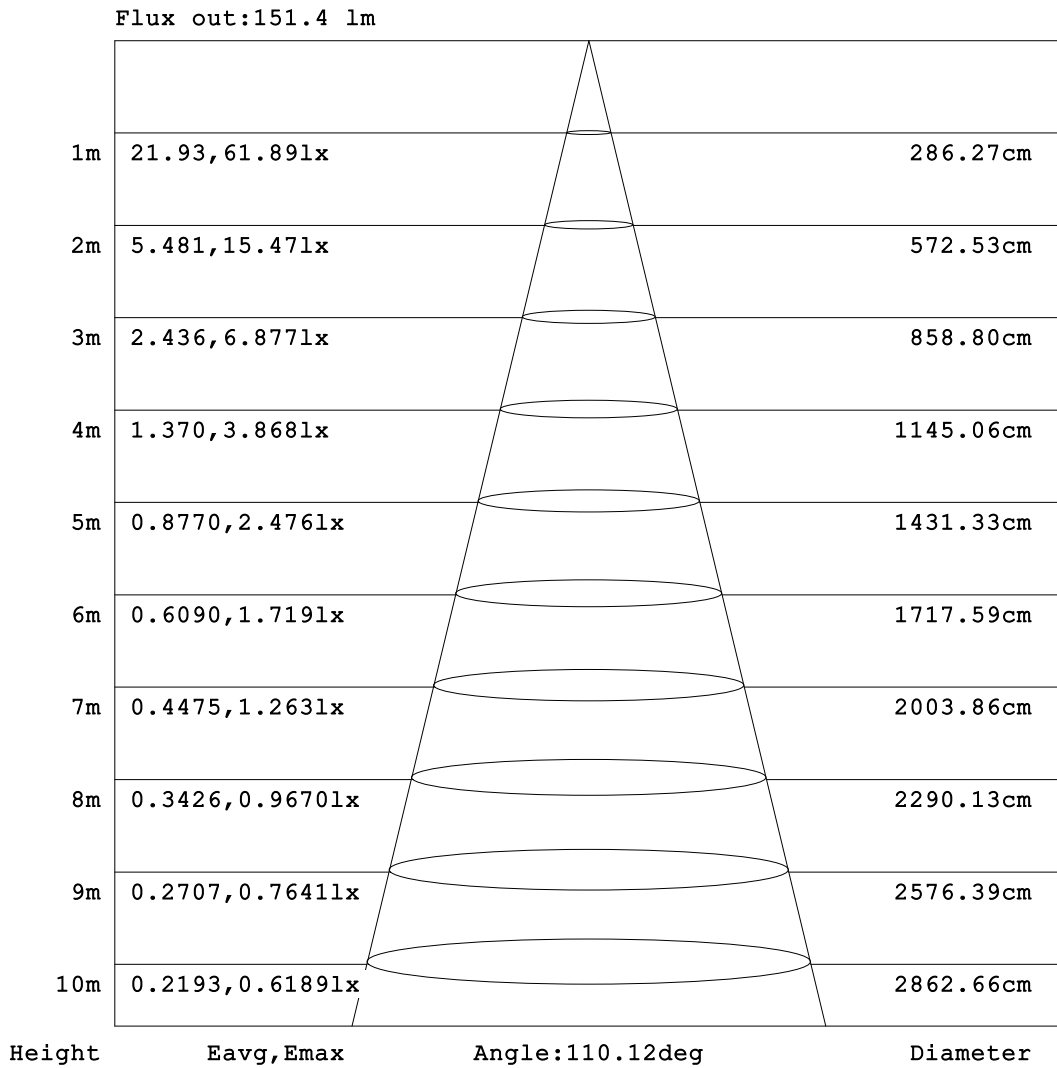


C Range: 0 - 360DEG
 C Interval: 22.5DEG
 Test Speed: HIGH
 Temperature: 25.3DEG
 Operators:
 Test Date: 2021-12-03

Range: 0 - 180DEG
 Interval: 2.0DEG
 Test System: EVERFINE GO-2000B_V1 SYSTEM V2.00.450
 Humidity: 65.0%
 Test Distance: 5.749m [K=1.0000]
 Remarks:

AAI Figure

NAME: R25	TYPE:	WEIGHT:
SPEC.:	DIM.:	SERIAL No.:
MFR.:	SUR.: 0.025*1	Shielding Angle:



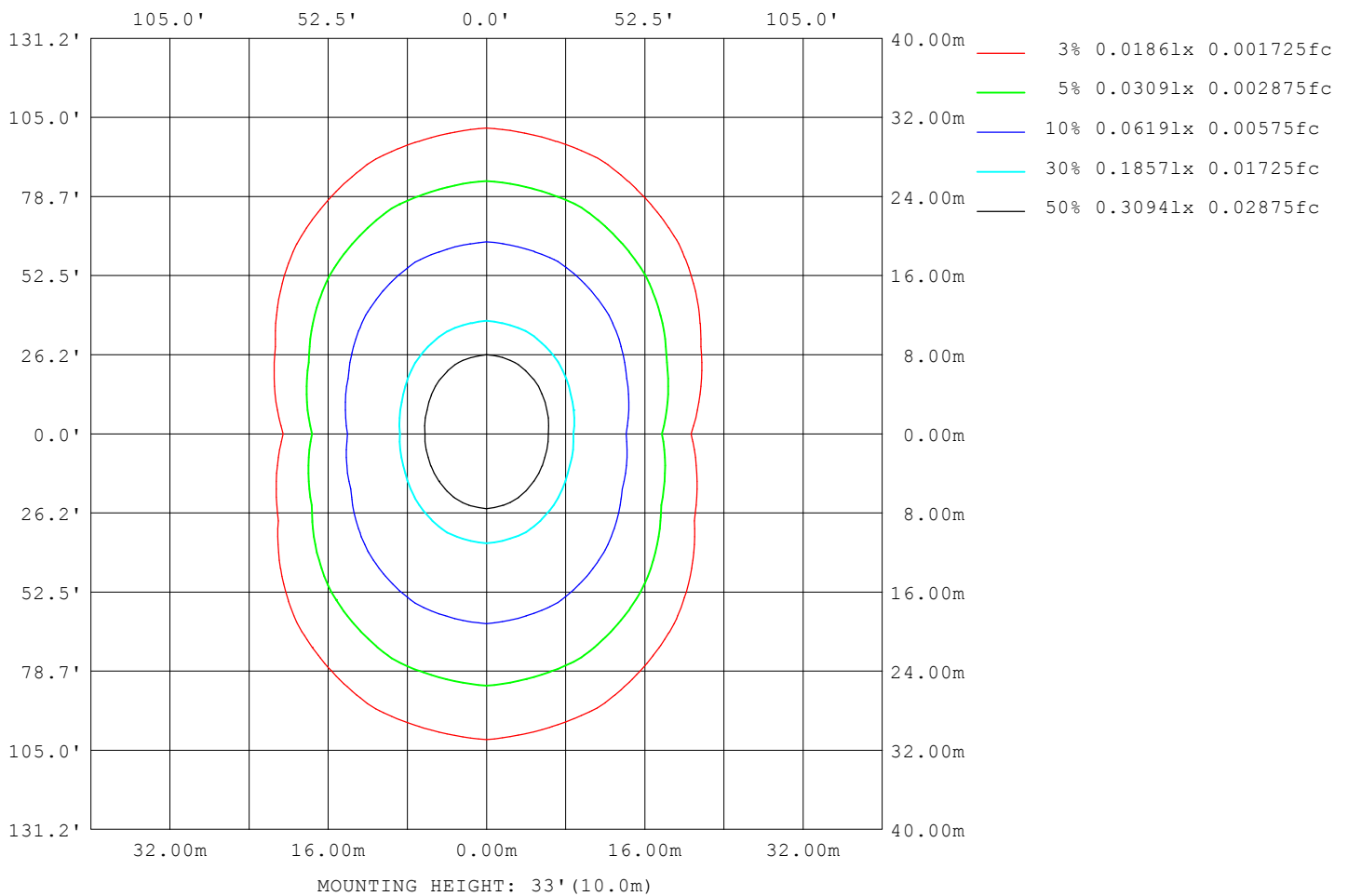
Note: The Curves indicate the illuminated area and the average illumination when the luminaire is at different distance.

C Range: 0 - 360DEG
 C Interval: 22.5DEG
 Test Speed: HIGH
 Temperature: 25.3DEG
 Operators:
 Test Date: 2021-12-03

Range: 0 - 180DEG
 Interval: 2.0DEG
 Test System: EVERFINE GO-2000B_V1 SYSTEM V2.00.450
 Humidity: 65.0%
 Test Distance: 5.749m [K=1.0000]
 Remarks:

ISOLUX DIAGRAM

NAME: R25	TYPE:	WEIGHT:
SPEC.:	DIM.:	SERIAL No.:
MFR.:	SUR.: 0.025*1	Shielding Angle:



C Range: 0 - 360DEG
 C Interval: 22.5DEG
 Test Speed: HIGH
 Temperature: 25.3DEG
 Operators:
 Test Date: 2021-12-03

Range: 0 - 180DEG
 Interval: 2.0DEG
 Test System: EVERFINE GO-2000B_V1 SYSTEM V2.00.450
 Humidity: 65.0%
 Test Distance: 5.749m [K=1.0000]
 Remarks:

LED Avg.L Report

NAME: R25	TYPE:	WEIGHT:
SPEC.:	DIM.:	SERIAL No.:
MFR.:	SUR.: 0.025*1	Shielding Angle:

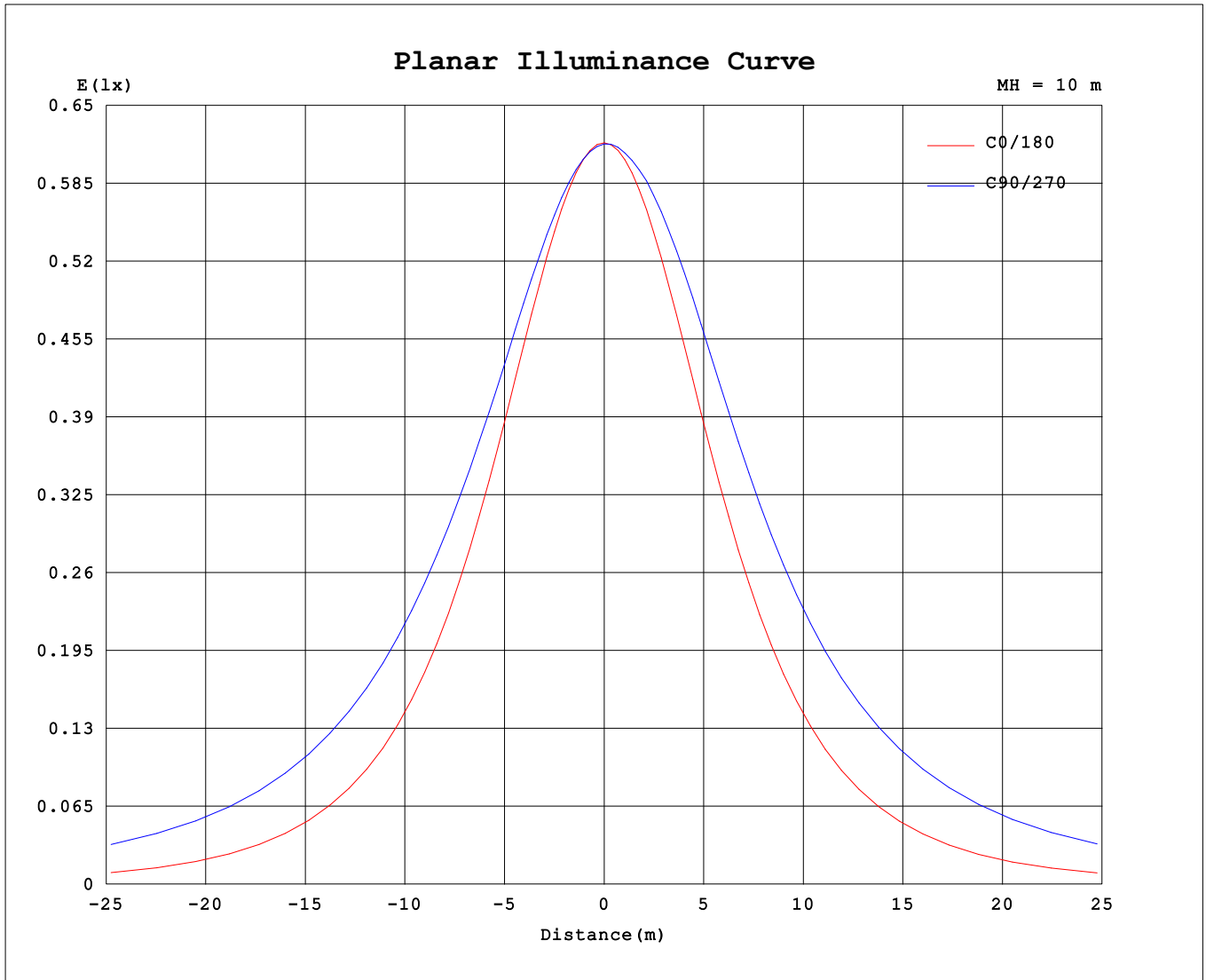
AvgL	cd/m2
L_0~180 (65) av	2027
L_0~180 (75) av	1757
L_0~180 (85) av	1352
L_90~270 (65) av	6028
L_90~270 (75) av	9850
L_90~270 (85) av	29036
L_45 (65) av	4370
L_45 (75) av	6758
L_45 (85) av	19224

Standard: GB/T 29293-2012

C Range: 0 - 360DEG
 C Interval: 22.5DEG
 Test Speed: HIGH
 Temperature:25.3DEG
 Operators:
 Test Date:2021-12-03

Range: 0 - 180DEG
 Interval: 2.0DEG
 Test System:EVERFINE GO-2000B_V1 SYSTEM V2.00.450
 Humidity:65.0%
 Test Distance:5.749m [K=1.0000]
 Remarks:

Planar Illuminance Curve



C Range: 0 - 360DEG
 C Interval: 22.5DEG
 Test Speed: HIGH
 Temperature: 25.3DEG
 Operators:
 Test Date: 2021-12-03

Range: 0 - 180DEG
 Interval: 2.0DEG
 Test System: EVERFINE GO-2000B_V1 SYSTEM V2.00.450
 Humidity: 65.0%
 Test Distance: 5.749m [K=1.0000]
 Remarks:

LUMINOUS DISTRIBUTION INTENSITY DATA

NAME: R25	TYPE:	WEIGHT:
SPEC.:	DIM.:	SERIAL No.:
MFR.:	SUR.: 0.025*1	Shielding Angle:

Table--1

UNIT: cd

C (DEG) \ □ (DEG)	0	22.5	45	67.5	90	112.5	135	157.5	180	202.5	225	247.5	270	292.5	315	337.5			
0	61.8	61.8	61.8	61.8	61.8	61.8	61.8	61.8	61.8	61.8	61.8	61.8	61.8	61.8	61.8	61.8			
5	61.6	61.6	61.6	61.6	61.6	61.6	61.6	61.6	61.6	61.7	61.9	62.0	62.0	61.9	61.9	61.7			
10	60.7	60.6	60.9	61.2	61.4	61.3	60.9	60.6	60.6	61.0	61.6	62.2	62.5	62.3	61.8	61.1			
15	59.6	59.6	60.2	60.8	61.2	61.0	60.3	59.6	59.5	60.1	61.3	62.5	63.0	62.6	61.6	60.3			
20	57.3	57.6	58.9	60.2	60.9	60.4	59.0	57.5	57.2	58.2	60.6	62.8	63.7	62.9	61.0	58.7			
25	55.3	55.9	57.8	59.8	60.8	60.0	57.9	55.8	55.2	56.6	59.9	63.0	64.2	63.2	60.4	57.2			
30	51.8	52.8	55.9	59.2	60.7	59.4	56.1	52.8	51.6	53.8	58.7	63.0	64.6	63.1	59.3	54.5			
35	49.2	50.5	54.6	59.0	60.9	59.2	54.8	50.5	48.9	51.7	57.7	62.8	64.9	62.9	58.2	52.5			
40	44.7	46.7	52.6	58.7	61.2	58.9	52.7	46.7	44.4	48.1	55.8	62.4	65.0	62.6	56.4	49.1			
45	41.4	44.0	51.3	58.5	61.4	58.7	51.4	44.0	41.1	45.5	54.4	62.0	65.0	62.2	55.1	46.6			
50	36.1	39.7	49.3	58.2	61.8	58.5	49.5	39.8	35.8	41.4	52.2	61.3	64.9	61.6	52.9	42.5			
55	32.4	36.8	48.1	58.1	62.1	58.4	48.3	36.9	32.0	38.5	50.6	60.8	64.8	61.1	51.5	39.7			
60	26.6	32.5	46.3	58.0	62.6	58.3	46.7	32.6	26.2	34.1	48.4	60.0	64.6	60.4	49.3	35.4			
65	22.6	29.8	45.3	58.0	63.0	58.3	45.7	30.0	22.2	31.3	46.9	59.5	64.4	59.9	47.9	32.6			
70	16.6	26.1	44.0	58.1	63.5	58.5	44.6	26.4	16.1	27.2	44.9	58.6	64.0	59.1	45.9	28.7			
75	12.6	24.0	43.4	58.1	63.9	58.6	44.1	24.4	12.1	24.7	43.6	58.0	63.6	58.5	44.7	26.3			
80	7.00	21.6	42.6	58.4	64.5	58.8	43.5	22.2	6.50	21.5	41.9	56.9	62.7	57.4	42.9	23.1			
85	3.85	20.3	42.3	58.6	64.8	59.1	43.3	21.1	3.37	19.7	40.8	56.1	61.9	56.5	41.7	21.3			
90	1.04	19.5	42.3	58.8	65.2	59.3	43.3	20.4	0.79	17.8	38.8	54.0	59.6	54.1	39.5	19.1			
95	0.54	19.7	42.3	58.8	65.2	59.4	43.4	20.6	0.55	16.6	37.3	52.2	57.7	52.2	37.8	17.7			
100	0.43	20.0	42.0	58.3	64.6	59.0	43.2	20.7	0.54	14.9	34.4	49.2	54.6	49.1	35.1	16.0			
105	0.50	20.2	41.5	57.4	63.6	58.2	42.0	20.8	0.61	14.0	32.2	47.1	52.2	46.9	33.3	15.1			
110	0.73	20.7	40.6	55.7	61.7	56.6	40.2	21.2	0.82	13.1	28.7	42.5	48.5	43.5	30.7	13.9			
115	1.02	21.0	39.9	54.3	60.1	54.5	39.1	21.3	1.07	12.4	27.0	40.1	45.9	41.1	29.0	13.3			
120	1.53	21.4	38.6	52.0	57.3	50.7	35.3	19.5	1.29	10.9	23.2	35.9	41.9	37.4	26.5	12.4			
125	1.87	21.6	37.7	50.2	55.3	48.8	32.0	18.6	1.43	10.0	21.2	33.5	39.2	34.9	24.8	11.7			
130	2.34	21.8	36.1	47.3	51.9	45.7	28.9	17.0	1.65	8.90	17.9	28.9	34.9	31.2	22.4	10.9			
135	2.58	21.4	34.9	45.2	49.4	40.8	26.8	16.0	1.79	8.17	16.3	24.5	31.7	28.7	20.7	10.1			
140	2.93	20.4	33.0	41.8	45.5	33.7	23.9	13.8	1.99	6.98	13.6	20.2	27.2	25.0	18.3	9.27			
145	3.13	19.5	31.6	39.5	42.7	29.8	21.8	12.9	2.11	6.44	12.0	17.5	24.2	22.5	16.8	8.69			
150	3.43	18.3	29.0	35.7	37.1	24.8	18.6	12.2	2.58	5.75	9.65	13.6	18.5	19.1	13.8	7.41			
155	3.62	17.7	26.5	33.1	34.5	21.3	16.0	12.9	3.30	5.49	8.08	11.3	17.2	16.5	12.2	5.87			
160	4.02	16.6	23.0	27.8	29.3	15.7	14.7	14.2	4.28	4.31	7.11	7.79	13.8	12.4	10.1	3.24			
165	4.38	15.5	20.9	24.5	25.0	13.4	15.2	14.7	4.82	3.24	6.46	6.38	10.6	10.6	7.74	2.12			
170	5.03	13.0	18.0	19.9	10.7	10.8	15.6	14.7	5.40	2.00	3.86	4.09	4.16	5.46	3.17	2.76			
175	5.38	10.5	14.8	16.4	8.87	11.4	14.9	14.2	5.62	1.89	2.12	2.33	1.98	2.32	2.04	5.95			
180	5.69	5.78	6.17	6.66	3.53	8.49	10.8	11.9	5.72	5.81	6.18	6.78	3.50	8.63	10.7	12.1			

C Range: 0 - 360DEG
 C Interval: 22.5DEG
 Test Speed: HIGH
 Temperature: 25.3DEG
 Operators:
 Test Date: 2021-12-03

□ Range: 0 - 180DEG
 □ Interval: 2.0DEG
 Test System: EVERFINE GO-2000B_V1 SYSTEM V2.00.450
 Humidity: 65.0%
 Test Distance: 5.749m [K=1.0000]
 Remarks: