

INTRODUCTION

GTF5171A: LIGHTING FIXTURE

FEATURES

- Optimized Antiglare Engraved Shade
- Easy Fast Installation and Maintenance Freely
- Long Lifespan Design > 50,000hours
- Working Temperature: -20°C~50°C

MATERIALS & FINISH

- LED LAMP: E26/E27
- Housing: Aluminum Profile
- Lampshade: Engraved Patterned Steel
- Notes: Available for Custom Patterns

INSTALLATION

- Suitable for Interior Lighting
- [FWA]: Wall Surface Mounted
 - Notes: Available Fixed on 3" & 4" JBOX.
 - Notes: Remote Driver can be In 4" JBOX
- [FFS]: Flush Surface Mounted
- [FPW]: Wire Pendant
- [FPS]: Stem Pendant
- [FJP]: Fixing Plate on JBOX/Outlet Box
- [FRF]: Recessed Trim Fixture

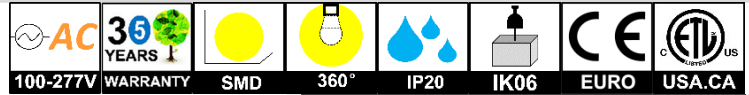
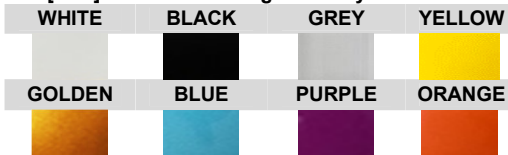
NOTES: Custom Installation and Accessories Referred to Another Catalogue of Fixing Kits.

STANDARDS

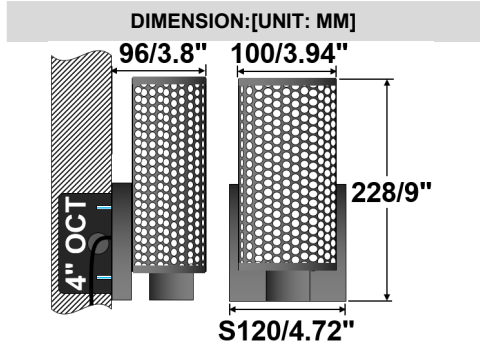
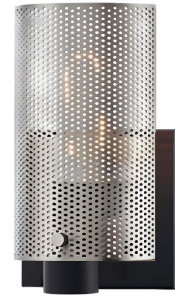
- Designed and Manufactured to Comply with TUV/CE/RoHS/CB/SAA/Erp/cETL/FCC
- Withstand Voltage: 3.75KV, Surge Protection: 2KV
- IP20 Protection, Class I Electric.

OPTIONS

- LED CCT: 1800K~10,000K/R/G/B/RGBW
- CRI: [E] Ra80, [G] Ra90, [H] Ra97
- [SFH]: Custom Housing Finish by RAL Code



**(MCA100A)-[FWA]
(MCB100A)-[FWA]
PATTERN: BMP102A**



MODEL	INSTALLATION	INPUT	FITMENT		REMARK
			TYPE	POWER	
GTF51671A-MCA100A	[FWA]	AC100~277V	1xE26/E27	Maxi.1x50W	

NOTE:

All parameters are measured at 25°C ambient temperature, 35% humidity experimental environment. Tolerances of power and luminous flux are ±10%, tolerance of color rendering index is ±5.

MODEL	POWER [W]	LED TYPE	CCT [K]	CRI	FLUX [LM]	POWER FACTOR	BEAM ANGLE	CUSTOM DIMMING	INPUT [V]
GTR5761A-MCB100A	10W	120x0.5W SMD2835	H2700K	RA97	270	>0.9	360°	[CDP]:PWM(1%) Following by Remote Driver	CV DC24V [CV DC12V] [CV DC42V]
			H3000K	RA97	300				
			H3500K	RA97	300				
			H4000K	RA97	320				
			H5000K	RA97	320				
			H6000K	RA97	320				
	2C@10W	TWH	H2700K H6000K	RA97	270	>0.9			
4C@10W	RGBW	620nm 520nm 460nm H2700K	\	270	>0.9				
5C@10W	RGBTW	620nm 520nm 460nm H2700K H6000K	\	270	>0.9				
GTR5761A-MCB100A	15W	120x0.5W SMD2835	H2700K	RA97	400	>0.9	360°	[CDN]:Non-Dim [CDT]:TRIAC(10%) [CDV]:0/1~10V(8%) [CDV0]:0~10V(1%) [CDV1]:1~10V(15%) [CDX]:DMX512(1%) [CDA]:DALI(1%) [CDP]:PWM(1%)	AC100~277V [AC100~240V] [AC100~347V] 50/60Hz
			H3000K	RA97	420				
			H3500K	RA97	420				
			H4000K	RA97	450				
			H5000K	RA97	450				
			H6000K	RA97	450				
	2C@15W	TWH	H2700K H6000K	RA97	400	>0.9			
4C@15W	RGBW	620nm 520nm 460nm H2700K	\	400	>0.9				
5C@15W	RGBTW	620nm 520nm 460nm H2700K H6000K	\	400	>0.9				

NOTE:

All parameters are measured at 25°C ambient temperature, 35% humidity experimental environment. Tolerances of power and luminous flux are ±10%, tolerance of color rendering index is ±5.

CUSTOM LAMPSHADE PATTERN

[BMP] Customs Mask with Engraved Pattern					
Notes: Custom Cover Range of Mask Shield : 0~360D					
[BMP101A180D] STRUM	[BMP102A180D] HONEYCOMB	[BMP103A180D] SCALE	[BMP104A180D] STRIA		
[BMP101A] STRUM	[BMP102A] HONEYCOMB	[BMP102B] HONEYCOMB	[BMP103A] SCALE	[BMP104A] STRIP	[BMP105A] NEST
[BMP105E] NEST	[BMP106A] NET	[BMP107A]	[BMP109A]	[BMP110A]	
	[BMP201B]	[BMP201C]	[BMP201D]		
[BMP301A] FIREWORKS	[BMP301B] FIREWORKS	[BMP302A] WINDMILL	[BMP303A] LOVE	[BMP501A] OWL	
[BMP601A] ROSE	[BMP611C] TREE	[BMP651A] TREE	[BMP651C] TREE	[BMP661A] LEAF	
[BMP701A] DRIP	[BMP701B] DRIP	[BMP702A] PEARL	[BMP702B] PEARL	[BMP703A] STONE	[BMP703B] ROCK

Case Study

(MCA125A)-[BGG-FPT102A]-[PSA-L3000]



(MCA125A)-[BGG-FPT701A]-[PSA-L3600]



(MCA200A)-[BGG-FPT703A]-[PSA-L3600]



(MCA125A)-[BGG-FPT702A]-[PSA-L910]

