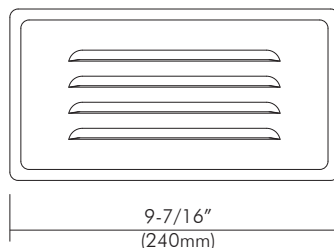
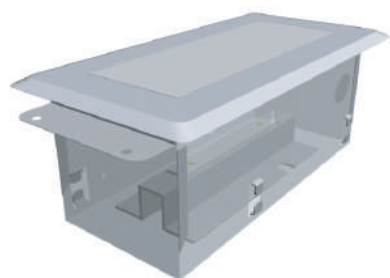


SONA 8

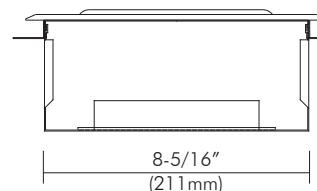
120VAC LED DoB Interior Step Light



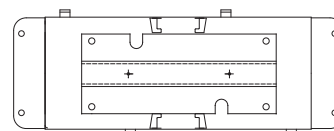
LED



4-15/16"
(125mm)



3-7/16"
(88mm)



3-1/2"
(89mm)



DESCRIPTION

The SONA 8 is designed with state-of-the-art LED DoB technology and is suited for indoor use. The Step Light contains 20 LEDs, ideally spaced to produce bright, even illumination. Engineered with superior thermal management, it provides economical, long lasting performance and trouble free operation. Suitable for Damp Locations.

DESIGN FEATURES

Housing & Trims

- Cast aluminum housing with trim painted with weather proof white, black or silver.

Electronics

- 120V AC Direct DoB technology; 20 LED chips for 5W of power (~400lm).

Illumination

- 80 CRI with a color temperature of 3000K Standard. Contact factory for other CRI and Color Temperatures.

Limited Warranty

- LED Module: 5 years/50K hours
- Product: 3 years

Listing

- cCSAus Damp Location

TRIM



Louvered face plate

TR-842-WH
TR-842-BK
TR-842-SI



Open face plate

TR-843-WH
TR-843-BK
TR-843-SI

Ordering Information

Model	-Trims	-Finish	-Option
SONA 8 = 120VAC, DoB 5W Interior Step Light	-TR-842 = Louvered -TR-843 = Open	-WH = White -BK = Black -SI = Silver	-HB = 24" Hanger Bars

Example : SONA 8-TR-842-WH-HB