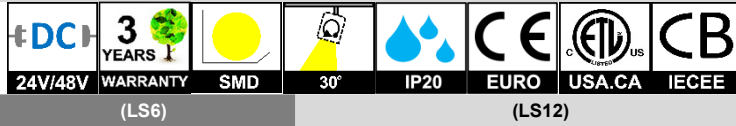


W20 MAGNETIC TRACK LED SPOTLIGHT



INTRODUCTION

FEATURE

Anti-glare Uniform Lighting UGR≤16
 Long Lifespan Design >50,000Hours
 Working Temperature: -20°C~40°C

MAIN MATERIAL

LED BRAND: GUBO
 LED Driver Brand: GUBO
 Housing: Die-casted Aluminum
 Optics: High Efficiency Reflector
 Diffuser: Light-frosted PC Diffuser

INSTALLATION

W20 Magnetic Track Slotted
 Suitable for Interior Lighting

STANDARD

Designed and Manufactured to Comply with
 CE/RoHS/EMF/TUV/SAA/Erp/cETL/FCC
 IP20 Protection, Class III Electric

OPTION

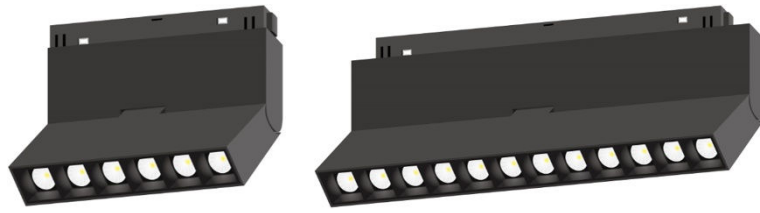
LED CCT: 1,800K~10,000K/R/G/B/Y
 [CRI]: Ra80, [G] Ra90, [H] RA97
 Custom Housing Finished Color:

Custom Housing Finished Color:

MATT WHITE [HMWT]	MATT BLACK [HMBK]
-------------------	-------------------

Custom Baffle Finished Color:

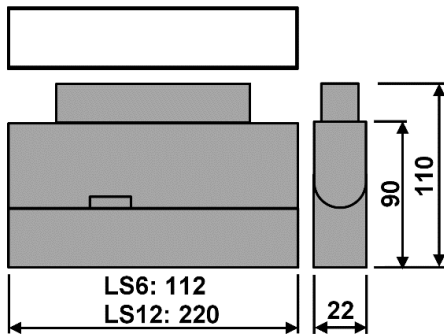
MATT WHITE [BFMWT]	MATT BLACK [BFMBK]
--------------------	--------------------



DIMENSION: [UNIT: MM]

[GL] LOUVER

CASE STUDY:



MODEL	POWER [W]	LED TYPE	CCT [K]	CRI	FLUX [LM]	POWER FACTOR	BEAM ANGLE	REMOTE CONTROL	INPUT [V]
GTR4423A-LS6 GTR4423A-LS6-GL	6W	6x2W SMD3030	G2700K	RA90	480	>0.5	BR30D: 30°	[CDP]:PWM(1%) [REMOTE DRIVER] [CDT]:TRIAC(10%) [CDV]:0~1~10V(8%) [CDV0]:0~10V(1%) [CDV1]:1~10V(10%) [CDX]:DMX512(1%) [CDA]:DALI(1%) [CDZ]:ZIGBEE(1%) [CRF]:2.4GRF(1%)	DC24V [DC48V] [REMOTE DRIVER] AC220~240V [AC100~240V] [AC100~277V] [AC100~347V] 50/60Hz
			G3000K	RA90	540				
			G3500K	RA90	540				
			G4000K	RA90	570				
			G5000K	RA90	570				
			G6000K	RA90	540				
			H2700K	RA97	390				
			H3000K	RA97	420				
			H3500K	RA97	420				
			H4000K	RA97	450				
			H5000K	RA97	450				
			H6000K	RA97	420				
GTR4423A-LS12 GTR4423A-LS12-GL	12W	12x2W SMD3030	G2700K	RA90	960	>0.5	BR30D: 30°	[CDP]:PWM(1%) [REMOTE DRIVER] [CDT]:TRIAC(10%) [CDV]:0~1~10V(8%) [CDV0]:0~10V(1%) [CDV1]:1~10V(10%) [CDX]:DMX512(1%) [CDA]:DALI(1%) [CDZ]:ZIGBEE(1%) [CRF]:2.4GRF(1%)	DC24V [DC48V] [REMOTE DRIVER] AC220~240V [AC100~240V] [AC100~277V] [AC100~347V] 50/60Hz
			G3000K	RA90	1080				
			G3500K	RA90	1080				
			G4000K	RA90	1140				
			G5000K	RA90	1140				
			G6000K	RA90	1080				
			H2700K	RA97	780				
			H3000K	RA97	840				
			H3500K	RA97	840				
			H4000K	RA97	900				
			H5000K	RA97	900				
			H6000K	RA97	840				
	2C@6W	6TGW	G2700K	G6000K	RA90	390	>0.5		
	2C@12W	12TGW	G2700K	G6000K	RA90	780	>0.5		

NOTE:

All parameters are measured at 25°C ambient temperature, 35% humidity experimental environment.