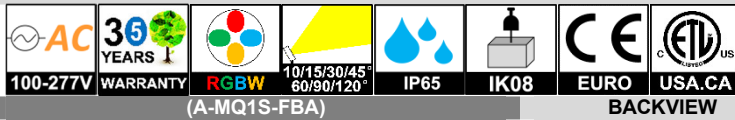


GTE6605A:MODULAR CHAIN LED PROJECTOR LIGHT



INTRODUCTION

FEATURE

Optimized Professional Architecture Lighting
 Superior Durable Outdoor Lighting
 Modular Structure For Various Installation Location
 Long Lifespan Design >50,000hours
 Working Temperature: -30°C~50°C

MAIN MATERIAL

LED Brand: GUBO
 Driver Brand: GUBO
 Housing: Die-casted Aluminum Radiator
 Optics: High Efficiency PC Lens
 Diffuser: Clear Tempered Glass Diffuser

INSTALLATION

Stake Mount or Surface Mounted
 Suitable for Exterior Illumination, Like Architecture.....

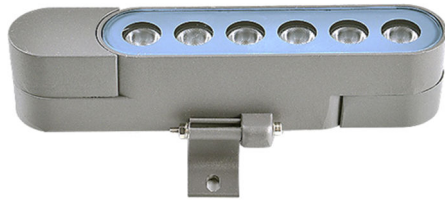
STANDARD

Designed and Manufactured to Comply with CE/RoHS/CB/cETL/SAA/SASO Standard
 IP67 Protection, Class III Electric

OPTIONS

LED CCT: 1,800K~10,000K/R/G/B/Y
 LED Grown Light: **Full Spectrum** 380nm~840nm
 [CRI]: [E] Ra80, [G] Ra90, [H] Ra97
 [BGL]: Anti-glare Louver
 [FBA]: Adjustable Mounting Bracket
 [FBS]: Ground Spike
 [NEST]: Rattan Nest
 [CCB-FM]: Female and Male waterproof Connector
 [F1] Custom Housing Finish: Colors by RAL Code

WHITE	BLACK	GREY	DARK GREY	BRASS
RAL9010P	RAL9005P	RAL7042P	RAL7016P	RAL1024P

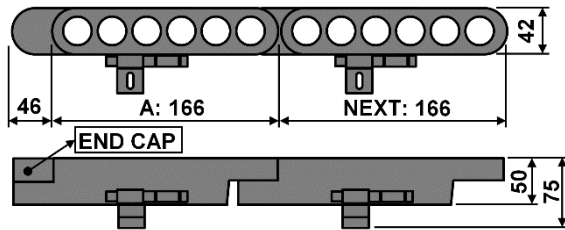


STRAIGHT LINEAR

BENDABLE



DIMENSION: [UNIT: MM]



[BGL]



[BDF]



[FBS]



CASE STUDY



MODEL	Parameter of Only One Modular LS1					POWER FACTOR	BEAM ANGLE	REMOTE DRIVER	INPUT [V]			
	POWER [W]	LED TYPE	CCT [K]	CRI	FLUX [LM]							
GTE6605A-MQ1S-FBA FBS	6W	6x2W SMD3030	G2700K	RA90	450	> 0.9	[Symmetric] BL15D:15° BL25D:25° BL30D:30° BL45D:45° BL60D:60° BL90D:90° BL120D:120° [Oval] BLV10x45° BLV10x65° BLV30x70° [BDF] BDF:120° [Louver] LM-20%	[CDT]:TRIAC(10%) [CDV]:0~10V(8%) [CDV0]:0~10V(1%) [CDV1]:1~10V(10%) [CDX]:DMX512(1%) [CDA]:DALI(1%) [CDP]:PWM(1%)	DC24V [DC12V] [DC48V]			
			G3000K	RA90	490							
			G3500K	RA90	490							
			G4000K	RA90	520							
			G5000K	RA90	520							
	9W	6x2W SMD3030	G2700K	RA90	680	> 0.9						
			G3000K	RA90	730							
			G3500K	RA90	730							
			G4000K	RA90	780							
			G5000K	RA90	780							
	2C@6W	TWG	G2700K	G6500K	RA90	320				> 0.9		
	3C@6W	RGB	620nm	520nm	460nm	\				320	> 0.7	
	4C@6W	RGBW	620nm	520nm	460nm	G2700				\	320	> 0.5
	4C@6W	RGBA	620nm	520nm	460nm	590nm				\	320	> 0.5

NOTE:

All parameters are measured at 25°C ambient temperature, 35% humidity experimental environment.
 Tolerances of power and luminous flux are ±10%, tolerance of color rendering index is ±5.