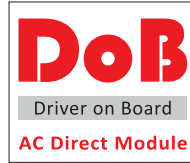


# CIP-4DC/P-LCT

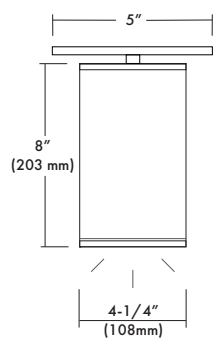
4" Round Ceiling and Pendant Mount Cylinders  
120/277V, 3 Power/Lumens & 5 CCT Selectable



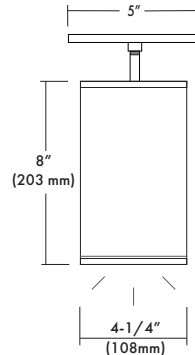
## 4" LED Cylinder



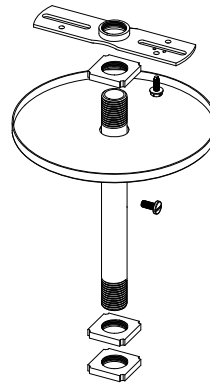
4DC/P-LCT



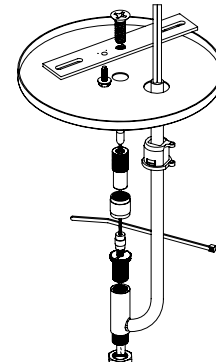
(Ceiling Mount)



(Pendant Mount)



(Standard Pendant)



(Pendant Cable and Cord)



## DESCRIPTION

The CIP-4D-LCT 4" Round Cylinders are Wet Location and IP65 rated for outdoor use. These cylinders come in two versions: ceiling "C" and pendant "P". The pendant mount cylinders are available with the standard pendant, swivel mount pendant, or pendant cable and cord. The fixtures are offered in 15W, 20W and 30W LED, DoB modules with a customized IC, highbred circuit on board with dimming down to 5% with most Triac and ELV or 0-10V dimming. Non-Insulated DoB, Direct AC technology has low heat, great reliability and has been designed for these fixtures to operate environments between -22° F to 104° F (-30° C to 40° C). Optional EM Drivers for emergency lighting are available.

## DESIGN FEATURES

### Features

- Weatherproof aluminum powder coated white & black finish for outdoor & indoor applications.
- 15W, 20W & 30W Selectable power.
- 2700K, 3000K, 3500K, 4000K & 5000K Selectable CCT.
- 90 CRI Standard.
- Universal 120-277V 50/60 Hz Input.
- Triac, ELV & 0-10V dimming.

### Mounting

- Mount completely assembled fixture directly onto ceiling J-box. The ceiling mount model consists of a canopy kit and a 3" threaded nipple.

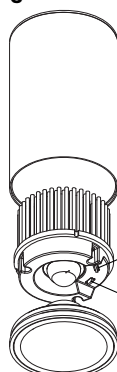
### Limited Warranty

- LED Module & Product: 3 years

### Listing

- ETL cETL Listed
- State of California Title 24
- Wet location (IP65 Rated)

### Drawing



CCT Selectable Switch

Power Selectable Switch

### SPECIFICATION

Input Voltage	120/277V		
Wattage	15W	20W	30W
Lumen	1,050	1,400	2,100
Efficacy (LPW)	70 lm/W	70 lm/W	70 lm/W
Beam Angle	48°		
CRI (Standard)	90		
CCT (Color +/-5%)	2700K, 3000K, 3500K, 4000K, 5000K		
Dimming	Triac, ELV & 0-10V Dimming*		
LED Module	3 years		
Environment	Wet location		

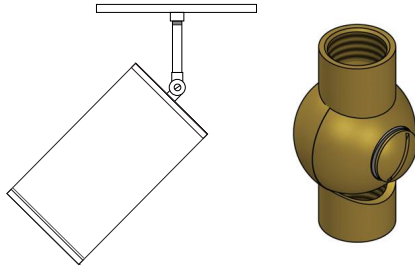
\*Contact factory for custom beam angles

### 120V Approved Dimmers

- \* Lutron: Skylark S-600  
: MRF2-6DN-120  
: MACL-153M  
: DVLV-600P  
: SELV-300P  
: CTCL-153P  
: DVELV-303P  
: DVCL-153P
- \* Leviton: D600R, Acenti: Ate06, Trimatron #705W
- \* Cooper Devine incandescent dimmer 600W
- \* Pass&seymour harmony incandescent 600W
- For 0-10V Driver\*\*
- \* Lutron: Nova 0-10V : NTFTV  
Diva 0-10V : DVTV
- \* Leviton: Decora 0-10V : IP710DL

\* Consult tech. service or factory for additional dimmers  
\*\* Consult with factory if you are not using the approved dimmers

## OPTIONS



- **SF-3/8IP** = Locking Set Screw Swivel with  
3/8"IP x 3/8"IP Female Threads

\*Note: This option can only be used with Standard Pendant Kits

## Ordering Information

Model	Pendant Style/Length	Housing Finish*	Options
<b>CIP-4DC-LCT</b> = Ceiling Mount <b>CIP-4DP-LCT</b> = Pendant Mount	<i>Place Style <b>before</b> length</i> - = Standard Pendant - <b>S</b> = Swivel Mount Pendant <i>Pendant Lengths</i> <b>6</b> = 6 Inches <b>12</b> = 12 Inches <b>18</b> = 18 Inches <b>24</b> = 24 Inches <b>36</b> = 36 Inches <b>48</b> = 48 Inches <i>Cable and Cord Lengths</i> <b>C12</b> = 12 Inches <b>C24</b> = 24 Inches <b>C36</b> = 36 Inches <b>C50</b> = 50 Inches <b>C72</b> = 72 Inches <b>C120</b> = 120 Inches	<b>-WH</b> = White <b>-BK</b> = Black	<b>-EM</b> = Emergency Driver <b>-SF-3/8IP</b> = Locking Set Screw Swivel with 3/8"IP x 3/8"IP Female Threads

Example: **CIP-4DC-LCT-S-WH**

\* Consult factory for other Color Temperatures and Finishes