

## INTRODUCTION

## LED WALL BULKHEAD LIGHT

**Housing:** Die-casted Aluminum. Mounting Plate is sealed in place using molded, one piece high temperature silicone gasket.

**Electrical:** 25W LED luminaire, 30 total system watts, -30°C start temperature. Integral 120V through 277V electronic LED driver, Optional DC24V and 0-10V dimming or Triac Dimming.

**Note:** LEDs supplied with luminaire. Due to the dynamic nature of LED technology, LED luminaire data on this sheet is subject to change at the discretion of "GUBO". For the most current technical data, please refer to "GUBO".

**Finish:** Baking Finished in Black or White. Custom colors are available.

**Note:** CSA certified to U.S. and Canadian standards, suitable for wet locations. Protection class IP65.



Basic safety precautions should always be followed: READ AND FOLLOW ALL SAFETY INSTRUCTIONS

**WARNING:** This fixture is intended for installation in accordance with the National Electrical Code (NEC) and all local code specifications. If you are not familiar with code requirements, installation by a certified electrician is recommended.

Do not mount near heaters or hot surfaces.

**CLEANING:** Always be certain that electric current is turned off before cleaning. Only a damp cloth should be used. Harsh cleaning products may damage the finish.

The use of accessory equipment is not recommended by the manufacturer as it may cause an unsafe condition.

Do not use this equipment for other than its intended purpose.

If there is any broken, please should not use it.

## PRODUCT DIMENSION: [ UNIT: MM ]

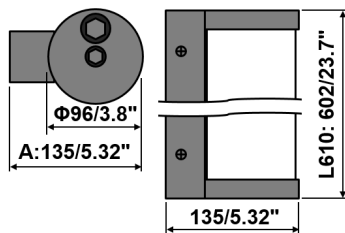


Fig.1

## Tools Required:

Philips screwdriver

Weight: 3.5kgs (7.47lbs)

## SPECIFICATION SHEET: Specify the item number from the label/mark on the product.

"T": The column 'T' in this chart indicates the temperature in degrees Celsius which is reached on the center of the glass surface during operation. Surface temperatures are for exterior applications, for interior applications add 10°C to temperatures shown.

"D": The column 'D' in this chart indicates the dimming type

"C": The column 'C' in this chart indicates the number of conductor of Flexible Cords.

NO.	ITEM	LED	INPUT	D	T	C
1.	GTG1208A-L610-30W-3000K	25W, 3000K	AC100~277V, 30W	NON	45°C	3C
2.	GTG1208A-L610-30W-4000K	25W, 4000K	AC100~277V, 30W	NON	45°C	3C
3.	GTG1208A-L610-30W-6000K	25W, 6000K	AC100~277V, 30W	NON	45°C	3C
4.	GTG1208A-L610-30W-3000K-CDT	25W, 3000K	AC100~277V, 30W	Triac	45°C	3C
5.	GTG1208A-L610-30W-3000K-CDV0	25W, 3000K	AC100~277V, 30W	0-10V	45°C	3C+2C
6.	GTG1208A-L610-30W-3000K-CDP-DC24V	25W, 3000K	DC24V, 36W	PWM	45°C	2C
7.	GTG1208A-L610-30W-TW-CDP-DC24V	25W, 2700K~6000K	DC24V, 36W	PWM	45°C	3C
8.	GTG1208A-L610-30W-RGB-CDP-DC24V	25W, RGB	DC24V, 36W	PWM	45°C	4C
	GTG1208A-L610-30W-RGBW-CDP-DC24V	25W, RGBW	DC24V, 36W	PWM	45°C	5C
	GTG1208A-L610-30W-RGBW-CDX	25W, RGBW	DC24V, 36W	DMX512	45°C	3C+2C

IP65, IK06,



## Installation:

1. Put the power cord inside your outlet box (Fig.2) in the installation position.

NOTE: The required length of power wire is minimum 150mm (Fig.3).

NOTE: Cores number as the list in "Specification sheet"

2. Split the Mounting Bracket (Fig.5) from the luminaire.

Loose four cross screw and take off the mounting bracket.(Fig.6)

3. Lead out the power cords through the center hole of the mounting bracket (Fig.7).

3. Fix the mounting bracket (Fig.6) to outlet box with the supplied mounting screws (Fig.8). The side edge must be flush with finished surface.

4. Make supply wiring and cable connections inside back box of the luminaire.(Fig.9)

**NOTE: Follow the signs to identify the wires on the luminaire.**

- (2.1) Grounding instructions: (See Fig4. A or B).

**A)** On fixtures where mounting strap is provided with a hole and two raised dimples.

Wrap ground wire from outlet box around green ground screw, and thread into hole.

**B)** On fixtures where a cupped washer is provided. Attach ground wire from outlet box under cupped washer and green ground screw, and thread into mounting strap. If fixture is provided with ground wire. Connect fixture ground wire to outlet box ground wire with wire connector. (Not provided.) After following the above steps. Never connect ground wire to black or white power supply wires.

- (2.2) INPUT AC100~277V POWER:

MAIN VOLTAGE SUPPLY WIRE: BLACK or BROWN LUMINAIRE WIRE

NEUTRAL (COMMON) SUPPLY WIRE: WHITE or BLUE LUMINAIRE WIRE

GREEN GROUND WIRE: GREEN/YELLOW LUMINAIRE WIRE

- (2.3)INPUT DC24V POWER for Single Color LED:

POSITIVE DRIVER WIRE (+): RED or Brown

NEGATIVE DRIVER WIRE (-): BLACK or BLUE

- (2.4)INPUT DC24V POWER for RGB(+) and RGBW(+):

POSITIVE DRIVER WIRE (+): BLACK.

RED LED WIRE (-): BROWN WIRE.

GREEN LED WIRE (-): GREEN/YELLOW WIRE.

BLUE LED WIRE (-): BLUE WIRE.

WHITE LED WIRE (-): PURPLE WIRE or WHITE WIRE.

- (2.5)INPUT DC24V POWER and DMX512 Signal:

POSITIVE DRIVER WIRE (+): BROWN WIRE

NEGATIVE DRIVER WIRE (-): BLUE WIRE

DMX512 Dimming Signal:

DIMMING SIGNAL CONTROL WIRE (+) : PURPLE WIRE

DIMMING SIGNAL CONTROL WIRE (-) : BLACK WIRE

DIMMING SIGNAL CONTROL WIRE (GND): YELLOW/GREEN WIRE

4. Install the luminaire.(Fig.5)

Tighten four cross crews from both side to the mounting bracket. The side edge of luminaire must be flush with mounting plate.

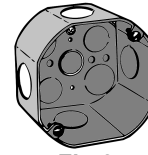


Fig.2

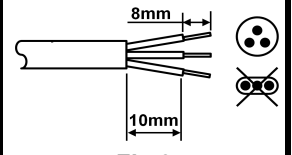


Fig.3

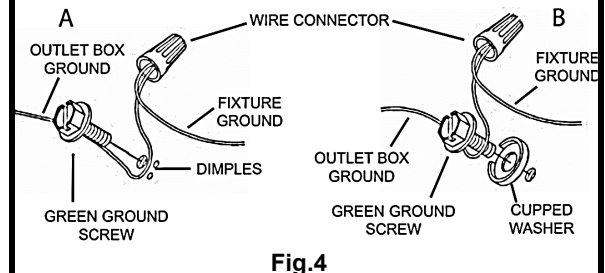


Fig.4

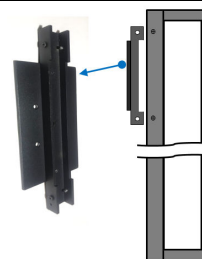


Fig.5



Fig.6

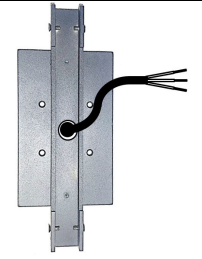


Fig.7

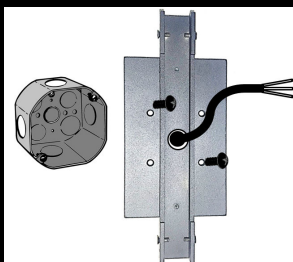


Fig.8



Fig.8