

## FEATURES:

- Extruded aluminum coated with white as standard.
- Flat PC lens or Drop lens.
- low-profile appearance.
- Class II/P driver, with 0-10V or Triac dimming.
- 50,000+ Hours LED Life Expectancy.
- Power factor: >0.92.
- White ,black, grey color for option
- Surface ,suspended available
- Driver disconnect provided where required to comply.
- 5 Year Warranty.
- Damp location.
- UL/cUL us listed.
- Ambient Temperature:-30 ~ 40 °C(-22° F to +104° F)
- Damp Location Rated
- Two types of lens offered for different scenario

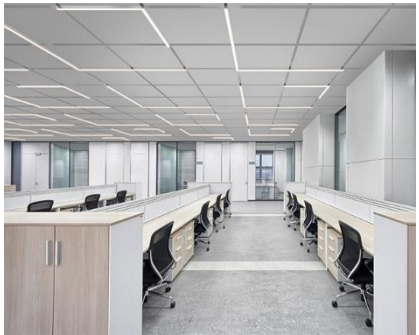
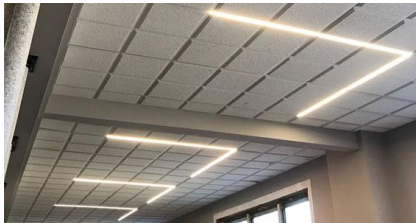
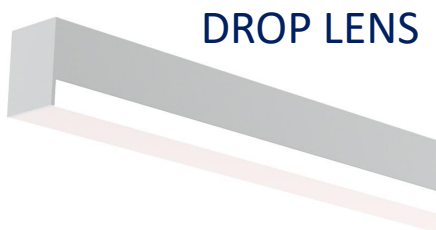
## APPLICATIONS:

Offices  
Conference rooms/Retail  
Reception areas/Hallways  
Education facilities  
T grid ceiling

FLAT LENS



DROP LENS



## Ordering information (standard)

Item	Watts	3CCT	Efficacy	Lumens	Dimension(L*W*H):mm/inch		
AR810T-LM-010-12-B-VK-D4-W	5-7.5W-10W	35/40/5 OK or 30/35/4 OK	115lm/w	500lm~ 1150lm	609mm 24"	26mm 1.0"	23mm 0.91"
AR811T-LM-020-14-B-VK-D4-W	10-15-20W		115lm/w	1000lm~ 2300lm	1219mm 48"	26mm 1.0"	23mm 0.91"
AR812T-LM-040-18-B-VK-D4-W	20-30-40W		115lm/w	2000lm~ 4600lm	2440mm 96"	26mm 1.0"	23mm 0.91"
AR810T-LM-020-22-B-VK-D4-W ( L corner 90 degree)	10-15-20W		115lm/w	1000lm~ 2300lm	609* 636mm 24"*25"	26mm 1.0"	23mm 0.91"

## ORDERING

Model	Color of Lens	Watts	Length	Mounting Method	CCT	Driver	Accessories
AR811T	LM - milky lens LD-Drop lens	010: 10W 020: 20W 040: 40W	12-2FT 14-4FT 18-8FT	B: Surface/ Suspended/R ecessed W: Wall	30:3000K 35:3500K 40:4000K 45:4500K 50:5000K VK:CCT Tunable	<b>D1</b> -120-277V <b>D2</b> -347V <b>D3</b> -120-347V <b>D4</b> -120-277V wattage selectable <b>D5</b> -120-347V wattage selectable <b>D6</b> -347-480V	<b>A</b> - no sensor & EM, <b>B</b> -with Sensor no EM, <b>C</b> - with EM no sensor, <b>D</b> with sensor and EM

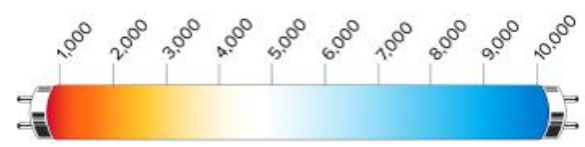
## CCT TUNABLE



3000K/3500K-Warm White

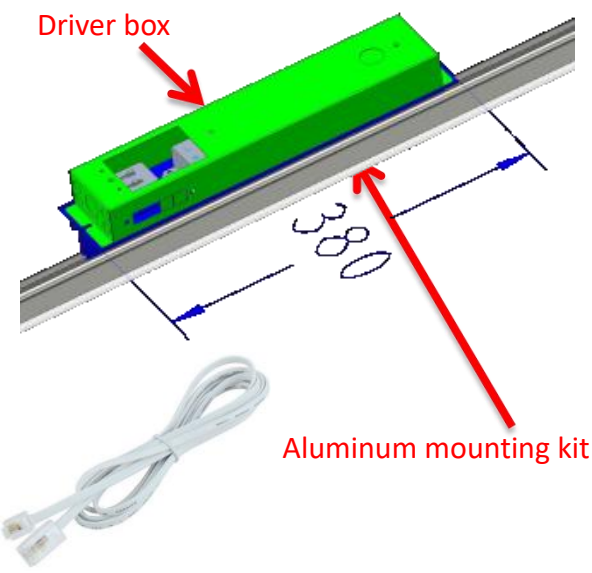
4000K-Nature White

5000K-Cold White

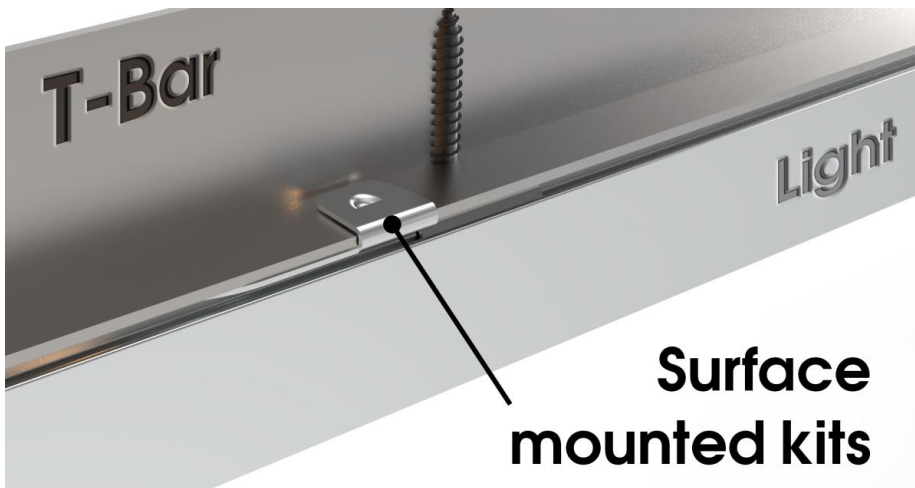
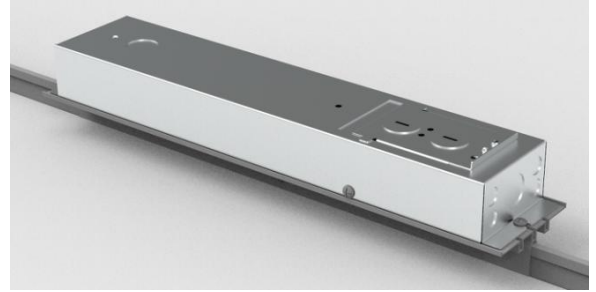
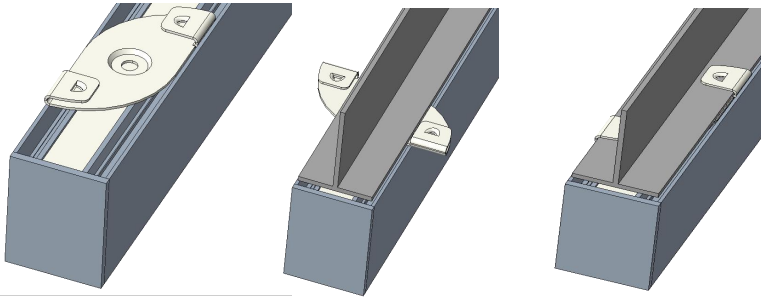


**Driver Supply, 2FT : 5W-10W 4FT: 10W-20W 8FT: 20-40W**

Driver Box	Size	Maximum	Mininum
40/60/80W driver box	4FT/2FT L	<a href="#">4pcs @80W</a>	4pcs @40W
	8FT	2pcs@80W	<a href="#">2pcs@40W</a>
20/30/40W driver box	2FT	<a href="#">4pcs @40W</a>	<a href="#">4pcs@20W</a>
	4FT/2FTL	<a href="#">4pcs@40W</a>	<a href="#">2pcs@20W</a>
	8FT	<a href="#">2pcs@40W</a>	<a href="#">1pcs@20W</a>



One fixture with maximum 4pcs RJ11 co  
Up lighting is maximum 3W per 2FOOT

**INSTALLATION-T Grid Mounted**

**Surface  
mounted kits**

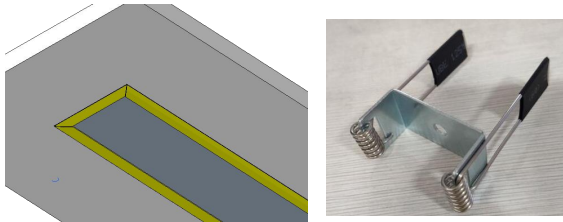
Snap the fixture with an extra clips into the T-grid with minimum labor, place the low voltage cable alongside the t grid and connect the individual Power supply which can connect 4 fixture maximum flexible to create pattern as below.

**No need to replace the existing T-grid**



**INSTALLATION-**

## Aluminum Recessed

Pendant with rod or  
Aircraft cable

## Pendant of different patterns

