

## NIKLAS W

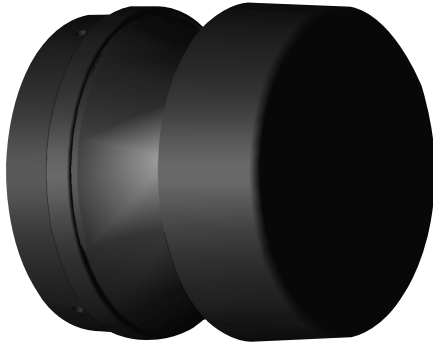
### AmberLED Deck/Wall Light

L70  
25°C

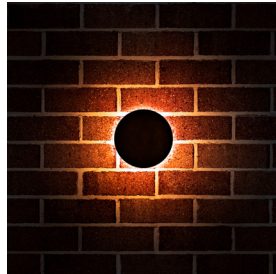
147,000 Hours



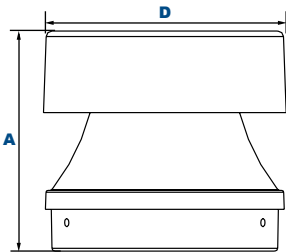
NIKLAS W  
Shown with 180° Shield



NIKLAS W  
Side View



NIKLAS W  
Shown Mounted



#### Dimensions

Diameter (D)	4 3/4" (120mm)
Height (A)	4 5/8" (117mm)

#### Project Information:

Project Name:	Fixture Type:
Complete Catalog #:	Date:
Comments:	

## AmberLED Technology

The LEPG AmberLED NIKLAS W Deck/Wall mount luminaries provide full cutoff lighting for outdoor path, walkways and landscape areas using wide spread optics designed for wildlife, dark skies, or security applications requiring monochromatic AMBER light. LEDs operate between 585 and 595 nm, greater than 560nm required for wildlife protection. When mounted on walls between 8 to 20 feet the fixture provides accent wall wash pattern illumination. These fixtures are ideal for landscaped areas at retail centers, restaurants, hotels, schools and universities, office buildings and medical facilities.

#### Specifications and Features:

##### Housing:

Die Cast Aluminum Housing with 1/2" NPS Coin Plug on Bottom, Sealed Driver Compartment. 360° Distribution, or 120° or 180° Shield.

##### Listing & Ratings:

ETL: Listed for Wet Locations, ANSI/UL 1598, 8750; IP66 Sealed LED Compartment.

##### Finish:

Textured Architectural Bronze or Black Powdercoat Finish Over a Chromate Conversion Coating. Custom Colors Available Upon Request.

##### Lens:

Clear UV-Stabilized Polycarbonate Vandal-Resistant Lens

##### Mounting Options:

Mount Over a 4" Recessed Outlet Box.

##### AmberLED:

Aluminum Boards

##### Wattage:

360° Arrays: 14w, System: 16.1w  
180° & 120° Arrays: 14w, System: 16.1w

##### Driver:

Electronic Driver, 120-277V, 50/60Hz; Less Than 20% THD and PF>0.90. Standard Internal Surge Protection 2kV. 0-10V Dimming Standard for a Dimming Range of 100% to 10%; Dimming Source Current is 150 Microamps.

##### Warranty:

5-Year Warranty for -40°C to +50°C Environment.

See Page 2 for Projected Lumen Maintenance Table.

## AmberLED

#### Certification & Listings:

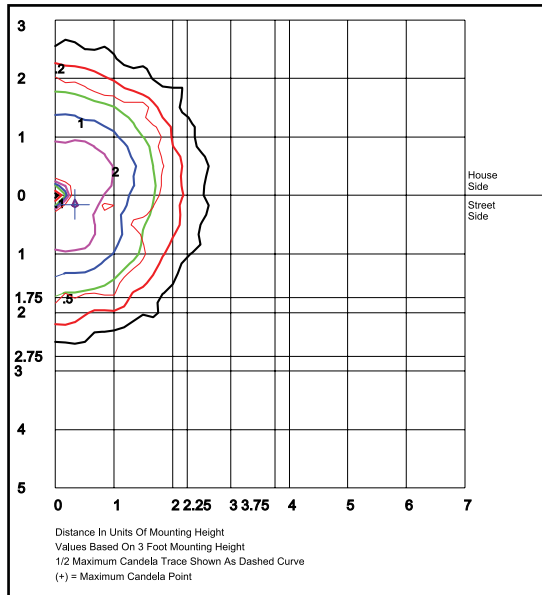


## Order Information Example:

NIKLAS W-1X14-U-AM-C-Z

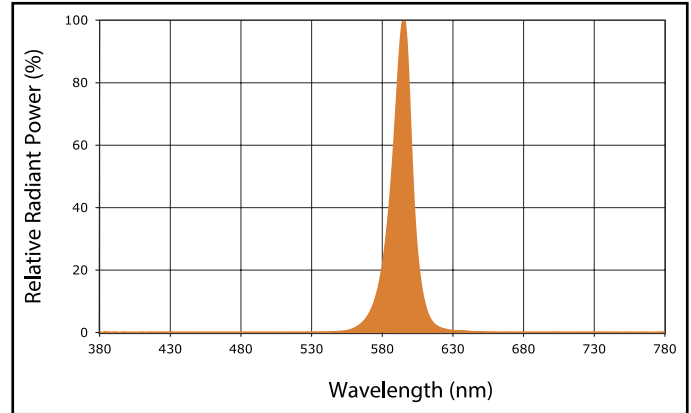
	U	AM	C	
Model	Driver	CCT	Lens	Color
<b>NIKLAS W-1X14</b> =Deck/Wall Mount - 360°, 14w <b>NIKLAS W2-1X14</b> =Deck/Wall Mount with 120° Shield, 14w <b>NIKLAS W3-1X14</b> =Deck/Wall Mount with 180° Shield, 14w	U=120-277V	AM=1400K	C=Clear UV-Stabilized Polycarbonate Vandal-Resistant Lens	Z=Bronze B=Black C=Custom (Consult Factory)

## Photometric Data



**NIKLAS W-1X14-U-AM**  
**360° Open - Clear Glass Lens**  
 Grid in feet, Mounting Height = 3 ft.

## Spectral Chart



## Photometric Performance

Wattage (Catalog Logic)		14W (1X14)
Input Watts		16.1W
Optic	CCT	Delivered Lumens
<b>360° DW50 Models</b> <b>F=Type V Optic</b>	Amber	192
	BUG Rating	B0-U1-G0

Wattage (Catalog Logic)		14W (1X14)
Input Watts		16.1W
Optic	CCT	Delivered Lumens
<b>180° DW5H Models</b> <b>F=Type V Optic</b>	Amber	136
	BUG Rating	B0-U1-G0

## Projected Lumen Maintenance

Data shown for Amber LEDs			Compare to MH			
TM-21-11	Input Watts	Initial	25,000 Hrs	50,000 Hrs	100,000 Hrs	Calculated LED Life
<b>L70 Lumen Maintenance @ 25°C / 77°F</b>	All wattages up to and including 14w	1.00	0.95	0.90	0.80	147,000
<b>L70 Lumen Maintenance @ 50°C / 122°F</b>		1.00	0.89	0.78	0.55	67,000
<b>L80 Lumen Maintenance @ 40°C / 104°F</b>		1.00	0.92	0.85	0.70	66,000

### NOTES:

- Projected per IESNA TM-21-11. Data references the extrapolated performance projections for the base model in a 25°C ambient, based on 10,000 hours of LED testing per IESNA LM-80-08.
- Compare to MH box indicates suggested Light Loss Factor (LLF) to be used when comparing to Metal Halide (MH) systems.