

INTRODUCTION

GTR1055A: LED RECESSED DOWNLIGHT

FEATURE

- Flip-down Modular Structure
- Optimized Antiglare Lighting Design (UGR≤16)
- Long Lifespan Design >50,000hours
- Working Temperature: -20℃~40℃

MATERIAL & FINISH

- LED Brand: LUMINUS & GUBO
- Remote Driver Brand: GUBO
- Housing: Aluminum Radiator Housing
- Optics: High Efficiency Clear PMMA Lens
- [F] Optics: Frosted PC Diffuser

INSTALLATION

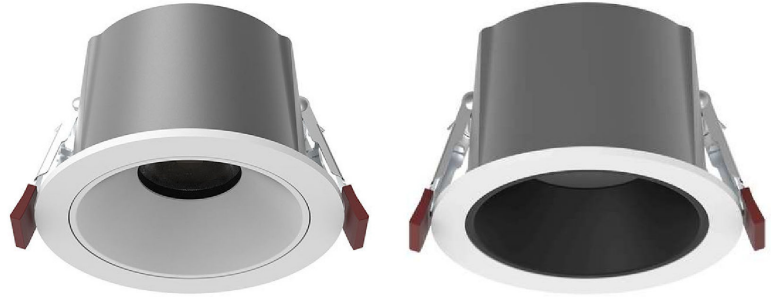
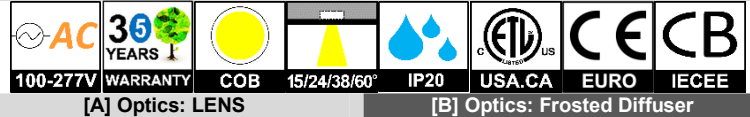
- False Ceiling Recessed
- Suitable for Interior Ceiling Light, like Hotel.....

STANDARD

- Designed and Manufactured to Comply with CE/RoHS/EMF/TUV/CB/SAA/Erp/cETL/FCC
- IP20 Protection, Class II Electric

OPTION

- LED CCT: 2000K/2700K/3500K/6500K
- [CRI]: [E] RA80, [G] RA90, [H] RA97
- Custom Housing Finish: Colors by RAL Code



F2: CUSTOM TRIM FINISH

WHITE RAL9010P	BLACK RAL9005P	GREY RAL7042P	DARK GREY RAL7016P	BRASS RAL1024P
-------------------	-------------------	------------------	-----------------------	-------------------

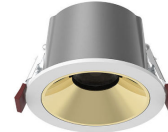
[F3GBKG] Baffle in Glossy Gun Black

[F3GCM] Baffle in Glossy Chrome

[F3GGDC] Baffle in Glossy Champagne Gold

F3: CUSTOM BAFFLE FINISH

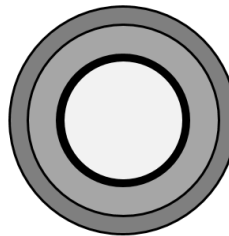
WHITE [F3MWT]	BLACK [F3MBK]	CHROME [F3GCM]	GUN BLACK [F3GBKG]	ROSE GOLD [F3GGDR]
------------------	------------------	-------------------	-----------------------	-----------------------



CASE STUDY



DIMENSION: [UNIT: MM]



MC75A: 56/2.3"	MC80A: 60/2.4"	MC95A: 65/2.6"	MC120A: 72/2.9"	MC145A: 82/3.3"	MC160A: 90/3.6"	MC200A: 100/4"
MC75A: Φ90/3.55"	MC80A: Φ95/3.74"	MC95A: Φ105/4.14"	MC120A: Φ130/5.12"	MC145A: Φ160/6.3"	MC160A: Φ180/7.1"	MC200A: Φ230/9.06"
[CUTOUT]	[Φ75/2.96"]	[Φ80/3.15"]	[Φ95/3.74"]	[Φ120/4.73"]	[Φ145/5.71"]	[Φ160/6.3"]
	[Φ200/7.88"]					

MODEL	POWER [W]	LED TYPE	CCT [K]	CRI [RA]	LUMEN [LM]	POWER FACTOR	BEAM ANGLE	CONTROL MODE	INPUT [V]
*GTR1055A-MC75A	*10W [7W]	CXM-6 LUMINUS COB	G2700K	RA90	670	>0.9			
			G3000K	RA90	700				
			G3500K	RA90	700				
			G4000K	RA90	730				
			G5000K	RA90	730				
2C@10W	18TWG	G2700K	G6000K	RA90	510	>0.9			
*GTR1055A-MC80A	*12W [10W]	CXM-6 LUMINUS COB	G2700K	RA90	800	>0.9			
			G3000K	RA90	840				
			G3500K	RA90	840				
			G4000K	RA90	880				
			G5000K	RA90	880				
2C@15W	18TWG	G2700K	G6000K	RA90	610	>0.9			
*GTR1055A-MC95A	*15W [12W] [10W]	CXM-6 LUMINUS COB	G2700K	RA90	930	>0.9			
			G3000K	RA90	980				
			G3500K	RA90	980				
			G4000K	RA90	1020				
			G5000K	RA90	1020				
2C@15W	18TWG	G2700K	G6000K	RA90	720	>0.9			
*GTR1055A-MC120A	*18W [15W] [12W]	CXM-9 LUMINUS COB	G2700K	RA90	1200	>0.9	[LENS] BL15D:15° *BL24D:24° BL38D:38° BL60D:60°		
			G3000K	RA90	1260				
			G3500K	RA90	1260				
			G4000K	RA90	1310				
			G5000K	RA90	1310				
2C@18W	24TWG	G2700K	G6000K	RA90	980	>0.9			
*GTR1055A-MC145A	*30W [25W] [20W]	CXM-14 LUMINUS COB	G2700K	RA90	2000	>0.9			
			G3000K	RA90	2100				
			G3500K	RA90	2100				
			G4000K	RA90	2180				
			G5000K	RA90	2180				
2C@30W	36TWG	G2700K	G6000K	RA90	1660	>0.9			
*GTR1055A-MC160A	*40W [35W] [30W] [20W]	CXM-14 LUMINUS COB	G2700K	RA90	2670	>0.9			
			G3000K	RA90	2800				
			G3500K	RA90	2800				
			G4000K	RA90	2920				
			G5000K	RA90	2920				
2C@40W	48TWG	G2700K	G6000K	RA90	2660	>0.9			
*GTR1055A-MC200A	*50W [40W] [35W] [30W]	CXM-18 LUMINUS COB	G2700K	RA90	3200	>0.9			
			G3000K	RA90	3360				
			G3500K	RA90	3360				
			G4000K	RA90	3500				
			G5000K	RA90	3500				
2C@50W	60TWG	G2700K	G6000K	RA90	3320	>0.9			

NOTE:

All parameters are measured at 25℃ ambient temperature, 35% humidity experimental environment. Tolerances of power and luminous flux are ±10%, tolerance of color rendering index is ±5.

SPECIFICATION (COB, RA97)

GTE1055A: LED RECESSED DOWNLIGHT

MODEL	POWER [W]	LED TYPE	CCT [K]	CRI [RA]	LUMEN [LM]	POWER FACTOR	BEAM ANGLE	CONTROL MODE	INPUT [V]
**GTR1055A-MC75A	**10W [7W]	CXM-6 LUMINUS COB	H2700K	RA97	580	>0.9	[LENS] BL15D:15° BL24D:24° BL38D:38° BL60D:60°	[*CDT]:TRIAC(10%) [CDV]:0~10V(7%) [*CDV0]:0~10V(1%) [CDV1]:1~10V(15%) [CDX]:DMX512(1%) [*CDA]:DALI(1%) [CDP]:PWM(1%) [CRZ]:ZIGBEE(1%) [CRB]:BLUETOOTH(1%) [*CRF]:2.4G RF(1%)	AC100~277V [AC220~240V] [AC100~240V] [AC100~347V] 50/60Hz
			H3000K	RA97	600				
			H3500K	RA97	600				
			H4000K	RA97	660				
			H5000K	RA97	660				
**GTR1055A-MC80A	**12W [10W]	CXM-6 LUMINUS COB	H2700K	RA97	700	>0.9			
			H3000K	RA97	720				
			H3500K	RA97	720				
			H4000K	RA97	790				
			H5000K	RA97	790				
**GTR1055A-MC95A	**15W [12W] [10W]	CXM-6 LUMINUS COB	H2700K	RA97	810	>0.9			
			H3000K	RA97	840				
			H3500K	RA97	840				
			H4000K	RA97	920				
			H5000K	RA97	920				
**GTR1055A-MC120A	*18W [15W] [12W]	CXM-9 LUMINUS COB	H2700K	RA97	1040	>0.9			
			H3000K	RA97	1080				
			H3500K	RA97	1080				
			H4000K	RA97	1190				
			H5000K	RA97	1190				
**GTR1055A-MC145A	*30W [25W] [20W]	CXM-14 LUMINUS COB	H2700K	RA97	1960	>0.9			
			H3000K	RA97	2040				
			H3500K	RA97	2040				
			H4000K	RA97	2250				
			H5000K	RA97	2250				
**GTR1055A-MC160A	*40W [35W] [30W] [20W]	CXM-14 LUMINUS COB	H2700K	RA97	2310	>0.9			
			H3000K	RA97	2400				
			H3500K	RA97	2400				
			H4000K	RA97	2650				
			H5000K	RA97	2650				
**GTR1055A-MC200A	*50W [40W] [*35W] [30W]	CXM-18 LUMINUS COB	H2700K	RA97	2770	>0.9			
			H3000K	RA97	2880				
			H3500K	RA97	2880				
			H4000K	RA97	3180				
			H5000K	RA97	3180				

NOTE:

All parameters are measured at 25°C ambient temperature, 35% humidity experimental environment. Tolerances of power and luminous flux are ±10%, tolerance of color rendering index is ±5.

MODEL	POWER [W]	LED TYPE	CCT [K]	LUMEN [LM]	POWER FACTOR	BEAM ANGLE	OPTIONAL DIMMING	INPUT [V]
**GTR1055A-MC75A	3C@6W	RGB	620nm 520nm 455nm	330	>0.6	[LENS] BL15D:15° BL24D:24° BL38D:38° BL60D:60°	[CDX]:DMX512(1%) [CDA]:DALI(1%) [CDP]:PWM(1%) [CRZ]:ZIGBEE(1%) [CRB]:BLUETOOTH(1%) [CRF]:2.4G RF(1%)	AC100~277V [AC220~240V] [AC100~240V] [AC100~347V] 50/60Hz
	4C@6W	RGBW	620nm 520nm 455nm G2700K	330	>0.5			
	5C@6W	RGBTW	620nm 520nm 455nm G2700K G6000K	330	>0.5			
**GTR1055A-MC80A	3C@15W	RGB	620nm 520nm 455nm	660	>0.7			
	4C@15W	RGBW	620nm 520nm 455nm G2700K	660	>0.5			
	5C@15W	RGBTW	620nm 520nm 455nm G2700K G6000K	660	>0.5			
**GTR1055A-MC95A	3C@18W	RGB	620nm 520nm 455nm	780	>0.7			
	4C@18W	RGBW	620nm 520nm 455nm G2700K	780	>0.6			
	5C@18W	RGBTW	620nm 520nm 455nm G2700K G6000K	780	>0.6			
**GTR1055A-MC120A	3C@20W	RGB	620nm 520nm 455nm	890	>0.7			
	4C@20W	RGBW	620nm 520nm 455nm G2700K	890	>0.5			
	5C@20W	RGBTW	620nm 520nm 455nm G2700K G6000K	890	>0.5			
**GTR1055A-MC145A	3C@25W	RGB	620nm 520nm 455nm	1100	>0.7			
	4C@25W	RGBWG	620nm 520nm 455nm G2700K	1100	>0.6			
	5C@25W	RGBTWG	620nm 520nm 455nm G2700K G6000K	1100	>0.6			

NOTE:

All parameters are measured at 25°C ambient temperature, 35% humidity experimental environment. Tolerances of power and luminous flux are ±10%, tolerance of color rendering index is ±5.

INTRODUCTION

GTR1055B: LED RECESSED DOWNLIGHT

FEATURE

- Flip-down Modular Structure
- Optimized Antiglare Lighting Design (UGR≤16)
- Long Lifespan Design >50,000hours
- Working Temperature: -20°C~40°C

MATERIAL & FINISH

- LED Brand: LUMINUS & GUBO
- Remote Driver Brand: GUBO
- Housing: Aluminum Radiator Housing
- Optics: High Efficiency Clear PMMA Lens
- [F] Optics: Frosted PC Diffuser

INSTALLATION

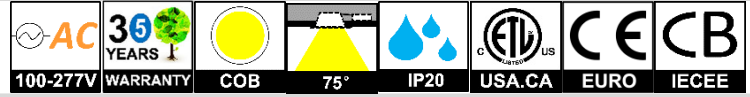
- False Ceiling Recessed
- Suitable for Interior Ceiling Light, like Hotel.....

STANDARD

- Designed and Manufactured to Comply with CE/RoHS/EMF/TUV/CB/SAA/Erp/cETL/FCC
- IP20 Protection, Class II Electric

OPTION

- LED CCT: 2000K/2700K/3500K/6500K
- [CRI]: [E] RA80, [G] RA90, [H] RA97
- Custom Housing Finish: Colors by RAL Code



[B] Optics: Frosted Diffuser



F2: CUSTOM TRIM FINISH

WHITE	BLACK	GREY	DARK GREY	BRASS
RAL9010P	RAL9005P	RAL7042P	RAL7016P	RAL1024P

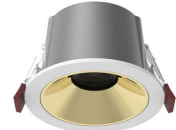
[F3GBKG] Baffle in Glossy Gun Black

[F3GCM] Baffle in Glossy Chrome

[F3GGDC] Baffle in Glossy Champagne Gold

F3: CUSTOM BAFFLE FINISH

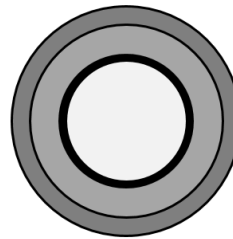
WHITE	BLACK	CHROME	GUN BLACK	ROSE GOLD
[F3MWT]	[F3MBK]	[F3GCM]	[F3GBKG]	[F3GGDR]



CASE STUDY



DIMENSION: [UNIT: MM]



MC75A: 56/2.3"	[CUTOUT]
MC80A: 60/2.4"	
MC95A: 65/2.6"	
MC120A: 72/2.9"	
MC145A: 82/3.3"	
MC160A: 90/3.6"	
MC200A: 100/4"	
MC75A: Φ90/3.55"	[Φ75/2.96"]
MC80A: Φ95/3.74"	[Φ80/3.15"]
MC95A: Φ105/4.14"	[Φ95/3.74"]
MC120A: Φ130/5.12"	[Φ120/4.73"]
MC145A: Φ160/6.3"	[Φ145/5.71"]
MC160A: Φ180/7.1"	[Φ160/6.3"]
MC200A: Φ230/9.06"	[Φ200/7.88"]

MODEL	POWER [W]	LED TYPE	CCT [K]	CRI	LUMEN [LM]	POWER FACTOR	BEAM ANGLE	OPTIONAL DIMMING	INPUT [V]
*GTR1055B-MC75A	*10W [7W]	48x0.5W SMD2835	G2700K	RA90	820	>0.9	[FROSTED] BDF:75°	[CDT]: TRIAC(10%) [CDV]: 0/1~10V(7%) [CDV0]: 0~10V(1%) [CDV1]: 1~10V(15%) [CDX]: DMX512(1%) [CDA]: DALI(1%) [CDP]: PWM(1%) [CRZ]: ZIGBEE(1%) [CRB]: BLUETOOTH(1%) [CRF]: 2.4G RF(1%)	AC100~277V [AC100~240V] [AC220~240V] [AC100~347V] 50/60Hz
			G3000K	RA90	860				
			G3500K	RA90	860				
			G4000K	RA90	920				
			G5000K	RA90	920				
			G6000K	RA90	920				
	2C@10W	TWG	G2700K G6000K	RA90	730	>0.7			
3C@10W	RGB	620nm 520nm 455nm	\	500	>0.7				
4C@10W	RGBWG	620nm 520nm 455nm G2700K	\	730	>0.6				
4C@10W	RGBA	620nm 520nm 455nm 590nm	\	500	>0.6				
5C@10W	RGBTWG	620nm 520nm 455nm G2700K G6000K	\	730	>0.4				
*GTR1055B-MC80A	*12W [10W]	60x0.5W SMD2835	G2700K	RA90	980	>0.9	[FROSTED] BDF:75°	[CDT]: TRIAC(10%) [CDV]: 0/1~10V(7%) [CDV0]: 0~10V(1%) [CDV1]: 1~10V(15%) [CDX]: DMX512(1%) [CDA]: DALI(1%) [CDP]: PWM(1%) [CRZ]: ZIGBEE(1%) [CRB]: BLUETOOTH(1%) [CRF]: 2.4G RF(1%)	AC100~277V [AC100~240V] [AC220~240V] [AC100~347V] 50/60Hz
			G3000K	RA90	1030				
			G3500K	RA90	1030				
			G4000K	RA90	1100				
			G5000K	RA90	1100				
			G6000K	RA90	1100				
	2C@12W	TWG	G2700K G6000K	RA90	880	>0.9			
4C@12W	RGB	620nm 520nm 455nm	\	600	>0.8				
5C@12W	RGBWG	620nm 520nm 455nm G2700K	\	880	>0.7				
4C@12W	RGBA	620nm 520nm 455nm 590nm	\	600	>0.6				
5C@12W	RGBTWG	620nm 520nm 455nm G2700K G6000K	\	880	>0.5				
*GTR1055B-MC95A	*15W [12W] [10W]	60x0.5W SMD2835	G2700K	RA90	1140	>0.9	[FROSTED] BDF:75°	[CDT]: TRIAC(10%) [CDV]: 0/1~10V(7%) [CDV0]: 0~10V(1%) [CDV1]: 1~10V(15%) [CDX]: DMX512(1%) [CDA]: DALI(1%) [CDP]: PWM(1%) [CRZ]: ZIGBEE(1%) [CRB]: BLUETOOTH(1%) [CRF]: 2.4G RF(1%)	AC100~277V [AC100~240V] [AC220~240V] [AC100~347V] 50/60Hz
			G3000K	RA90	1220				
			G3500K	RA90	1220				
			G4000K	RA90	1280				
			G5000K	RA90	1280				
			G6000K	RA90	1280				
	2C@15W	TWG	G2700K G6000K	RA90	980	>0.9			
3C@15W	RGB	620nm 520nm 455nm	\	660	>0.8				
4C@15W	RGBWG	620nm 520nm 455nm G2700K	\	980	>0.7				
4C@15W	RGBA	620nm 520nm 455nm 590nm	\	660	>0.6				
5C@15W	RGBTWG	620nm 520nm 455nm G2700K G6000K	\	980	>0.5				

NOTE:

All parameters are measured at 25°C ambient temperature, 35% humidity experimental environment. Tolerances of power and luminous flux are ±10%, tolerance of color rendering index is ±5.

SPECIFICATION

GTR1055B: LED RECESSED DOWNLIGHT

MODEL	POWER [W]	LED TYPE	CCT [K]	CRI	LUMEN [LM]	POWER FACTOR	BEAM ANGLE	OPTIONAL DIMMING	INPUT [V]
*GTR1055B-MC120A	*18W [15W] [12W]	72x0.5W SMD2835	G2700K	RA90	1470	>0.9			
			G3000K	RA90	1560				
			G3500K	RA90	1560				
			G4000K	RA90	1650				
			G5000K	RA90	1650				
	G6000K	RA90	1650						
	2C@18W	TWG	G2700K G6000K	RA90	1220	>0.9			
3C@18W	RGB	620nm 520nm 455nm	\	820	>0.8				
4C@18W	RGBWG	620nm 520nm 455nm G2700K	\	1220	>0.7				
4C@18W	RGBA	620nm 520nm 455nm 590nm	\	820	>0.6				
5C@18W	RGBTWG	620nm 520nm 455nm G2700K G6000K	\	1220	>0.5				
*GTR1055B-MC145A	*30W [25W] [20W]	180x0.5W SMD2835	G2700K	RA90	2450	>0.9			
			G3000K	RA90	2610				
			G3500K	RA90	2610				
			G4000K	RA90	2760				
			G5000K	RA90	2760				
	G6000K	RA90	2760						
	2C@30W	TWG	G2700K G6000K	RA90	2200	>0.9			
3C@30W	RGB	620nm 520nm 455nm	\	1480	>0.8				
4C@30W	RGBWG	620nm 520nm 455nm G2700K	\	2200	>0.7				
4C@30W	RGBA	620nm 520nm 455nm 590nm	\	1480	>0.7				
5C@30W	RGBTWG	620nm 520nm 455nm G2700K G6000K	\	2200	>0.6				
*GTR1055B-MC160A	*40W [*30W] [25W]	192x0.5W SMD2835	G2700K	RA90	3260	>0.9			
			G3000K	RA90	3470				
			G3500K	RA90	3470				
			G4000K	RA90	3670				
			G5000K	RA90	3670				
	G6000K	RA90	3670						
	2C@40W	TWG	G2700K G6000K	RA90	2940	>0.9			
3C@40W	RGB	620nm 520nm 455nm	\	1980	>0.8				
4C@40W	RGBWG	620nm 520nm 455nm G2700K	\	2940	>0.7				
4C@40W	RGBA	620nm 520nm 455nm 590nm	\	1980	>0.6				
5C@40W	RGBTWG	620nm 520nm 455nm G2700K G6000K	\	2940	>0.5				
*GTR1055B-MC200A	*50W [40W] [*30W]	240x0.5W SMD2835	G2700K	RA90	3920	>0.9			
			G3000K	RA90	4160				
			G3500K	RA90	4160				
			G4000K	RA90	4410				
			G5000K	RA90	4410				
	G6000K	RA90	4410						
	2C@50W	TWG	G2700K G6000K	RA90	3510	>0.9			
3C@50W	RGB	620nm 520nm 455nm	\	2840	>0.8				
4C@50W	RGBWG	620nm 520nm 455nm G2700K	\	3510	>0.7				
4C@50W	RGBA	620nm 520nm 455nm 590nm	\	2840	>0.7				
5C@50W	RGBTWG	620nm 520nm 455nm G2700K G6000K	\	3510	>0.6				

NOTE:

All parameters are measured at 25°C ambient temperature, 35% humidity experimental environment. Tolerances of power and luminous flux are ±10%, tolerance of color rendering index is ±5.

MODEL	POWER [W]	LED TYPE	CCT [K]	CRI	LUMEN [LM]	POWER FACTOR	BEAM ANGLE	OPTIONAL DIMMING	INPUT [V]
*GTR1055B-MC75B	**10W [7W]	48x0.5W SMD2835	H2700K	RA97	660	>0.9			
			H3000K	RA97	710				
			H3500K	RA97	710				
			H4000K	RA97	760				
			H5000K	RA97	760				
	H6000K	RA97	760						
+2C@10W	TWH	H2700K H6000K	RA97	600	>0.7				
+4C@10W	RGBWH	620nm 520nm 455nm H2700K	\	600	>0.6				
5C@10W	RGBTWH	620nm 520nm 455nm H2700K H6000K	\	600	>0.4				
*GTR1055B-MC80B	**12W [10W]	60x0.5W SMD2835	H2700K	RA97	790	>0.9	[FROSTED]		
			H3000K	RA97	850				
			H3500K	RA97	850				
			H4000K	RA97	910				
			H5000K	RA97	910				
	H6000K	RA97	910						
+2C@12W	TWH	H2700K H6000K	RA97	720	>0.9				
+4C@12W	RGBWH	620nm 520nm 455nm H2700K	\	720	>0.7				
5C@12W	RGBTWH	620nm 520nm 455nm H2700K H6000K	\	720	>0.5				
*GTR1055B-MC95A	**15W [12W] [10W]	60x0.5W SMD2835	H2700K	RA97	930	>0.9			
			H3000K	RA97	1000				
			H3500K	RA97	1000				
			H4000K	RA97	1070				
			H5000K	RA97	1070				
	H6000K	RA97	1070						
+2C@15W	TWH	H2700K H6000K	RA97	800	>0.9				
+4C@15W	RGBWH	620nm 520nm 455nm H2700K	\	800	>0.7				
5C@15W	RGBTWH	620nm 520nm 455nm H2700K H6000K	\	800	>0.6				

NOTE:

All parameters are measured at 25°C ambient temperature, 35% humidity experimental environment. Tolerances of power and luminous flux are ±10%, tolerance of color rendering index is ±5.

MODEL	POWER [W]	LED TYPE	CCT [K]	CRI	LUMEN [LM]	POWER FACTOR	BEAM ANGLE	OPTIONAL DIMMING	INPUT [V]
*GTR1055B-MC120A	**18W [15W] [12W]	72x0.5W SMD2835	H2700K	RA97	1190	>0.9	[FROSTED] BDF:75°	[CDT]:TRIAC(10%) [CDV]:0~10V(7%) [CDV0]:0~10V(1%) [CDV1]:1~10V(15%) [CDX]:DMX512(1%) [CDA]:DALI(1%) [CDP]:PWM(1%) [CRZ]:ZIGBEE(1%) [CRB]:BLUETOOTH(1%) [CRF]:2.4G RF(1%)	AC100~277V [AC100~240V] [AC220~240V] [AC100~347V] 50/60Hz
			H3000K	RA97	1280				
			H3500K	RA97	1280				
			H4000K	RA97	1380				
			H5000K	RA97	1380				
			H6000K	RA97	1380				
	+2C@18W	TWH	H2700K	H6000K	RA97	1000			
+4C@18W	RGBWH	620nm 520nm 455nm	H2700K	\	1000	>0.7			
5C@18W	RGBTWH	620nm 520nm 455nm	H2700K H6000K	\	1000	>0.5			
*GTR1055B-MC145A	**30W [25W] [20W]	180x0.5W SMD2835	H2700K	RA97	1990	>0.9	[FROSTED] BDF:75°	[CDT]:TRIAC(10%) [CDV]:0~10V(7%) [CDV0]:0~10V(1%) [CDV1]:1~10V(15%) [CDX]:DMX512(1%) [CDA]:DALI(1%) [CDP]:PWM(1%) [CRZ]:ZIGBEE(1%) [CRB]:BLUETOOTH(1%) [CRF]:2.4G RF(1%)	AC100~277V [AC100~240V] [AC220~240V] [AC100~347V] 50/60Hz
			H3000K	RA97	2140				
			H3500K	RA97	2140				
			H4000K	RA97	2300				
			H5000K	RA97	2300				
			H6000K	RA97	2300				
	+2C@30W	TWH	H2700K	H6000K	RA97	1800			
+4C@30W	RGBWH	620nm 520nm 455nm	H2700K	\	1800	>0.7			
5C@30W	RGBTWH	620nm 520nm 455nm	H2700K H6000K	\	1800	>0.6			
*GTR1055B-MC160A	**40W [30W] [25W]	192x0.5W SMD2835	H2700K	RA97	2650	>0.9	[FROSTED] BDF:75°	[CDT]:TRIAC(10%) [CDV]:0~10V(7%) [CDV0]:0~10V(1%) [CDV1]:1~10V(15%) [CDX]:DMX512(1%) [CDA]:DALI(1%) [CDP]:PWM(1%) [CRZ]:ZIGBEE(1%) [CRB]:BLUETOOTH(1%) [CRF]:2.4G RF(1%)	AC100~277V [AC100~240V] [AC220~240V] [AC100~347V] 50/60Hz
			H3000K	RA97	2860				
			H3500K	RA97	2860				
			H4000K	RA97	3060				
			H5000K	RA97	3060				
			H6000K	RA97	3060				
	+2C@40W	TWH	H2700K	H6000K	RA97	2400			
+4C@40W	RGBWH	620nm 520nm 455nm	H2700K	\	2400	>0.7			
5C@40W	RGBTWH	620nm 520nm 455nm	H2700K H6000K	\	2400	>0.5			
*GTR1055B-MC200A	**50W [40W] [30W]	240x0.5W SMD2835	H2700K	RA97	3180	>0.9	[FROSTED] BDF:75°	[CDT]:TRIAC(10%) [CDV]:0~10V(7%) [CDV0]:0~10V(1%) [CDV1]:1~10V(15%) [CDX]:DMX512(1%) [CDA]:DALI(1%) [CDP]:PWM(1%) [CRZ]:ZIGBEE(1%) [CRB]:BLUETOOTH(1%) [CRF]:2.4G RF(1%)	AC100~277V [AC100~240V] [AC220~240V] [AC100~347V] 50/60Hz
			H3000K	RA97	3430				
			H3500K	RA97	3430				
			H4000K	RA97	3670				
			H5000K	RA97	3670				
			H6000K	RA97	3670				
	+2C@50W	TWH	H2700K	H6000K	RA97	2850			
+4C@50W	RGBWH	620nm 520nm 455nm	H2700K	\	2850	>0.7			
5C@50W	RGBTWH	620nm 520nm 455nm	H2700K H6000K	\	2850	>0.6			

NOTE:

All parameters are measured at 25°C ambient temperature, 35% humidity experimental environment. Tolerances of power and luminous flux are ±10%, tolerance of color rendering index is ±5.