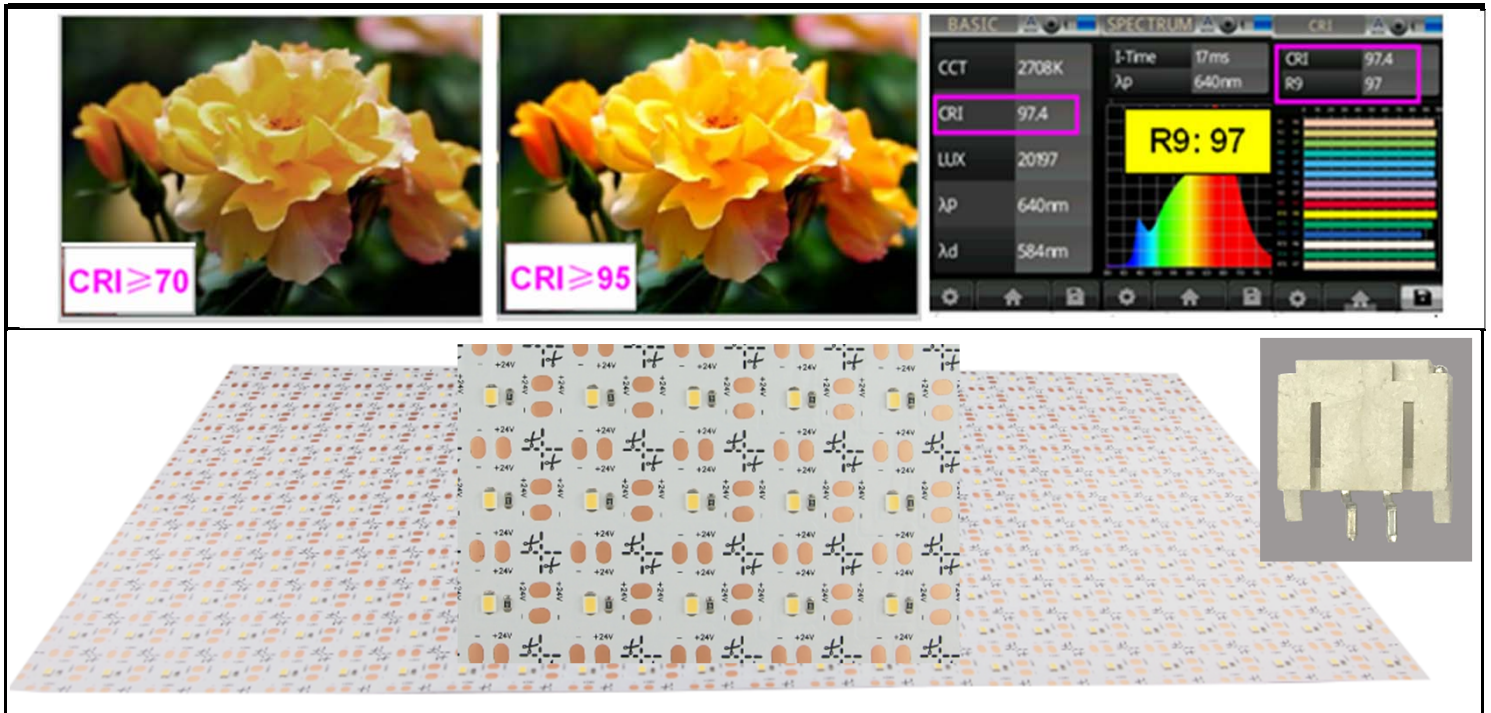


Specification Sheet for 1-LED-Cut SMD2835 Soft LED Board



Product features

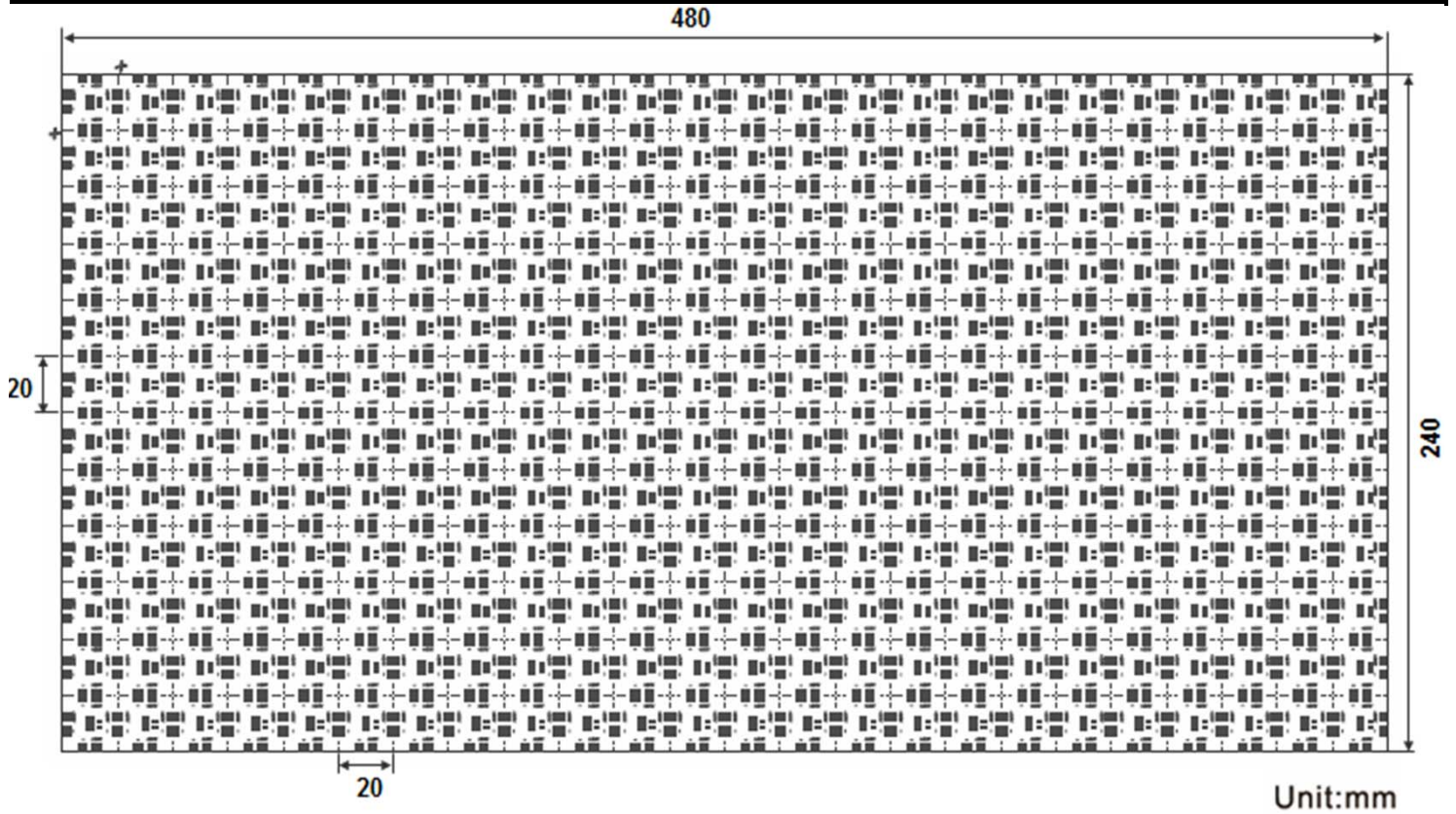
- ◆ Degree: 120 degree
- ◆ LED: SMD2835
- ◆ Constant Voltage
- ◆ Size: 480*240mm/pcs
- ◆ Power: 60W, 36W, 16W
- ◆ LED Qty: 288LED, 162LED, 72LED
- ◆ Voltage: DC24V
- ◆ Color: White
- ◆ Waterproof: IP20



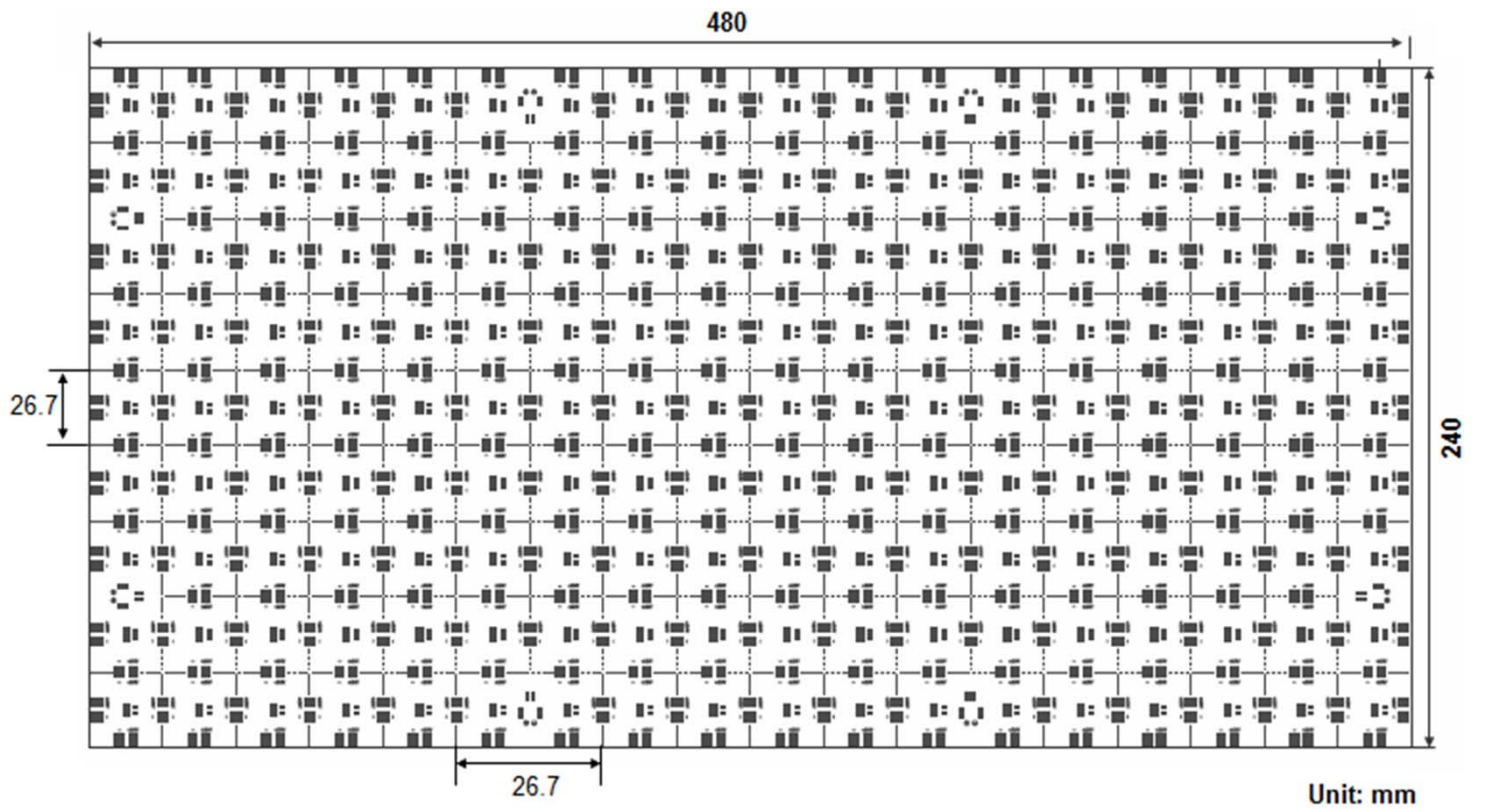
Specifications

Model No.	LED Qty/pcs	CC/CV	CRI	Work Voltage	Power	Size	Color	(CT:K)	Lumen (lm/pcs)
M2835A288-WW-24-951P	SMD 2835 288LED/PCS	CV Version	≥95	DC24V	60W/pcs	480*240 mm/pcs	<input type="checkbox"/> Warm White	2500-2700K	5800-5900
M2835A288-W-24-951P							<input type="checkbox"/> Warm White	3000-3200K	6000-6100
M2835A288-N-24-951P							<input type="checkbox"/> Nature White	4000-4300K	6100-6200
M2835A288-P-24-951P							<input type="checkbox"/> Pure White	6000-6500K	6200-6300
M2835A162-WW-24-951P	SMD 2835 162LED/PCS	CV Version	≥95	DC24V	36W/pcs	480*240 mm/pcs	<input type="checkbox"/> Warm White	2500-2700K	3000-3100
M2835A162-W-24-951P							<input type="checkbox"/> Warm White	3000-3200K	3100-3200
M2835A162-N-24-951P							<input type="checkbox"/> Nature White	4000-4300K	3200-3300
M2835A162-P-24-951P							<input type="checkbox"/> Pure White	6000-6500K	3300-3400
M2835A72-WW-24-951P	SMD 2835 72LED/PCS	CV Version	≥95	DC24V	16W/pcs	480*240 mm/pcs	<input type="checkbox"/> Warm White	2500-2700K	1400-1420
M2835A72-W-24-951P							<input type="checkbox"/> Warm White	3000-3200K	1420-1450
M2835A72-N-24-951P							<input type="checkbox"/> Nature White	4000-4300K	1450-1500
M2835A72-P-24-951P							<input type="checkbox"/> Pure White	6000-6500K	1500-1550

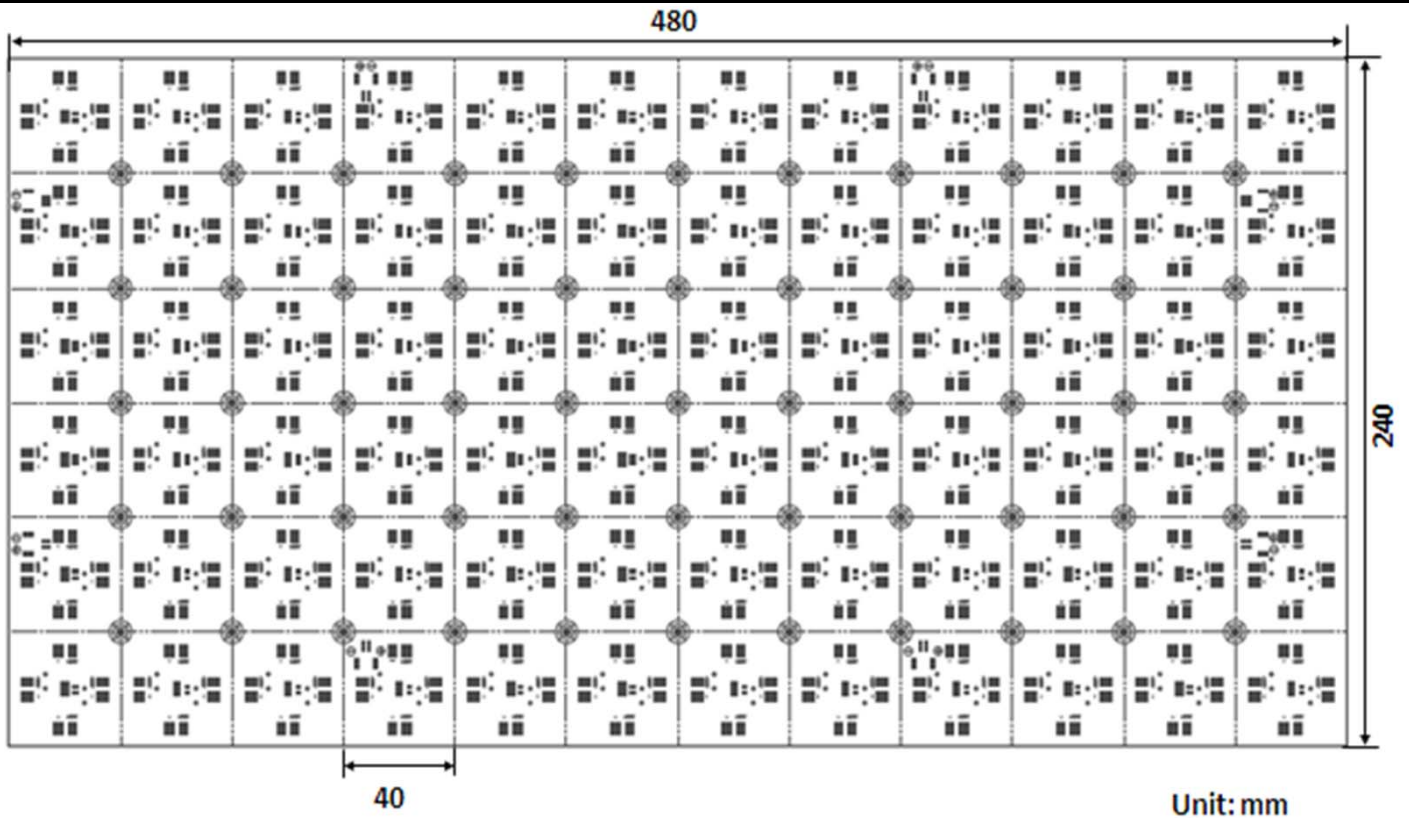
Dimensions of 288LED/pcs version



Dimensions of 162LED/pcs version



Dimensions of 72LED/pcs version



Notice:

Before application, please make sure the power supply is in accordance to the strips