

INTRODUCTION

GTR4421A: W20 MAGNETIC TRACK LED DOWNLIGHT

FEATURE

Anti-glare Uniform Lighting UGR≤16
 Long Lifespan Design>50,000Hours
 Working Temperature: -15°C~40°C

MAIN MATERIAL

LED BRAND: GUBO
 LED Driver Brand: GUBO
 Housing: Die-casted Aluminum
 Optics: High Efficiency Reflector
 Diffuser: Light-frosted PC Diffuser

INSTALLATION

W20 Magnetic Track Slotted
 Suitable for Interior Lighting

STANDARD

Designed and Manufactured to Comply with
 CE/RoHS/EMF/TUV/SAA/Erp/cETL/FCC
 IP20 Protection, Class III Electric

OPTION

LED CCT: 1,800K~10,000K/R/G/B/Y
 [CRI]: [E] RA80, [G] RA90, [H] RA97
 Custom Housing Finished Color:

F1 Custom Housing Finished Color:

MATT WHITE [HMWT] MATT BLACK [HMBK]

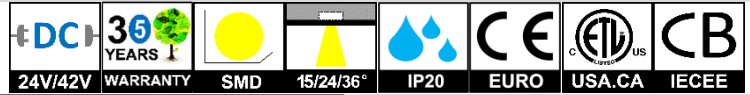


F3 Custom Baffle Finish:

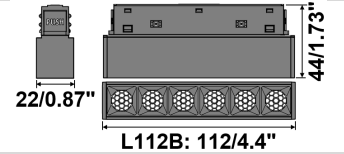
WHITE [F3MWT] BLACK [F3MBK] GUN BLACK [F3GBKG]



CASE STUDY:

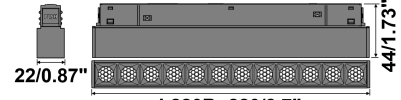


(L110B) DIMENSION: [UNIT: MM]



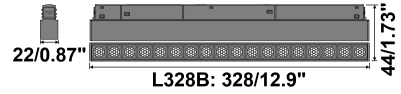
L112B: 112/4.4"

(L220B) DIMENSION: [UNIT: MM]



L220B: 220/8.7"

(L328B) DIMENSION: [UNIT: MM]



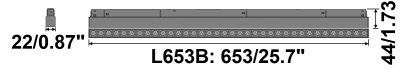
L328B: 328/12.9"

(L438B) DIMENSION: [UNIT: MM]



L438B: 438/17.3"

(L653B) DIMENSION: [UNIT: MM]



L653B: 653/25.7"


| MODEL | POWER [W] | LED TYPE | CCT [K] | CRI | FLUX [LM] | POWER FACTOR | BEAM ANGLE | REMOTE CONTROL | INPUT [V] |
|----------------|-----------|---------------|---------|--------|-----------|--------------|--|--|--|
| GTR4421A-L110B | 6W | 6x2W SMD3030 | G2700K | RA90 | 480 | >0.5 | BL24D:24° [BL15D:15°] [BL36D:36°] [BGL] LOUVER LM-20% | [CDP]:PWM(1%) [REMOTE DRIVER] [CDT]:TRIAC(10%) [CDV]:0/1~10V(8%) [CDV0]:0~10V(1%) [CDV1]:1~10V(10%) [CDX]:DMX512(1%) [CDA]:DALI(1%) [CRZ]:ZIGBEE(1%) [CRF]:2.4GRF(1%) | CV DC24V [CV DC42V] [REMOTE DRIVER] AC110~277V [AC100~240V] [AC220~240V] [AC100~347V] 50/60Hz |
| | | | G3000K | RA90 | 540 | | | | |
| | | | G3500K | RA90 | 540 | | | | |
| | | | G4000K | RA90 | 570 | | | | |
| | | | G5000K | RA90 | 570 | | | | |
| | | | G6000K | RA90 | 540 | | | | |
| | | | H2700K | RA97 | 390 | | | | |
| | | | H3000K | RA97 | 420 | | | | |
| | | | H3500K | RA97 | 420 | | | | |
| | | | H4000K | RA97 | 450 | | | | |
| GTR4421A-L220B | 12W | 12x2W SMD3030 | G2700K | RA90 | 960 | >0.5 | BL24D:24° [BL15D:15°] [BL36D:36°] [BGL] LOUVER LM-20% | [CDP]:PWM(1%) [REMOTE DRIVER] [CDT]:TRIAC(10%) [CDV]:0/1~10V(8%) [CDV0]:0~10V(1%) [CDV1]:1~10V(10%) [CDX]:DMX512(1%) [CDA]:DALI(1%) [CRZ]:ZIGBEE(1%) [CRF]:2.4GRF(1%) | CV DC24V [CV DC42V] [REMOTE DRIVER] AC110~277V [AC100~240V] [AC220~240V] [AC100~347V] 50/60Hz |
| | | | G3000K | RA90 | 1080 | | | | |
| | | | G3500K | RA90 | 1080 | | | | |
| | | | G4000K | RA90 | 1140 | | | | |
| | | | G5000K | RA90 | 1140 | | | | |
| | | | G6000K | RA90 | 1080 | | | | |
| | | | H2700K | RA97 | 780 | | | | |
| | | | H3000K | RA97 | 840 | | | | |
| | | | H3500K | RA97 | 840 | | | | |
| | | | H4000K | RA97 | 900 | | | | |
| GTR4421A-L220B | 2C@6W | TWH | H2700K | H6000K | RA97 | 390 | >0.5 | | |
| | | | G2700K | RA90 | 960 | >0.5 | BL24D:24° [BL15D:15°] [BL36D:36°] [BGL] LOUVER LM-20% | [CDP]:PWM(1%) [REMOTE DRIVER] [CDT]:TRIAC(10%) [CDV]:0/1~10V(8%) [CDV0]:0~10V(1%) [CDV1]:1~10V(10%) [CDX]:DMX512(1%) [CDA]:DALI(1%) [CRZ]:ZIGBEE(1%) [CRF]:2.4GRF(1%) | CV DC24V [CV DC42V] [REMOTE DRIVER] AC110~277V [AC100~240V] [AC220~240V] [AC100~347V] 50/60Hz |
| | | | G3000K | RA90 | 1080 | | | | |
| | | | G3500K | RA90 | 1080 | | | | |
| G4000K | RA90 | 1140 | | | | | | | |
| GTR4421A-L220B | 2C@12W | TWH | H2700K | H6000K | RA97 | 780 | >0.5 | | |
| | | | G2700K | RA90 | 960 | >0.5 | BL24D:24° [BL15D:15°] [BL36D:36°] [BGL] LOUVER LM-20% | [CDP]:PWM(1%) [REMOTE DRIVER] [CDT]:TRIAC(10%) [CDV]:0/1~10V(8%) [CDV0]:0~10V(1%) [CDV1]:1~10V(10%) [CDX]:DMX512(1%) [CDA]:DALI(1%) [CRZ]:ZIGBEE(1%) [CRF]:2.4GRF(1%) | CV DC24V [CV DC42V] [REMOTE DRIVER] AC110~277V [AC100~240V] [AC220~240V] [AC100~347V] 50/60Hz |
| | | | G3000K | RA90 | 1080 | | | | |
| | | | G3500K | RA90 | 1080 | | | | |
| | | | G4000K | RA90 | 1140 | | | | |
| | | | G5000K | RA90 | 1140 | | | | |
| | | | G6000K | RA90 | 1080 | | | | |
| | | | H2700K | RA97 | 780 | | | | |
| | | | H3000K | RA97 | 840 | | | | |
| | | | H3500K | RA97 | 840 | | | | |
| H4000K | RA97 | 900 | | | | | | | |

NOTE:

All parameters are measured at 25°C ambient temperature, 35% humidity experimental environment.
 Tolerances of power and luminous flux are ±10%, tolerance of color rendering index is ±3.


SPECIFICATION SHEET

GTR4421A: W20 MAGNETIC TRACK LED DOWNLIGHT

| MODEL | POWER [W] | LED TYPE | CCT [K] | CRI | FLUX [LM] | POWER FACTOR | BEAM ANGLE | REMOTE CONTROL | INPUT [V] |
|-----------------------|-----------|------------------|---------|------|-----------|--------------|---|--|--|
| GTR4421A-L328B | 18W | 18x2W SMD3030 | G2700K | RA90 | 1440 | > 0.5 | BL24D:24° [BL15D:15°] [BL36D:36°] [BGL] LOUVER LM-20%  | [CDP]:PWM(1%) [REMOTE DRIVER] [CDT]:TRIAC(10%) [CDV]:0/1~10V(8%) [CDV0]:0~10V(1%) [CDV1]:1~10V(10%) [CDX]:DMX512(1%) [CDA]:DALI(1%) [CRZ]:ZIGBEE(1%) [CRF]:2.4GRF(1%) | CV DC24V [CV DC42V] [REMOTE DRIVER] AC110~277V [AC100~240V] [AC220~240V] [AC100~347V] 50/60Hz |
| | | | G3000K | RA90 | 1620 | | | | |
| | | | G3500K | RA90 | 1620 | | | | |
| | | | G4000K | RA90 | 1710 | | | | |
| | | | G5000K | RA90 | 1710 | | | | |
| | | | G6000K | RA90 | 1620 | | | | |
| | | | H2700K | RA97 | 1170 | | | | |
| | | | H3000K | RA97 | 1260 | | | | |
| | | | H3500K | RA97 | 1260 | | | | |
| | | | H4000K | RA97 | 1350 | | | | |
| | | | H5000K | RA97 | 1350 | | | | |
| | H6000K | RA97 | 1260 | | | | | | |
| 2C@18W | TWH | H2700K | H6000K | RA97 | 1170 | > 0.5 | | | |


NOTE:

All parameters are measured at 25°C ambient temperature, 35% humidity experimental environment.
Tolerances of power and luminous flux are ±10%, tolerance of color rendering index is ±3.

| MODEL | POWER [W] | LED TYPE | CCT [K] | CRI | FLUX [LM] | POWER FACTOR | BEAM ANGLE | REMOTE CONTROL | INPUT [V] |
|-----------------------|-----------|------------------|---------|------|-----------|--------------|---|--|--|
| GTR4421A-L438B | 24W | 24x2W SMD3030 | G2700K | RA90 | 1920 | > 0.5 | BL24D:24° [BL15D:15°] [BL36D:36°] [BGL] LOUVER LM-20%  | [CDP]:PWM(1%) [REMOTE DRIVER] [CDT]:TRIAC(10%) [CDV]:0/1~10V(8%) [CDV0]:0~10V(1%) [CDV1]:1~10V(10%) [CDX]:DMX512(1%) [CDA]:DALI(1%) [CRZ]:ZIGBEE(1%) [CRF]:2.4GRF(1%) | CV DC24V [CV DC42V] [REMOTE DRIVER] AC110~277V [AC100~240V] [AC220~240V] [AC100~347V] 50/60Hz |
| | | | G3000K | RA90 | 2160 | | | | |
| | | | G3500K | RA90 | 2160 | | | | |
| | | | G4000K | RA90 | 2280 | | | | |
| | | | G5000K | RA90 | 2280 | | | | |
| | | | G6000K | RA90 | 2160 | | | | |
| | | | H2700K | RA97 | 1560 | | | | |
| | | | H3000K | RA97 | 1680 | | | | |
| | | | H3500K | RA97 | 1680 | | | | |
| | | | H4000K | RA97 | 1800 | | | | |
| | | | H5000K | RA97 | 1800 | | | | |
| | H6000K | RA97 | 1680 | | | | | | |
| 2C@24W | TWH | H2700K | H6000K | RA97 | 1560 | > 0.5 | | | |

NOTE:

All parameters are measured at 25°C ambient temperature, 35% humidity experimental environment.
Tolerances of power and luminous flux are ±10%, tolerance of color rendering index is ±3.

| MODEL | POWER [W] | LED TYPE | CCT [K] | CRI | FLUX [LM] | POWER FACTOR | BEAM ANGLE | REMOTE CONTROL | INPUT [V] |
|-----------------------|-----------|------------------|---------|------|-----------|--------------|---|--|--|
| GTR4421A-L653B | 36W | 36x2W SMD3030 | G2700K | RA90 | 2880 | > 0.5 | BL24D:24° [BL15D:15°] [BL36D:36°] [BGL] LOUVER LM-20%  | [CDP]:PWM(1%) [REMOTE DRIVER] [CDT]:TRIAC(10%) [CDV]:0/1~10V(8%) [CDV0]:0~10V(1%) [CDV1]:1~10V(10%) [CDX]:DMX512(1%) [CDA]:DALI(1%) [CRZ]:ZIGBEE(1%) [CRF]:2.4GRF(1%) | CV DC24V [CV DC42V] [REMOTE DRIVER] AC110~277V [AC100~240V] [AC220~240V] [AC100~347V] 50/60Hz |
| | | | G3000K | RA90 | 3240 | | | | |
| | | | G3500K | RA90 | 3240 | | | | |
| | | | G4000K | RA90 | 3420 | | | | |
| | | | G5000K | RA90 | 3420 | | | | |
| | | | G6000K | RA90 | 3240 | | | | |
| | | | H2700K | RA97 | 2340 | | | | |
| | | | H3000K | RA97 | 2620 | | | | |
| | | | H3500K | RA97 | 2620 | | | | |
| | | | H4000K | RA97 | 2700 | | | | |
| | | | H5000K | RA97 | 2700 | | | | |
| | H6000K | RA97 | 2620 | | | | | | |
| 2C@36W | TWH | H2700K | H6000K | RA97 | 2340 | > 0.5 | | | |

NOTE:

All parameters are measured at 25°C ambient temperature, 35% humidity experimental environment.
Tolerances of power and luminous flux are ±10%, tolerance of color rendering index is ±3.