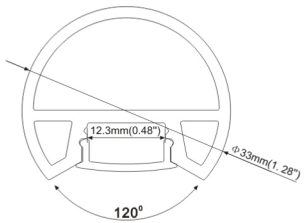


Common Series

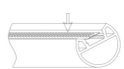
ALP077



- PMMA opal matte cover
- PMMA semi-clear cover
- PMMA clear cover
- PC diffused cover



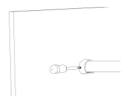
End caps



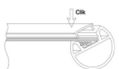
Step 01:
Stick led strip



Step 03:
Lock the end caps
inside the cabinet



Step 05:
Fix the Aluminium profile



Step 02:
Push the diffuser inside



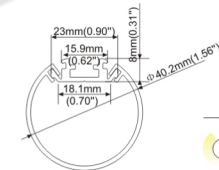
Step 04:
Slide the cover plates



Step 06:
Installation completed

Common Series

T40



- PC frosted cover

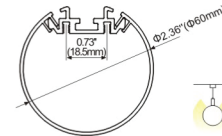


End cap



Steel wire

T60



- PC frosted cover

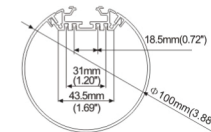


End cap



Steel wire

T100



- PC frosted cover



End Cap



Outside clip

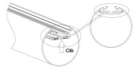


Steel wire

Common Series

T100

Installation methods



Step 01:
Install the diffuser



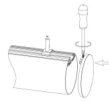
Step 03:
Fasten the base of
the steel wire



Step 05:
Fix the steel wire



Step 02:
Fix the external clip



Step 04:
Install the end caps

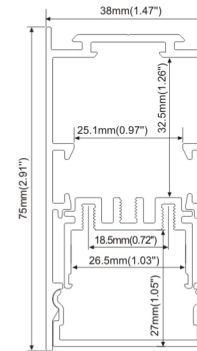


Step 06:
Installation completed



Common Series

ALP3875-R



• PC frosted cover



Die cast end caps



Inside clip



Outside clip



Steel wire



Safety wire