

## B11QQ

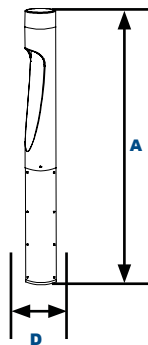
L70  
25°C

147,000 Hours

### Side Light Bollard



Shown with GFCI



#### Dimensions

Diameter (D)	4¾" (120mm)
Height (A)	43¼" (1100mm)

The B11QQ Side Light Bollard provides full cutoff lighting for outdoor path, walkways and landscape areas using asymmetric optics designed to replace outdated Halogen and Compact Fluorescent lighting systems. These fixtures are ideal for retail centers, industrial parks, schools and universities, public transit and airports, office buildings and medical facilities.

#### Specifications and Features:

##### Housing:

Cast and Extruded Aluminum Housing with Flush Mounting Base, Flat Top.

##### Listing & Ratings:

ETL: Listed for Wet Locations, ANSI/UL 1598, 8750; IP66 Sealed LED Compartment.

##### Finish:

Textured Architectural Powdercoat Finish Over a Chromate Conversion Coating. Custom Colors Available Upon Request.

##### Lens:

Clear UV-Stabilized Polycarbonate Vandal-Resistant Lens

##### Mounting Options:

Mounting Kit with 8" Zinc-Plated Anchor Bolts, Included.

##### EasyLED LED:

Aluminum Boards

##### Wattage:

18w: Array: 18w, System: 20.5w

##### Driver:

Electronic Driver, 120-277V, 50/60Hz; Less Than 20% THD and PF>0.90. Standard Internal Surge Protection 2kV. 0-10V Dimming Standard for a Dimming Range of 100% to 10%; Dimming Source Current is 150 Microamps.

##### Warranty:

5-Year Warranty for -40°C to +50°C Environment.

See Page 3 for Projected Lumen Maintenance Table.

#### Project Information:

Project Name:	Fixture Type:
Complete Catalog #:	Date:
Comments:	

#### Certification & Listings:



### Order Information Example:

B11QF1X18U4KCZSP

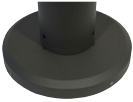
B11QQ	F	1X18	U		C		
Model	Optics	Wattage	Driver	CCT	Lens	Color	Options
B11QQ=EasyLED Side Light Bollard	F=Asymmetric	1X18=18w	U=120-277V	3K=3000K 4K=4000K 5K=5000K	C=Clear Molded UV-Stabilized Polycarbonate Lens	Z=Bronze B=Black P=Platinum C=Custom (Consult Factory)	SF=Single Fuse* DF=Double Fuse* SP=Surge Protection GF1=GFCI Outlet, 15A, 120V *120-277V Models Only.

### Accessories & Replacement Parts:

#### Mounting Accessories (Order Separately, Field Installed)

**BREBASE\*** Bollard Retrofit Base Kit Adapts New Bollards to Most Existing Bolt Patterns. Fits all LEPG Bollards. Die Cast with Powdercoat Finish, Hardware Included. 1 1/2" Dia. x 1 1/2" H

\*Specify Color: Z=Bronze, B=Black, P=Platinum, C=Custom (Consult Factory)

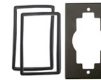


**BREBASE\***

\*Shown Mounted

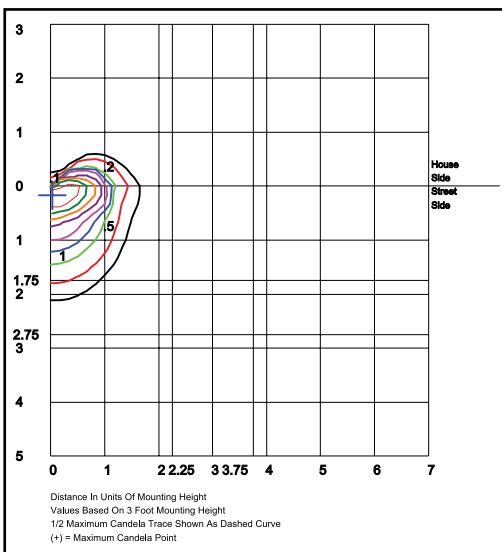
#### Replacement Parts (Order Separately, Field Installed)

**BOADP1** Adapter Plate with Gaskets for Outlet Boxes. Fits Atlantic Round Bollards. Die Cast with Bronze Powdercoat Finish.



**BOADP1**

### Photometric Data



**B11QQF1X18U5KC**

Grid in feet, Mounting Height = 3 ft.



# B11QQ Side Light Bollard

L70  
25°C

147,000 Hours

## Photometric Performance

Wattage (Catalog Logic)		18W (1X18)
Input Watts		20.5W
Optic	CCT	Delivered Lumens
F=Asymmetric	3000K	311
	4000K	324
	5000K	337
	BUG Rating	B0-U0-G0

## Projected Lumen Maintenance

Data shown for 5000 CCT		Compare to MH				
TM-21-11	Input Watts	Initial	25,000 Hrs	50,000 Hrs	100,000 Hrs	Calculated LED Life
L70 Lumen Maintenance @ 25°C / 77°F	All wattages up to and including 18w	1.00	0.95	0.90	0.80	147,000
L70 Lumen Maintenance @ 50°C / 122°F		1.00	0.89	0.78	0.55	67,000
L80 Lumen Maintenance @ 40°C / 104°F		1.00	0.92	0.85	0.70	66,000

### NOTES:

1. Projected per IESNA TM-21-11. Data references the extrapolated performance projections for the base model in a 25°C ambient, based on 10,000 hours of LED testing per IESNA LM-80-08.
2. Compare to MH box indicates suggested Light Loss Factor (LLF) to be used when comparing to Metal Halide (MH) systems.