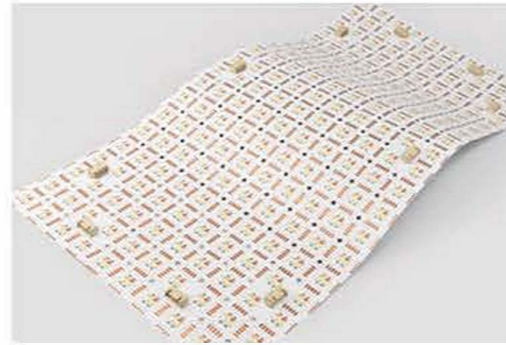


LED SHEET RGBW 800

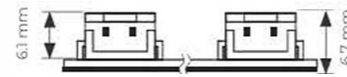
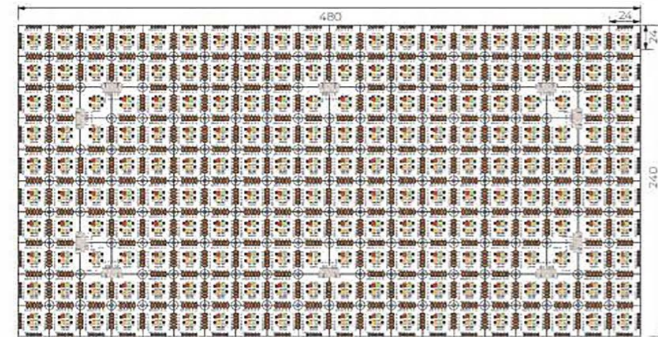
800-240MM



RGBW flexible LED Sheet is a fully modular and cuttable lights for backlighting applications. Suitable for large-area light source laying. Along the cutting line, you can cut the LED sheet in three directions: horizontal cutting, vertical cutting, and diagonal cutting. Quick connector cable easily connect LED sheets.



Dimension



Connector Height



Unit: mm
Cross section

Technical Data

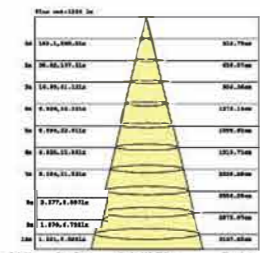
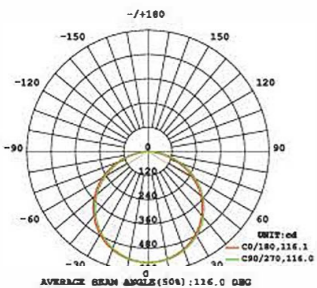
Model No.	CIP-SK-ST2Q800V24-Crgbw
Input voltage	DC24V
CRI(Ra)	>90
Lm/w@RGBW	49
Beam angle	120°
LED Chips/pcs	800LEDs
LONG-life LED	50000h
Working temperature	-25 C ~+45 C
Cuttable length(mm)	48X48

Voltage
24v DC

3-Step
MacAdam

Consistency
One Bin

Warranty
5 Years

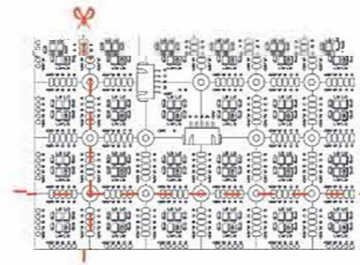


Note: The Curves indicate the Illuminated area and the average illuminance when the luminance is at different distance.

CCT (K)	Power (W/PCS)	Lumen (LM/M)	Max.run Sheets (PCS)	CV/CC
R	8	136	6	CV
G	8	548	6	CV
B	8	252	6	CV
W	8	640	6	CV
RGBW	32	1568	6	CV

*CV: Constant Voltage, CC: Constant Current.

Cutting Mark



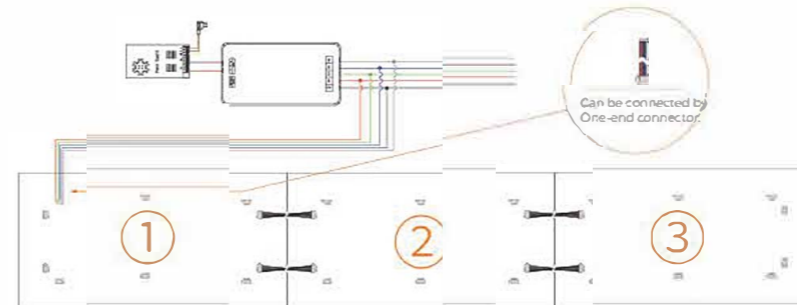
As shown in the figure, horizontal cutting, vertical cutting can be carried out along the lines on the panel. When cutting, do not cut components by mistake.

Connection Diagram

Connection of Plate:



Single Power Supply Point:



Series Connection:



⚠ The maximum overload current of the PH terminal is 5A. A single power supply point carries a maximum of 3PCS plates, and a maximum of 6PCS plates in series.

Connecting Cable

Cable Type	Schematic Diagram	Specification	Core	Electrical Properties
Jumper Cable - 6cm				
Jumper Cable - 30cm		Inner core: 20AWG		Red R, Green G, Blue B, White W, Black V+
Hardwire Power Cable - 30cm				

Note: The above data is based on full power in mixed colour temperature.