

# INTRODUCTION

# VAPOR TIGHT LED BATTEN LIGHT

## FEATURE

New Generation Upgrade Vapor Tight Batten Light  
 Corrosion Resistant, Waterproof and Dustproof  
 Easy Installation and Maintenance Freely  
 Color Rendering Index Ra≥80 (SCDM 3-Step)  
 Long Lifespan >50,000hours  
 Working Temperature -30℃~50℃

## MATERIAL & FINISH

LED Brand: GUBO [LM80]  
 Internal Flicker-free Driver Brand: GUBO  
 Housing: Flame Retardant PC Housing  
 Diffuser: Opal Stripe PC Diffuser  
 Clips: Stainless Steel SUS304.

## INSTALLATION

Surface Mounted or Suspended  
 Widely Application for Parking Lot, Workshop,  
 Warehouse, Supermarket, Office, Food Factory.....

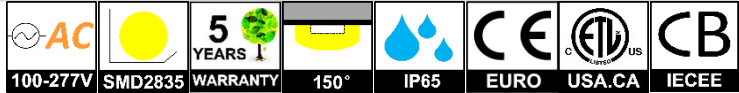
## STANDARD

Designed and Manufactured to Comply with  
 CE/ROHS/EMF/GS/CB/cETL/SAASASO Standard  
 Withstand Voltage: 3.75KV, Surge Protection(L-N): 1KV  
 IP65 and IK08 Protection, Class II & I Electrical

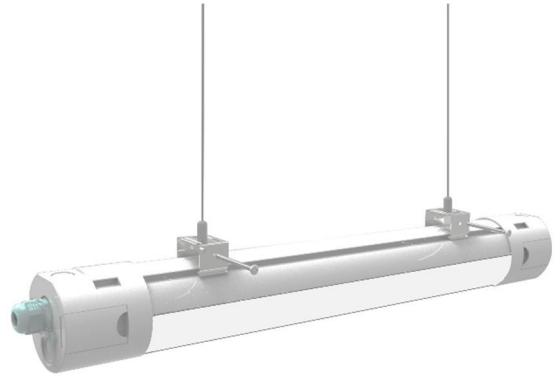
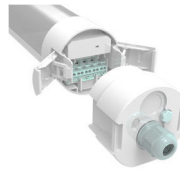
## OPTION

LED CCT: 2000K/2700K/3500K/5700K/R/G/B/A  
 LED Color: Red, Green, Blue, Amber  
 Personal Eye Protection Standard: RG0 (EN166:2001)  
 [CRI]: RA80, [G] RA90, [H] RA95  
 [CBE] Emergency Version: 9W 90minutes  
 External Emergency Switch & Indicator  
 [CSMD]: Dimming Microwave Motion Sensor

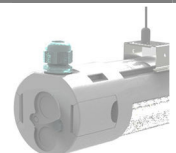
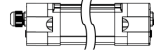
- Detection Zone: D8xH8meters
- Hold Time: 5s/30s/60s/5min/10min/15min/30min
- Standby Dimming Level: 10%-20%-30%
- Standby Period: Always or 0/1/3/5/10/30min
- Daylight Sensor: Disable or 5/10/25/50/100 Lux



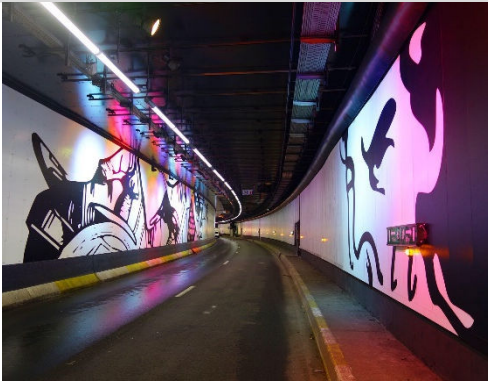
## JUNCTION BOX



STANDARD 1xCONNECTOR	[ACS] Version 2xCONNECTOR	[ACY] Version YxCONNECTOR	[ACL] Version BACK OUTLET
-------------------------	------------------------------	------------------------------	------------------------------

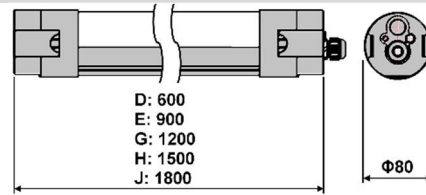


## CASE STUDY:



## DIMENSION: [UNIT: MM]

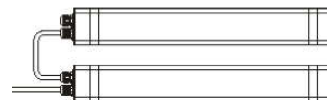
### STANDALONE



### [ACS] SERIAL CONNECTION



### [ACY] Y-TYPE CONNECTION



MODEL	POWER [W]	LED TYPE	CCT [K]	CRI	LUMEN [LM]	POWER FACTOR	BEAM ANGLE	OPTIONAL DIMMING	INPUT [V]
GTE3116D-20W-3000K	20W	120x0.5W SMD2835	3000K	RA80	2630	>0.9	150°	[CDT]:TRIAC(10%) [CDV]:0/1~10V(8%) [CDV0]:0~10V(1%) [CDV1]:1~10V(15%) [CDX]:DMX512(1%) [CDA]:DALI(1%) [CDP]:PWM(1%)	AC220~240V [AC100~240V] [AC100~277V] [AC100~347V] 50/60Hz [DC24V]
GTE3116D-20W-4000K			4000K	RA80	2760				
GTE3116D-20W-6500K			6500K	RA80	2760				
GTE3116D-20W-TW	2C@20W	48TW	2700K	6500K	RA80	2070	>0.9		
GTE3116D-20W-RGBW	4C@20W	48RGBW	R	G	B	W	RA80	2070	>0.5
GTE3116E-30W-3000K	30W	168x0.5W SMD2835	3000K	RA80	3950	>0.9	150°	[CDT]:TRIAC(10%) [CDV]:0/1~10V(8%) [CDV0]:0~10V(1%) [CDV1]:1~10V(15%) [CDX]:DMX512(1%) [CDA]:DALI(1%) [CDP]:PWM(1%)	AC220~240V [AC100~240V] [AC100~277V] [AC100~347V] 50/60Hz [DC24V]
GTE3116E-30W-4000K			4000K	RA80	4140				
GTE3116E-30W-6500K			6500K	RA80	4140				
GTE3116E-30W-TW	2C@30W	72TW	2700K	6500K	RA80	2800	>0.9		
GTE3116E-30W-RGBW	4C@30W	72RGBW	R	G	B	W	RA80	2800	>0.6
GTE3116G-40W-3000K	40W	240x0.5W SMD2835	3000K	RA80	5260	>0.9	150°	[CDT]:TRIAC(10%) [CDV]:0/1~10V(8%) [CDV0]:0~10V(1%) [CDV1]:1~10V(15%) [CDX]:DMX512(1%) [CDA]:DALI(1%) [CDP]:PWM(1%)	AC220~240V [AC100~240V] [AC100~277V] [AC100~347V] 50/60Hz [DC24V]
GTE3116G-40W-4000K			4000K	RA80	5510				
GTE3116G-40W-6500K			6500K	RA80	5510				
GTE3116G-50W-3000K	50W	240x0.5W SMD2835	3000K	RA80	6310	>0.9	150°	[CDT]:TRIAC(10%) [CDV]:0/1~10V(8%) [CDV0]:0~10V(1%) [CDV1]:1~10V(15%) [CDX]:DMX512(1%) [CDA]:DALI(1%) [CDP]:PWM(1%)	AC220~240V [AC100~240V] [AC100~277V] [AC100~347V] 50/60Hz [DC24V]
GTE3116G-50W-4000K			4000K	RA80	6620				
GTE3116G-50W-6500K			6500K	RA80	6620				
GTE3116G-50W-TW	2C@50W	96TW	2700K	6500K	RA80	5180	>0.9		
GTE3116G-50W-RGBW	4C@50W	96RGBW	R	G	B	W	RA80	5180	>0.6
GTE3116H-50W-3000K	50W	288x0.5W SMD2835	3000K	RA80	6310	>0.9	150°	[CDT]:TRIAC(10%) [CDV]:0/1~10V(8%) [CDV0]:0~10V(1%) [CDV1]:1~10V(15%) [CDX]:DMX512(1%) [CDA]:DALI(1%) [CDP]:PWM(1%)	AC220~240V [AC100~240V] [AC100~277V] [AC100~347V] 50/60Hz [DC24V]
GTE3116H-50W-4000K			4000K	RA80	6620				
GTE3116H-50W-6500K			6500K	RA80	6620				
GTE3116H-60W-3000K	60W	288x0.5W SMD2835	3000K	RA80	7890	>0.9	150°	[CDT]:TRIAC(10%) [CDV]:0/1~10V(8%) [CDV0]:0~10V(1%) [CDV1]:1~10V(15%) [CDX]:DMX512(1%) [CDA]:DALI(1%) [CDP]:PWM(1%)	AC220~240V [AC100~240V] [AC100~277V] [AC100~347V] 50/60Hz [DC24V]
GTE3116H-60W-4000K			4000K	RA80	8260				
GTE3116H-60W-6500K			6500K	RA80	8260				
GTE3116H-60W-TW	2C@60W	120TW	2700K	6500K	RA80	6220	>0.9		
GTE3116H-60W-RGBW	4C@60W	120RGBW	R	G	B	W	RA80	6220	>0.6
GTE3116J-60W-3000K	60W	336x0.5W SMD2835	3000K	RA80	7890	>0.9	150°	[CDT]:TRIAC(10%) [CDV]:0/1~10V(8%) [CDV0]:0~10V(1%) [CDV1]:1~10V(15%) [CDX]:DMX512(1%) [CDA]:DALI(1%) [CDP]:PWM(1%)	AC220~240V [AC100~240V] [AC100~277V] [AC100~347V] 50/60Hz [DC24V]
GTE3116J-60W-4000K			4000K	RA80	8260				
GTE3116J-60W-6500K			6500K	RA80	8260				
GTE3116J-80W-3000K	80W	336x0.5W SMD2835	3000K	RA80	10520	>0.9	150°	[CDT]:TRIAC(10%) [CDV]:0/1~10V(8%) [CDV0]:0~10V(1%) [CDV1]:1~10V(15%) [CDX]:DMX512(1%) [CDA]:DALI(1%) [CDP]:PWM(1%)	AC220~240V [AC100~240V] [AC100~277V] [AC100~347V] 50/60Hz [DC24V]
GTE3116J-80W-4000K			4000K	RA80	11030				
GTE3116J-80W-6500K			6500K	RA80	11030				
GTE3116J-80W-TW	2C@80W	144TW	2700K	6500K	RA80	8290	>0.9		
GTE3116J-80W-RGBW	4C@80W	144RGBW	R	G	B	W	RA80	8290	>0.6

## NOTE:

All parameters are measured at 25℃ ambient temperature, 35% humidity experimental environment.  
 Tolerances of power and luminous flux are ±10%, tolerance of color rendering index is ±5.