

NIKLAS W

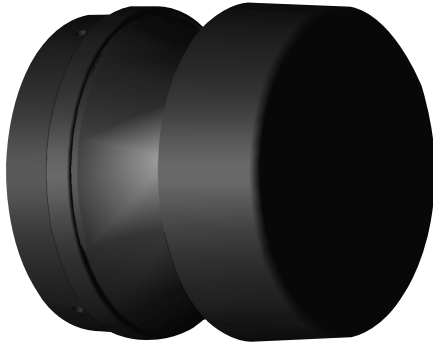
EasyLED Deck/Wall Light

L70
25°C

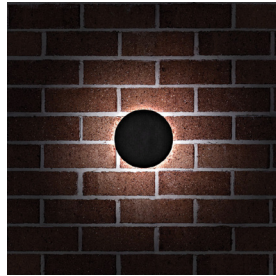
147,000 Hours



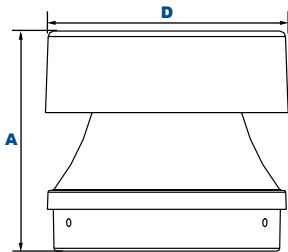
NIKLAS W
Shown with 180° Shield



NIKLAS W
Side View



NIKLAS W
Shown Mounted



Dimensions

| | |
|--------------|----------------|
| Diameter (D) | 4 3/4" (120mm) |
| Height (A) | 4 5/8" (117mm) |

The NIKLAS W Deck/Wall mount luminaries provide full cutoff lighting for outdoor path, walkways and landscape areas using wide spread optics designed to replace outdated Halogen and Compact Fluorescent lighting systems. When mounted on walls between 8 to 20 feet the fixture provides accent wall wash pattern illumination. These fixtures are ideal for landscaped areas at retail centers, restaurants, hotels, schools and universities, office buildings and medical facilities.

Specifications and Features:

Housing:

Die Cast Aluminum Housing with 1/2" NPS Coin Plug on Bottom, Sealed Driver Compartment. 360° Distribution, or 120° or 180° Shield.

Listing & Ratings:

ETL: Listed for Wet Locations, ANSI/UL 1598, 8750; IP66 Sealed LED Compartment.

Finish:

Textured Architectural Bronze or Black Powdercoat Finish Over a Chromate Conversion Coating. Custom Colors Available Upon Request.

Lens:

Clear UV-Stabilized Polycarbonate Vandal-Resistant Lens

Mounting Options:

Mount Over a 4" Recessed Outlet Box.

EasyLED LED:

Aluminum Boards

Wattage:

360° Arrays: 12w & 16.6w, System: 12.9w & 18.9w
180° & 120° Arrays: 10w & 15.5w, System: 11.2w & 17w; (70w HID Equivalent)

Driver:

Electronic Driver, 120-277V, 50/60Hz; Less Than 20% THD and PF>0.90. Standard Internal Surge Protection 2kV. 0-10V Dimming Standard for a Dimming Range of 100% to 10%; Dimming Source Current is 150 Microamps.

Warranty:

5-Year Warranty for -40°C to +50°C Environment.

See Page 2 for Projected Lumen Maintenance Table.

Project Information:

| | |
|---------------------|---------------|
| Project Name: | Fixture Type: |
| Complete Catalog #: | Date: |
| Comments: | |

Certification & Listings:

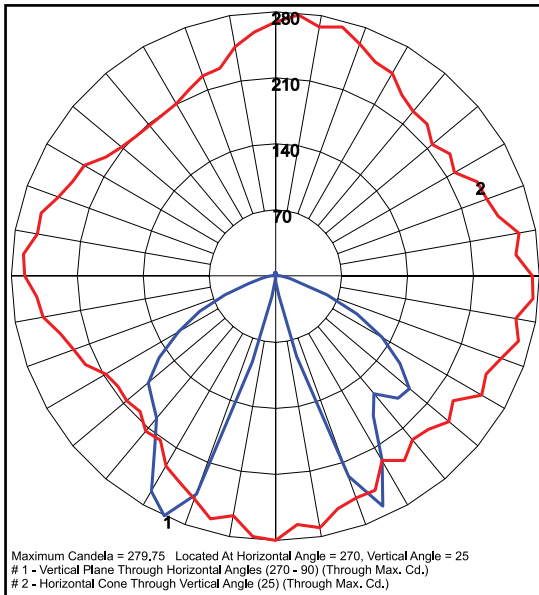


Order Information Example:

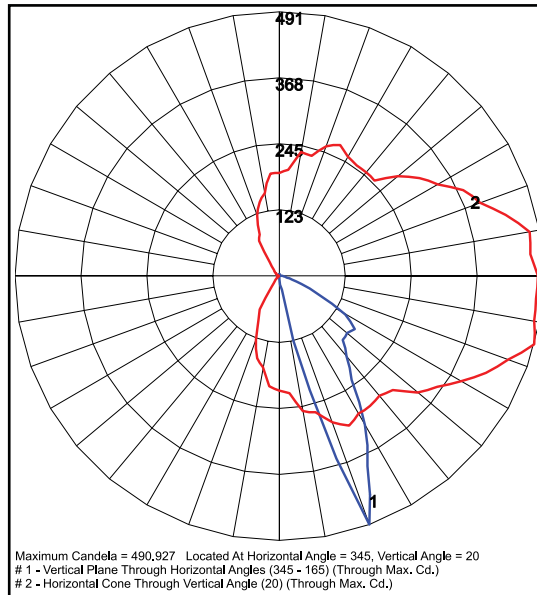
NIKLAS W-1X17-U-4K-C-Z

| | U | | C | |
|--|------------|--|---|---|
| Model | Driver | CCT | Lens | Color |
| NIKLAS W-1X12 =Deck/Wall Mount - 360°, 12w NIKLAS W-1X17 =Deck/Wall Mount - 360°, 17w NIKLAS W2-1X16 =Deck/Wall Mount with 120° Shield, 16w NIKLAS W3-1X10 =Deck/Wall Mount with 180° Shield, 10w NIKLAS W3-1X16 =Deck/Wall Mount with 180° Shield, 16w | U=120-277V | 3K =3000K 4K =4000K 5K =5000K | C =Clear UV-Stabilized Polycarbonate Vandal-Resistant Lens | Z =Bronze B =Black C =Custom (Consult Factory) |

Photometric Data



NIKLAS W-1X17-U-4K-C Clear Lens, Type V



NIKLAS W3-1X16-U-4K-C Clear Lens, Type I

Photometric Performance

| Optic | Wattage (Catalog Logic) | | |
|------------------------------------|-------------------------|------------------|------------|
| | Input Watts | 12W (1X12) | 17W (1X17) |
| | CCT | Delivered Lumens | |
| 360° DW50 Models F=Type V Optic | 3000K | 479 | 671 |
| | 4000K | 520 | 728 |
| | 5000K | 541 | 758 |
| | BUG Rating | B0-U1-G0 | B1-U2-G0 |

| Optic | Wattage (Catalog Logic) | | |
|------------------------------------|-------------------------|------------------|------------|
| | Input Watts | 10W (1X10) | 16W (1X16) |
| | CCT | Delivered Lumens | |
| 180° DW5H Models F=Type V Optic | 3000K | 338 | 508 |
| | 4000K | 352 | 528 |
| | 5000K | 366 | 549 |
| | BUG Rating | B0-U1-G0 | B0-U1-G0 |

Projected Lumen Maintenance

| Data shown for 4000 CCT | | | Compare to MH | | | |
|--------------------------------------|--------------------------------------|---------|---------------|------------|-------------|---------------------|
| TM-21-11 | Input Watts | Initial | 25,000 Hrs | 50,000 Hrs | 100,000 Hrs | Calculated LED Life |
| L70 Lumen Maintenance @ 25°C / 77°F | All wattages up to and including 19w | 1.00 | 0.95 | 0.90 | 0.80 | 147,000 |
| L70 Lumen Maintenance @ 50°C / 122°F | | 1.00 | 0.89 | 0.78 | 0.55 | 67,000 |
| L80 Lumen Maintenance @ 40°C / 104°F | | 1.00 | 0.92 | 0.85 | 0.70 | 66,000 |

NOTES:

- Projected per IESNA TM-21-11. Data references the extrapolated performance projections for the base model in a 25°C ambient, based on 10,000 hours of LED testing per IESNA LM-80-08.
- Compare to MH box indicates suggested Light Loss Factor (LLF) to be used when comparing to Metal Halide (MH) systems.