

INTRODUCTION

GTG5142A-MRH: LED GARDEN LIGHT

FEATURE

Perfect Luminaires for Driveways and Footpaths
 Pleasantly Uniform Light Effects
 Suitable for Areas Without Risk of Vandalism
 Long Lifespan >50,000hours
 Working Temperature: -30°C~50°C

MAIN MATERIAL

LED Brand: GUBO
 Driver Brand: GUBO
 Housing: Aluminum Profile
[BDF] Optics: Forste Glass Diffuser
[LENS] Optics: Lens with Clear Glass Diffuser

INSTALLATION

Suitable for Garden, Park, Plaza.....

- [FFS]**: Flush Surface Mounted
- [FPS]**: Stem Pendant
- [FWA]**: Wall Surface Mounted
- [FSC]**: Slip Fitter Mounted
- [FJP]**: Fixing Plate on JBOX/Outlet Box
- [PSA]**: Aluminum Straight Bollard

NOTES: Custom Installation and Accessories
 Referred to Another Catalogue of Fixing Kits.

STANDARD

Designed and Manufactured to Comply with
 CE/RoHS/TUV/CB/cETL/SAA Standard

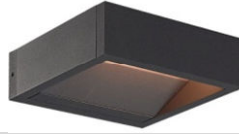
IP65 Protection, Class I Electric

CUSTOM OPTION

LED CCT: 1,600K~10,000K/R/G/B/Y
[CRI]: [E] RA80, [G] RA90, [H] RA97(RG0)
 Working Temperature[M40C]: -40°C~50°C
[HF1]: Custom Housing Finish Colors by RAL Code

WHITE RAL9010P	BLACK RAL9005P	DARK GREY RAL7016P	GREY RAL7043P	PEARL GREY RAL9022P
-------------------	-------------------	-----------------------	------------------	------------------------

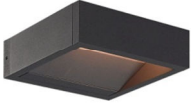
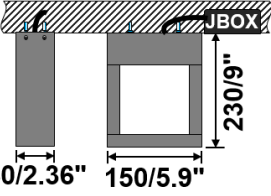

[FFS] (MRH150A)			[PSA] Bollard (MRH200A)		[PSA] Bollard (MRH150A)		


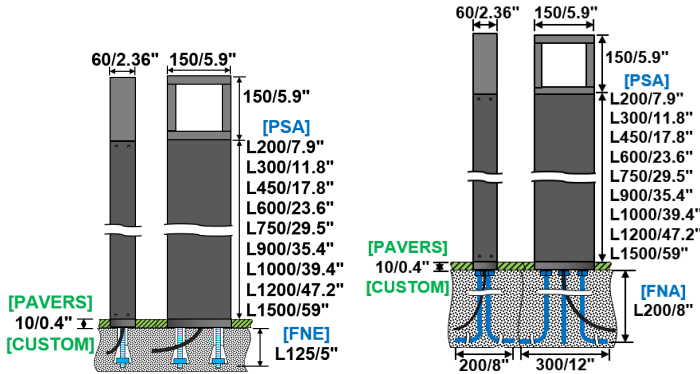
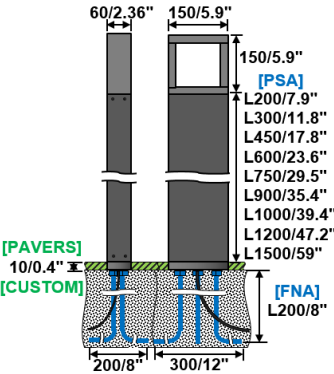





MODEL	POWER [W]	LED TYPE	CCT [K]	CRI	FLUX [LM]	POWER FACTOR	BEAM ANGLE	CUSTOM DIMMING	INPUT [V]
GTG5142A-MRH150A1N	20W [15W] [12W]	72x0.5W SMD2835	G2700K	RA90	1280	>0.9	[BDF] 120°	Remote Driver [Inside Bollard] [CDN]:Non-dimmable [CDT]:TRIAC(10%) [CDV]:0/1~10V(8%) [CDV0]:0~10V(1%) [CDV1]:1~10V(10%) [CDA]:DALI(1%) [+CDP]:PWM(1%) [+CDX]:DMX512(1%) [+CDS]:SPI(1%)	AC100~277V [AC100~240V] [AC100~347V] 50/60Hz
			G3000K	RA90	1360				
			G3500K	RA90	1360				
			G4000K	RA90	1440				
			G5000K	RA90	1440				
	2C@20W	TWG	G2700K G6500K	RA90	1280	>0.9			
4C@20W	RGBW	620nm 520nm 455nm G2700K	\	1280	>0.9				
GTG5142A-MRH200A1N	30W [20W] [12W]	144x0.5W SMD2835	G2700K	RA90	1790	>0.9	[BDF] 120°	Following [Sensor] [CSL]: Photocell Lux Sensor [CSPD]: Big-level PIR Motion Sensor [CSMD]: Big-level Microwave Motion Sensor	AC100~277V [AC100~240V] [AC100~347V] 50/60Hz
			G3000K	RA90	1910				
			G3500K	RA90	1910				
			G4000K	RA90	2020				
			G5000K	RA90	2020				
	2C@30W	TWG	G2700K G6500K	RA90	1790	>0.9			
4C@30W	RGBW	620nm 520nm 455nm G2700K	\	1790	>0.9				
GTG5142A-MRH300A1N	50W [40W] [30W] [20W]	240x0.5W SMD2835	G2700K	RA90	3070	>0.9	[BDF] 120°	Following by Remote Driver [Outside Fixture] [CRZ]:ZIGBEE(1%) [CRF]:2.4G RF(1%) [CRB]:Bluetooth(1%)	AC100~277V [AC100~240V] [AC100~347V] 50/60Hz
			G3000K	RA90	3260				
			G3500K	RA90	3260				
			G4000K	RA90	3460				
			G5000K	RA90	3460				
	2C@50W	TWG	G2700K G6500K	RA90	3070	>0.9			
4C@50W	RGBW	620nm 520nm 455nm G2700K	\	3070	>0.9				
GTG5142A-MRH150A2B	20W [15W] [12W]	18x2W SMD3030	G2700K	RA90	1010	>0.9	[LENS] BL15D:15° BL25D:25° BL30D:30° BL45D:45° BL60D:60° BL90D:90° BL120D:120°	Following by Remote Driver [Outside Fixture] [CRZ]:ZIGBEE(1%) [CRF]:2.4G RF(1%) [CRB]:Bluetooth(1%)	AC100~277V [AC100~240V] [AC100~347V] 50/60Hz
			G3000K	RA90	1100				
			G3500K	RA90	1100				
			G4000K	RA90	1170				
			G5000K	RA90	1170				
	2C@20W	TWG	G2700K G6500K	RA90	800	>0.9			
4C@20W	RGBW	620nm 520nm 455nm G2700K	\	800	>0.9				
GTG5142A-MRH200A2B	30W [20W] [12W]	36x2W SMD3030	G2700K	RA90	1420	>0.9	[LENS] BL15D:15° BL25D:25° BL30D:30° BL45D:45° BL60D:60° BL90D:90° BL120D:120°	Following by Remote Driver [Outside Fixture] [CRZ]:ZIGBEE(1%) [CRF]:2.4G RF(1%) [CRB]:Bluetooth(1%)	AC100~277V [AC100~240V] [AC100~347V] 50/60Hz
			G3000K	RA90	1530				
			G3500K	RA90	1530				
			G4000K	RA90	1640				
			G5000K	RA90	1640				
	2C@30W	TWG	G2700K G6500K	RA90	1200	>0.9			
4C@30W	RGBW	620nm 520nm 455nm G2700K	\	1200	>0.9				
GTG5142A-MRH300A2B	50W [40W] [30W] [20W]	72x2W SMD3030	G2700K	RA90	2430	>0.9	[LENS] BL15D:15° BL25D:25° BL30D:30° BL45D:45° BL60D:60° BL90D:90° BL120D:120°	Following by Remote Driver [Outside Fixture] [CRZ]:ZIGBEE(1%) [CRF]:2.4G RF(1%) [CRB]:Bluetooth(1%)	AC100~277V [AC100~240V] [AC100~347V] 50/60Hz
			G3000K	RA90	2630				
			G3500K	RA90	2630				
			G4000K	RA90	2810				
			G5000K	RA90	2810				
	2C@50W	TWG	G2700K G6500K	RA90	1950	>0.9			
4C@50W	RGBW	620nm 520nm 455nm G2700K	\	1950	>0.9				

NOTE:

All parameters are measured at 25°C ambient temperature, 35% humidity experimental environment.
 Tolerances of power and luminous flux are ±10%, tolerance of color rendering index is ±5.

[FFS]: Flush Surface Mounted Light		DIMENSION:[UNIT: MM]	
NOTES:	[BGG] Customs Grille with Engraved Pattern		
NOTES:	Custom Installation and Accessories Referred to Another Catalogue of Fixing Kits.		
(MRH150A)	[FFS]-[FJP]	[FFS]-[FNA]	CASE STUDY:
	 <p>60/2.36" 150/5.9" 184/7.3"</p>	 <p>60/2.36" 150/5.9" 230/9"</p>	
(MRH200A)	[FFS]-[FJP]	[FFS]-[FNA]	CASE STUDY:
			
(MRH300A)	[FFS]-[FJP]	[FFS]-[FNA]	CASE STUDY:
			

[PSA] Bollard Light		DIMENSION:[UNIT: MM]	
NOTES:	[BGG] Customs Grille with Engraved Pattern		
NOTES:	Custom Installation and Accessories Referred to Another Catalogue of Fixing Kits.		
(MRH150A)	[PSA]-[FNE]	[PSA]-[FNA]	CASE STUDY:
			
(MRH200A)	[PSA]-[FNE]	[PSA]-[FNA]	CASE STUDY:
			
(MRH300A)	[PSA]-[FNE]	[PSA]-[FNA]	CASE STUDY:
