



Item No.

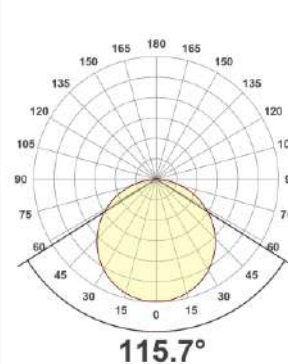
CIP-2835-N-P-12x12mm-5/10w-120-24-W/R/G/B/A/P
 4040 5/10w 96 RGB

Color Option
 LED Qty
 Power Option
 LED Type

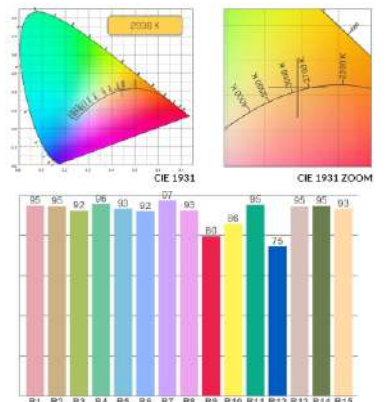
Description

Simply divide into two categories - horizontal & vertical bending
 40mm-300mm bending radius. R/G/B/W/ multiple color
 and digital colors. Standard 24VDC, 12VDC option. The material
 of housing and body are made by silicone material which is special
 designed used in harsh environment. Various shapes (flat, dome or
 rounded surfaces) are available in this series, and they are also
 waterproof (Ip67), ideal for lighting up interior and exterior.

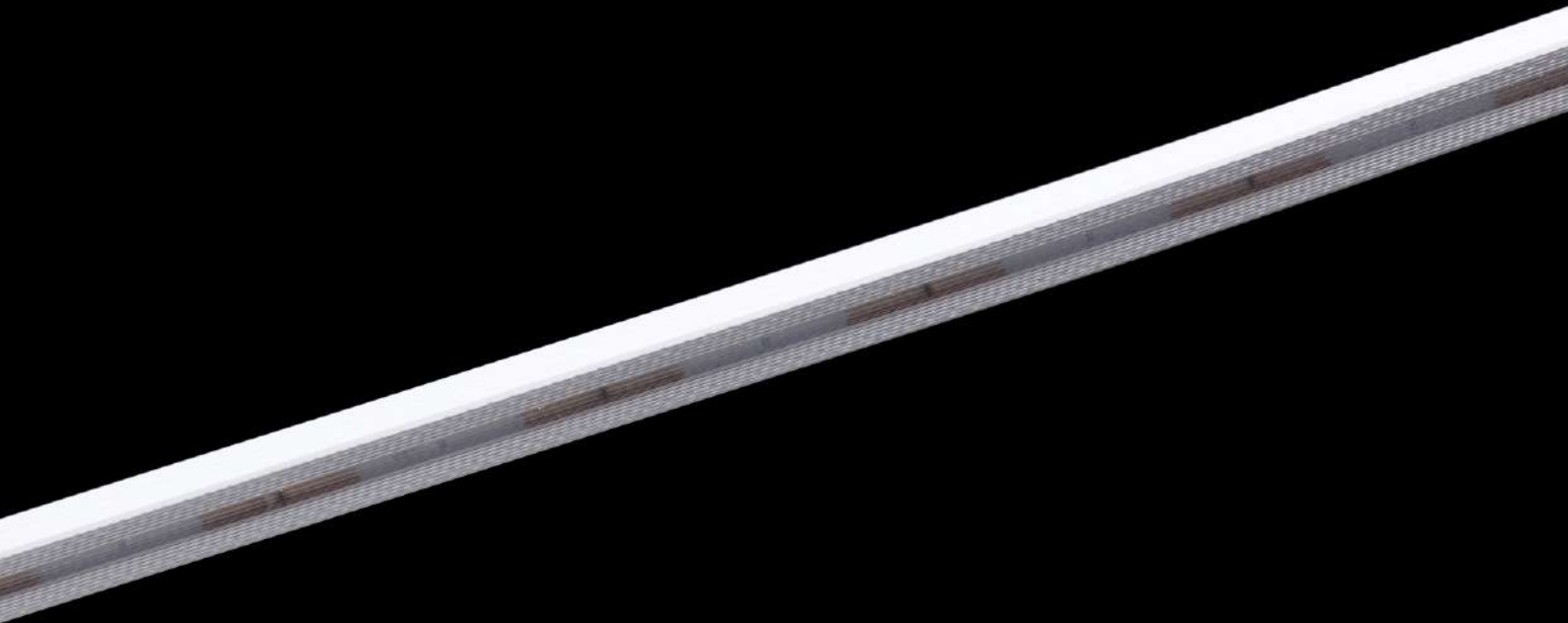
Beam angle



Colour details



CIP-2835NP-12x12mm10W-12024-30K



LIGHT COLOR MODE

Cool White

6000K

Natural White

4000K

Warm White

2100K/2400K/2700K/3000K



Red



Green



Blue



Amber



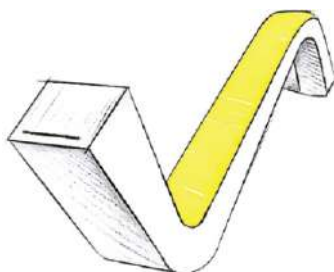
tunable
White



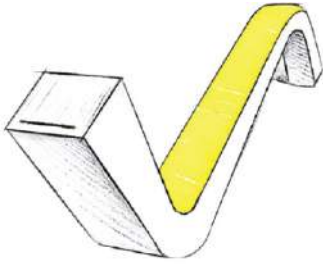
RGB+W



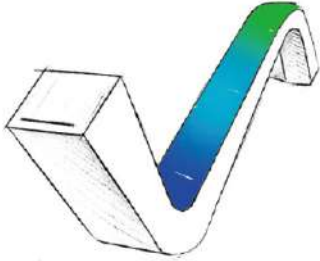
RGB



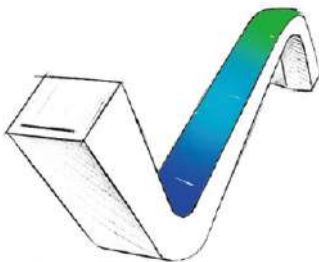
Model:	CIP-2835NP-12x12mm5W-12024-W	Color & Output
Input voltage:	DC24V	<ul style="list-style-type: none"> ● 2100K 290LM/M ● 2400K 290LM/M
Power/m:	5W	<ul style="list-style-type: none"> ● 2700K 350LM/M ● 3000K 330LM/M
LED Type:	EPISTAR SMD2835	<ul style="list-style-type: none"> ● 3500K 355LM/M ● 4000K 350LM/M
LED Qty / meter:	120LEDs	<ul style="list-style-type: none"> ● 5000K 347LM/M ● 6000K 336LM/M
Working Mode:	PWM CV/CC	<ul style="list-style-type: none"> ● Red 132LM/M ● Green 374LM/M ● Blue 70LM/M
Max Length:	CV 10m; CC 19m	
Cut Length:	50mm	



Model:	CIP-2835NP-12x12mm10W-12024-W	Color & Output
Input voltage:	DC24V	<ul style="list-style-type: none"> ● 2100K 560LM/M ● 2400K 562LM/M
Power/m:	10W	<ul style="list-style-type: none"> ● 2700K 668LM/M ● 3000K 638LM/M
LED Type:	EPISTAR SMD2835	<ul style="list-style-type: none"> ● 3500K 661LM/M ● 4000K 677LM/M
LED Qty / meter:	120LEDs	<ul style="list-style-type: none"> ● 5000K 682LM/M ● 6000K 662LM/M
Working Mode:	PWM CV/CC	<ul style="list-style-type: none"> ● Red 277LM/M ● Green 703LM/M
Max Length:	CV 10m; CC 13m	<ul style="list-style-type: none"> ● Blue 129LM/M
Cut Length:	50mm	



Model:	CIP-4040NP-12x12mm5W-9624-RGB	Color & Output
Input voltage:	DC24V	●● RGB 34LM/M
Power/m:	5W	●● RGB 111LM/M
LED Type:	SMD4040	●● RGB 20LM/M
LED Qty / meter:	96LEDs	●● RGB 174LM/M
Working Mode:	PWM	
Max Length:	CV 5m	
Cut Length:	62.5mm	



Model:	CIP-4040NP-12x12mm10W-9624-RGB	Color & Output
Input voltage:	DC24V	●● RGB 69LM/M
Power/m:	10W	●● RGB 215LM/M
LED Type:	SMD4040	●● RGB 40LM/M
LED Qty / meter:	96LEDs	●● RGB 286LM/M
Working Mode:	PWM	
Max Length:	CV 5m	
Cut Length:	62.5mm	



ACCESSORIES (CONNECTORS)



Front cable enter

-F



Side cable enter

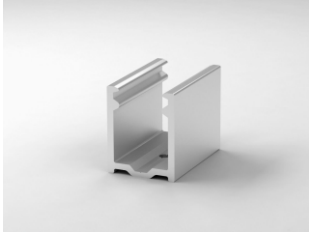
-S



Bottom cable enter

-B

PROFILES (FIXTURES)



-SS

Stainless steel clips
20x12.8x10.9mm



-AL

Aluminimu profile
1000x12.8x10.9mm



-SUS

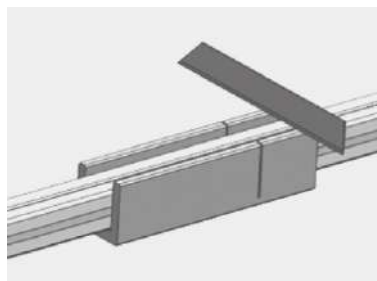
Suspension wire



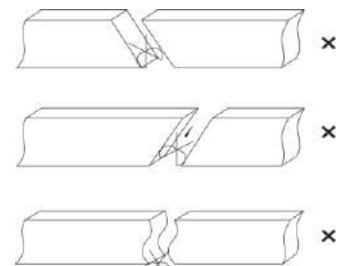
END CAP -EC



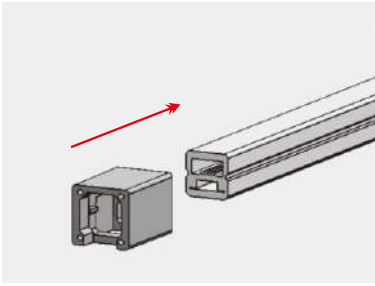
The bottom of LED strip has transparent window, the black marker is the cutting position



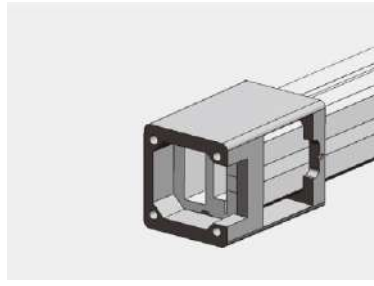
Use a cutting jig, vertical cutting precisely in the exact cutting position of led strip



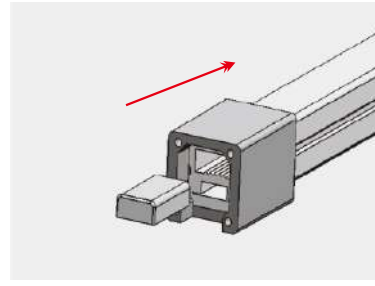
Please don't be free to cut and cut into an oblique angle or cambered section



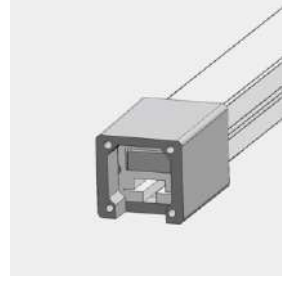
Insert the shell into the strip, insert into the limit



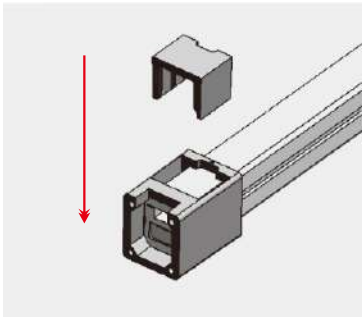
Its window is at the bottom of the LED strip



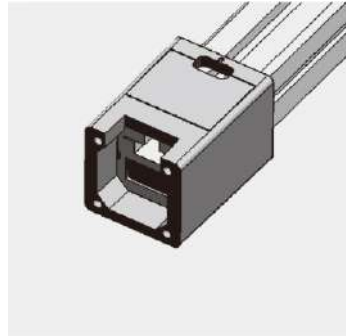
Stuff the plug into the holes corresponding of led strip



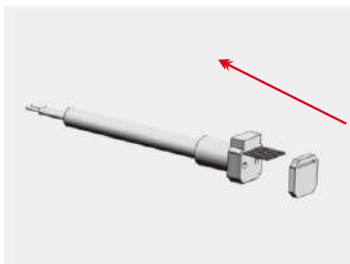
Effect diagram of the finished assembly



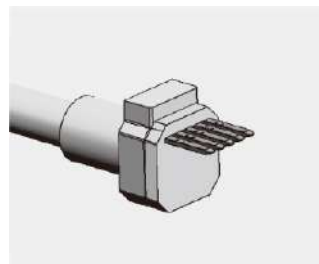
Insert the stopper into the PC shell



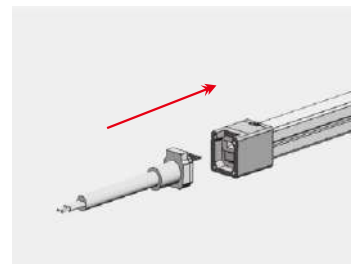
Effect diagram of the stopper assembly completed



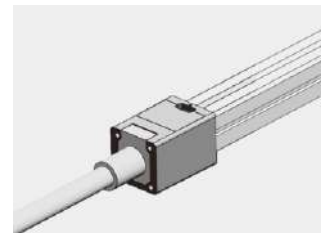
Put the water proof washer into the plug



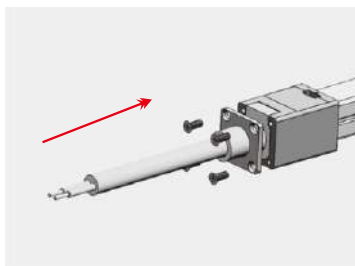
Effect diagram of the waterproof washer assembly completed



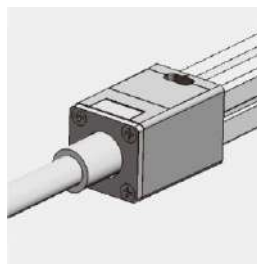
Insert the plug with the washer into the led strip. and the pin insert between FPC and transparent PET



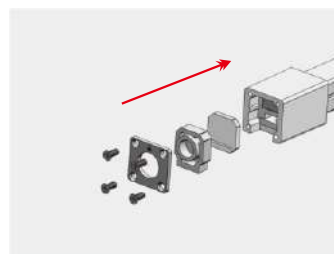
Effect diagram of the plug finished assembly completed



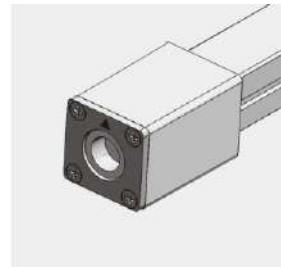
Fix the hard ware on Shell with screws, close to the shell, completed assembly



Effect diagram of the metal plate assembly completed



End cap's installation diagram



Effect diagram of the metal plate assembly completed