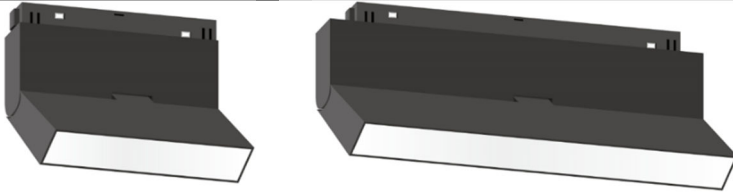


Tolerances of power and luminous flux are ±10%, tolerance of color rendering index is ±3.

W20 MAGNETIC TRACK LED FLOODLIGHT

(LS6)				(LS12)			



INTRODUCTION

FEATURE

- Uniform Linear Lighting
- Long Lifespan Design >50,000Hours
- Working Temperature: -20°C~40°C

MAIN MATERIAL

- LED BRAND: GUBO
- LED Driver Brand: GUBO
- Housing: Die-casted Aluminum
- Optics: High Efficiency PMMA Lens

INSTALLATION

- W20 Magnetic Track Slotted
- Suitable for Interior Lighting

STANDARD

- Designed and Manufactured to Comply with CE/RoHS/EMF/TUV/SAA/Erp/cETL/FCC
- IP20 Protection, Class III Electric

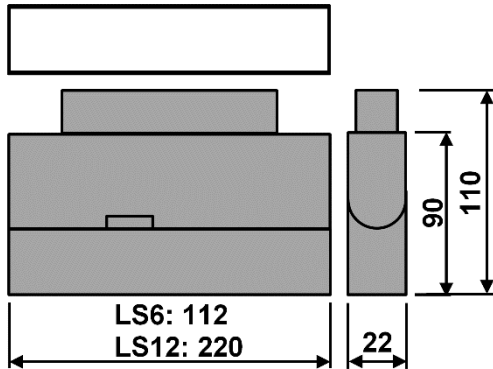
OPTION

- LED CCT: 1,800K~10,000K/R/G/B/Y
- [CRI]: Ra80, [G] Ra90, [H] RA97
- Custom Housing Finished Color:

Custom Housing Finished Color:

MATT WHITE [HMWT]	MATT BLACK [HMBK]
-------------------	-------------------

DIMENSION: [UNIT: MM]



CASE STUDY:



MODEL	POWER [W]	LED TYPE	CCT [K]	CRI	FLUX [LM]	POWER FACTOR	BEAM ANGLE	REMOTE CONTROL	INPUT [V]
GTR4423C-LS6	6W	6x2W SMD3030	G2700K	RA90	480	>0.5	BDF: 120°	[CDP]:PWM(1%) [REMOTE DRIVER] [CDT]:TRIAC(10%) [CDV]:0~10V(8%) [CDV0]:0~10V(1%) [CDV1]:1~10V(10%) [CDX]:DMX512(1%) [CDA]:DALI(1%) [CDZ]:ZIGBEE(1%) [CRF]:2.4GRF(1%)	DC24V [DC48V] [REMOTE DRIVER] AC220~240V [AC100~240V] [AC100~277V] [AC100~347V] 50/60Hz
			G3000K	RA90	540				
			G3500K	RA90	540				
			G4000K	RA90	570				
			G5000K	RA90	570				
			G6000K	RA90	540				
			H2700K	RA97	390				
			H3000K	RA97	420				
			H3500K	RA97	420				
			H4000K	RA97	450				
			H5000K	RA97	450				
			H6000K	RA97	420				
		2C@6W	6TGW	G2700K G6000K	RA90	390	>0.5		
GTR4423C-LS12	12W	12x2W SMD3030	G2700K	RA90	960	>0.5	BDF: 120°	[CDP]:PWM(1%) [REMOTE DRIVER] [CDT]:TRIAC(10%) [CDV]:0~10V(8%) [CDV0]:0~10V(1%) [CDV1]:1~10V(10%) [CDX]:DMX512(1%) [CDA]:DALI(1%) [CDZ]:ZIGBEE(1%) [CRF]:2.4GRF(1%)	DC24V [DC48V] [REMOTE DRIVER] AC220~240V [AC100~240V] [AC100~277V] [AC100~347V] 50/60Hz
			G3000K	RA90	1080				
			G3500K	RA90	1080				
			G4000K	RA90	1140				
			G5000K	RA90	1140				
			G6000K	RA90	1080				
			H2700K	RA97	780				
			H3000K	RA97	840				
			H3500K	RA97	840				
			H4000K	RA97	900				
			H5000K	RA97	900				
			H6000K	RA97	840				
		2C@12W	12TGW	G2700K G6000K	RA90	780	>0.5		

NOTE:

All parameters are measured at 25°C ambient temperature, 35% humidity experimental environment.

CIP Lighting

T: 1-803-766-0243 W: www.ciplighting.com E: info@ciplighting.com