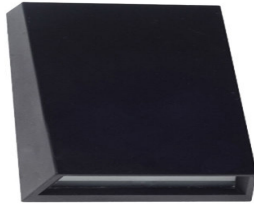
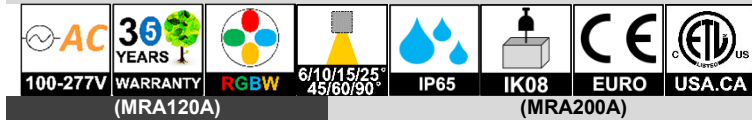
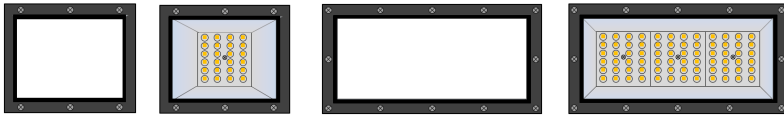


**GTG3131E: LED WALL LIGHT**

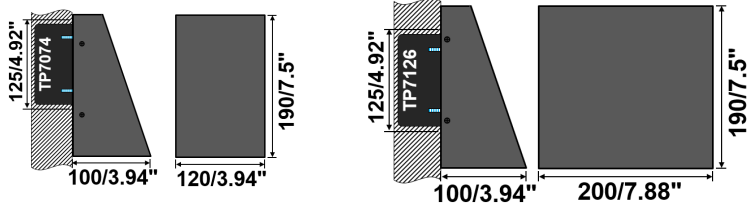


(MRA120A) [BDM] (MRA120A2A) [LENS] (MRA200A) [BDM] (MRA200A2A) [LENS]



**DIMENSION : [UNIT: MM]**

(MRA120A) (MRA200A)



**INTRODUCTION**

**FEATURE**

Advanced LED Lighting Technology  
The Perfect Interior & Exterior Slim Lighting Fixture  
Long Lifespan >50,000hours  
Working Temperature: -30℃~50℃

**MAIN MATERIAL**

LED Brand: GUBO  
Driver Brand: GUBO  
Housing: Die-casted Aluminum Housing  
Optics: High Efficiency PMMA Lens  
Diffuser: Clear Glass Diffuser

**INSTALLATION**

Suitable for Balcony, Veranda, External Wall.....  
[FWA]: [FWA]: Wall Surface Mounted  
[FJP]: Fixing Plate on Outlet Box  
[PSA]: Aluminum Straight Bollard

**NOTES:** Custom Installation and Accessories Referred to Another Catalogue of Fixing Kits.

**STANDARD**

Designed and Manufactured to Comply with CE/RoHS/ETL/FCC/SAA

IP65 Protection, Class I Electric

**CUSTOM OPTION**

LED CCT: 1,800K~10,000K/R/G/B/Y  
[CRI]: [E] RA80, [G] RA90, [H] RA97(RG0)  
[SFH]: Custom Housing Finish by RAL Code  
[SFB]: Custom Baffle Finish by RAL Code

WHITE RAL9010P	BLACK RAL9005P	GREY RAL7042P	DARK GREY RAL7016P	BRASS RAL1024P
-------------------	-------------------	------------------	-----------------------	-------------------

**CASE STUDY:**



MODEL	POWER [W]	LED TYPE	CCT [K]	CRI	FLUX [LM]	POWER FACTOR	BEAM ANGLE	CUSTOM DIMMING	INPUT [V]
GTG3131E-MRA120A2A	30W [25W] [20W] [15W]	24x2W SMD3030	E2700K	RA80	2380	>0.9	[Symmetric] BL30D:30° BL60D:60° BL90D:90° BL120D:120° T5: 150°	[CDN]:Non-dimmable [CDT]:TRIAC(10%) [CDV]:0~10V(8%) [CDV0]:0~10V(1%) [CDV1]:1~10V(10%) [CDP]:PWM(1%)	AC100~277V [AC100~240V] [AC100~347V] 50/60Hz
			E3000K	RA80	2540				
			E3500K	RA80	2540				
			E4000K	RA80	2680				
			E5000K	RA80	2680	>0.9	[Oval] BLV60x120D BLV90x120D		
			E6500K	RA80	2640				
			G2500K	RA90	1530				
			G2700K	RA90	1910				
			G3000K	RA90	2060	>0.9	[Asymmetric] T2M:V65xH145° T3M:V80xH150° T4M:V85xH150°		
			G3500K	RA90	2060				
			G4000K	RA90	2210				
			G5000K	RA90	2210				
			G6500K	RA90	2160	>0.9			
			2C@30W	TWG	G2700K G6500K	RA90	1710	>0.9	
3C@30W	RGB	620nm 520nm 460nm	\	1710	>0.9		[CSL]: Photocell Lux Sensor		
4C@30W	RGBW	620nm 520nm 460nm G2700K	\	1710	>0.9		[CSMD]: Big-level Microwave Motion Sensor		
4C@30W	RGBA	620nm 520nm 460nm 590nm	\	1710	>0.9				
GTG3131E-MRA200A2A	60W [50W] [40W] [30W]	72x2W SMD3030	E2700K	RA80	4770	>0.9	[BDM] OPAL BDM:120°	Following by Remote Driver [Outside Fixture]	[CV DC12V] [CV DC24V] [CV DC42V]
			E3000K	RA80	5070				
			E3500K	RA80	5070				
			E4000K	RA80	5370				
			E5000K	RA80	5370	>0.9	[BGL] LOUVER LM-25%		
			E6500K	RA80	5280				
			G2500K	RA90	2260				
			G2700K	RA90	3820				
			G3000K	RA90	4120	>0.9			
			G3500K	RA90	4120				
			G4000K	RA90	4410				
			G5000K	RA90	4410				
			G6500K	RA90	4330	>0.9			
			2C@60W	TWG	G2700K G6500K	RA90	3410	>0.9	
3C@60W	RGB	620nm 520nm 460nm	\	3410	>0.9				
4C@60W	RGBW	620nm 520nm 460nm G2700K	\	3410	>0.9				
4C@60W	RGBA	620nm 520nm 460nm 590nm	\	3410	>0.9				

**NOTE:**

All parameters are measured at 25℃ ambient temperature, 35% humidity experimental environment.  
Tolerances of power and luminous flux are ±10%, tolerance of color rendering index is ±5.