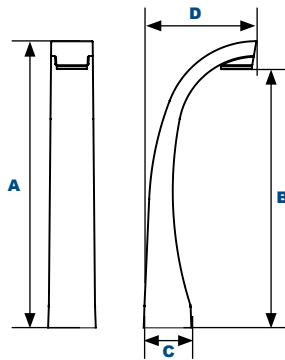


NELLI

L70
25°C

147,000 Hours

AmberLED Curve Bollard, Nautical Series



Dimensions

Height (A)	36" (915mm)
Height (B)	32 1/2" (824mm)
Base ² (C)	6" (155mm)
Width (D)	14 1/4" (362mm)

Project Information:

Project Name:	Fixture Type:
Complete Catalog #:	Date:
Comments:	

AmberLED Technology

The AmberLED NELLI Curve Bollard provides pedestrian and parking area lighting with a seaside flair. The specially designed UV-stabilized polycarbonate optics offer full-cutoff, excellently controlled uniform lighting designed for wildlife, dark skies, or security applications requiring monochromatic AMBER light. LEDs operate between 585 and 595 nm, greater than 560nm required for wildlife protection. These fixtures are ideal for a wide range of applications including parking areas, walkways and landscape accents.

Specifications and Features:

Housing:

Durable One-Piece Sand Cast Aluminum Housing Features 1/2" Thick Walls. Includes Flush Mounting Base & Vandal-Resistant Screws, Internal Driver Tray for Easy Maintenance.

Listing & Ratings:

ETL: Listed for Wet Locations, ANSI/UL 1598, 8750
IP65

Finish:

Textured Architectural Bronze or Black Powdercoat Finish Over a Chromate Conversion Coating. Custom Colors Available Upon Request.

Lens:

Clear UV-Stabilized Polycarbonate Vandal-Resistant Lens

Mounting Options:

Mounting Kit with 8" Zinc-Plated Anchor Bolts, Included.

AmberLED:

Aluminum Boards

Wattage:

17w: Array 17w, System 18.7w

Driver:

Electronic Driver, 120-277V, 50/60Hz; Less Than 20% THD and PF>0.90. Standard Internal Surge Protection 2kV. 0-10V Dimming Standard for a Dimming Range of 100% to 10%; Dimming Source Current is 150 Microamps.

Warranty:

5-Year Warranty for -40°C to +50°C Environment.

See Page 3 for Projected Lumen Maintenance Table.



AmberLED

585-595NM

Certification & Listings:



Order Information Example:

NELLI-C-1X17-U-AM-C-Z-SP

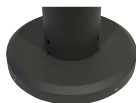
NELLI	C	1X17	U	AM	C		
Model	Optics	Wattage	Driver	CCT	Lens	Color	Options
NELLI=AmberLED Curve Bollard, Nautical Series	C=Type III	1X17=17w	U=120-277V	AM=Amber, 585-595nm	C=Clear UV-Stabilized Polycarbonate Vandal-Resistant Lens	Z=Bronze B=Black C=Custom (Consult Factory)	SF=Single Fuse DF=Double Fuse SP=Surge Protection GF1=GFCI Outlet, 15A, 120V (Side Mount Only)

Accessories & Replacement Parts:

Mounting Accessories (Order Separately, Field Installed)

BREBASE* Bollard Retrofit Base Kit Adapts New Bollards to Most Existing Bolt Patterns. Fits all LEPC Bollards. Die Cast with Powdercoat Finish, Hardware Included. 11½" Dia. x 1½" H

*Specify Color: Z=Bronze, B=Black, C=Custom (Consult Factory)



BREBASE*

*Shown Mounted

Replacement Parts (Order Separately, Field Installed)

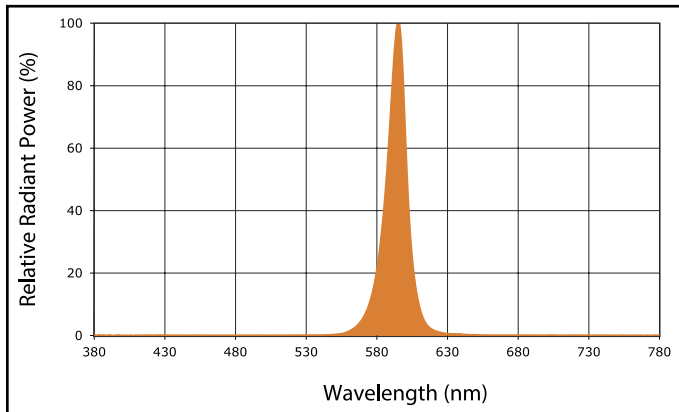
B9LFB Lens Frame, Black Finish

BOADP1 Adapter Plate with Gaskets for Outlet Boxes. Fits LEPC Round Bollards. Die Cast with Bronze Powdercoat Finish.

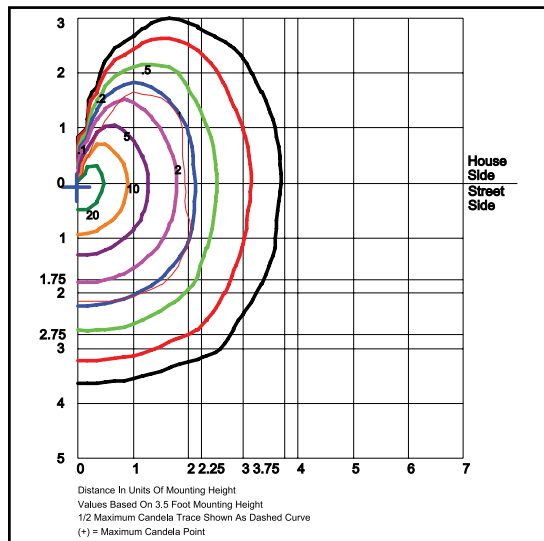


BOADP1

Spectral Chart

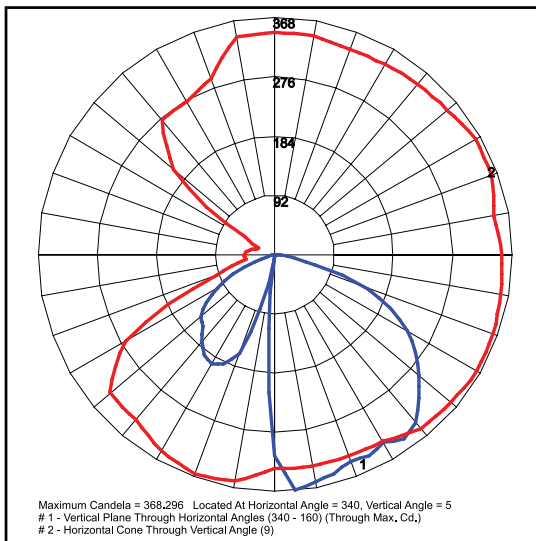


Photometric Data



NELLI-C-1X17-U-AM-C

Grid in feet, Mounting Height = 3.5 ft.



NELLI-C-1X17-U-AM-C

Grid in feet, Mounting Height = 3.5 ft.

Photometric Performance

Amber LED 588-595nm							
LED Board Watts	Input Watts	Optics	Lumens	LPW	B	U	G
AmberLED 17w	18.7w	Type III	1040	56	1	0	0

Projected Lumen Maintenance

Data shown for Amber LEDs			Compare to MH			
TM-21-11	Input Watts	Initial	25,000 Hrs	50,000 Hrs	100,000 Hrs	Calculated LED Life
L70 Lumen Maintenance @ 25°C / 77°F	18.7w	1.00	0.96	0.92	0.85	196,000
L70 Lumen Maintenance @ 50°C / 122°F		1.00	0.90	0.81	0.62	78,000
L80 Lumen Maintenance @ 40°C / 104°F		1.00	0.96	0.85	0.92	126,000

NOTES:

- Projected per IESNA TM-21-11. Data references the extrapolated performance projections for the base model in a 25°C ambient, based on 10,000 hours of LED testing per IESNA LM-80-08.
- Compare to MH box indicates suggested Light Loss Factor (LLF) to be used when comparing to Metal Halide (MH) systems.